

Corrosion-resistant IP66 polycarbonate luminaires

Highly efficient corrosion- and impact-resistant linear luminaires with an injection-moulded polycarbonate body and cover, both fire-retardant. Thorproof is a durable luminaire for tough environments, rated to IP66 and IK08.

Designed to deliver a long 100,000-hour life over an ambient temperature range of -20°C to +45°C. Smartscan and integral emergency versions are available.

Applications: plant rooms, industrial process areas, workshops, storage areas, multistorey car parks, shower rooms, and toilet blocks.

- Smooth easy-clean lines
- TM66 score of 2.6 - LIA/CIBSE certification scheme TSD-012 verified
- Secure and easy to operate cover clips (stainless steel option sold separately)
- Fast installation via-external stainless steel brackets maintains IP rating
- Factory fitted through wiring option available
- Suitable for external applications but recommended to be mounted under a canopy and not exposed to direct sunlight
- SmartScan wireless technology removes the need for control cabling. Ideal for retro-fit
- Complies with M.O.D. DSA 03.OME Part 2, Chapter 8 for 'Category C' areas (formerly JSP482)



Notes: For ambient temperatures below the stated minimum contact the Thorlux Technical department

IP66

IK08

Up to 167.9 LL/CW

SMARTSCAN

LUXGUARD

TM66 circularity score 2.6

Specification

Mounting	Surface	IP rating	IP66
Impact rating	IK08	Nominal size	600 mm 1200 mm 1500 mm

Sustainability

TM66 circularity score	2.6
------------------------	-----

Lighting

Optic	Opal cover	Lumen output	1,880 lm - 9,255 lm
Efficacy	Up to 167.9 LL/CW		

Emergency data

Emergency lumen output	330 lm - 735 lm	Emergency type	Maintained
Emergency duration	3 hours	Battery specification	Lithium Iron Phosphate (LiFePO4)

Power

LED power	10 W - 49 W	Circuit power	14 W - 56 W
-----------	-------------	---------------	-------------

Construction

Housing	Injection moulded fire-retardant polycarbonate body	Body colour	Light Grey
Optical assembly	Fire-retardant polycarbonate cover		

LED characteristics

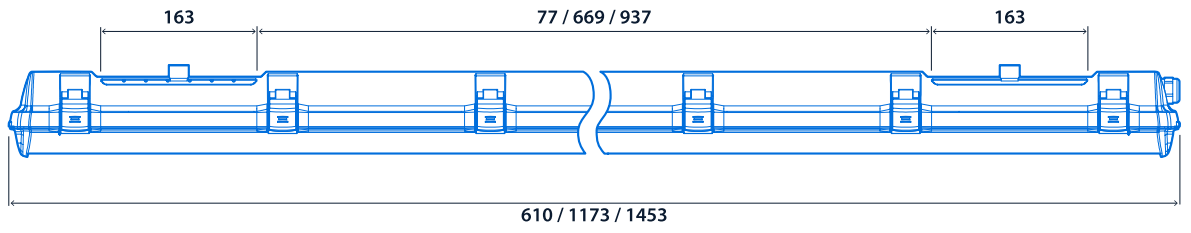
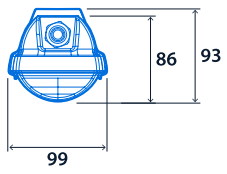
CRI	80+	Colour temperature	4000 K
Rated life (hours)	100 K - L80/B10	LED protection	LUX Guard
Driver efficiency	>84%	Replaceable light source	Yes
Power factor	>0.93	MacAdam ellipse	3 Step

Compliance

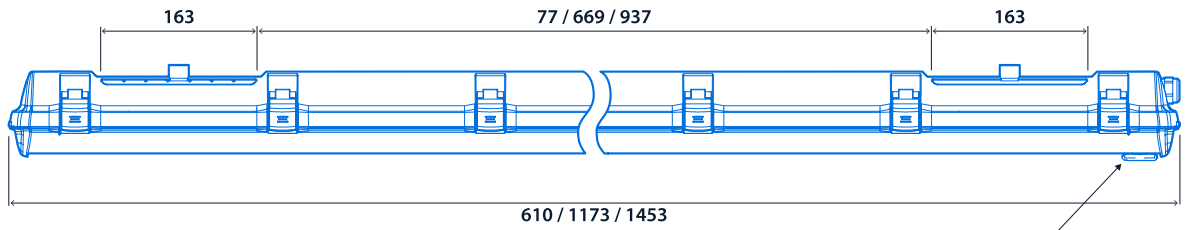
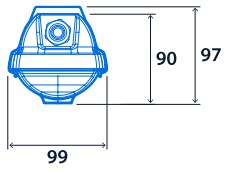
UKCA	Yes	CE	Yes
Energy efficiency class	This product contains a light source of energy efficiency class A		

Dimensions

Standard



SmartScan



Range

Emergency system (optional)	Product	LED power	Nominal size	Lighting control system	Through wiring (optional)
W SmartScan Emergency*	TP Thoroproof	010 10 W	S 600 mm	S SmartScan Internal A Dimming (DALI) L Non-dimming	TW Through wiring***
D DALI / Self-Test Emergency**		016 16 W			
E Standard Emergency**		023 23 W	M 1200 mm		
		035 35 W			
		024 24 W	L 1500 mm		
034 34 W					
049 49 W					

* **Only** available with **S** control type ** **Only** available with **A / L** control type *** **Only** available with **M / L** nominal size

E.g. **WTP023MSTW** = SmartScan Emergency / Thoroproof / 23 W / 1200 mm / SmartScan Internal / Through wiring

Accessories

Product code	Description	Weight
TP20807	Stainless steel cover clip - 12 required for 1200 mm / 14 required for 1500 mm	0.01 kg



Non-dimming / DALI version



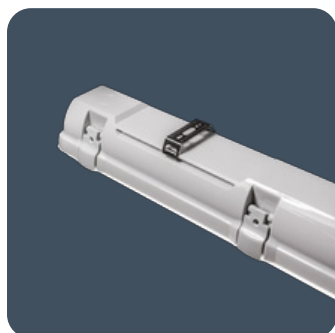
SmartScan version with through wiring



Through wiring option



Gear tray hook for easy installation



Pair of adjustable stainless steel brackets supplied



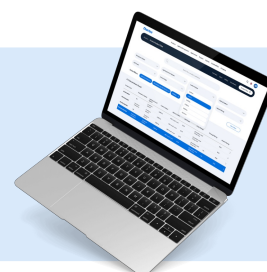
Pair of steel spring loops supplied



Optional stainless steel cover clips



Click or scan here
View Thorproof variants
using our online filtering tool



Information is correct as of 29 Apr 2026, however must not be interpreted as a guarantee of individual product performance and/or characteristics. We reserve the right to alter specifications and designs without prior notice.