

Corrosion-resistant IP66 polycarbonate luminaires

Highly efficient corrosion and impact-resistant linear luminaires with injection moulded polycarbonate body and cover, both fire-retardant. Thoroproof is a durable luminaire for tough environments and rated to IP66 and IK08.

Designed to deliver a long 100,000 hour life over an ambient temperature range of -20°C to +45°C. Smartscan and integral emergency versions are available.

Applications: plant rooms, industrial process areas, workshops, storage areas, multi-storey car parks, shower rooms and toilet blocks.

- Smooth easy-clean lines
- Secure and easy to operate cover clips (stainless steel option sold separately)
- Fast installation via-external stainless steel brackets maintains IP rating
- Factory fitted through wiring option available
- Suitable for external applications but recommended to be mounted under a canopy and not exposed to direct sunlight
- SmartScan wireless technology removes the need for control cabling. Ideal for retro-fit

Notes: For ambient temperatures below the stated minimum contact the Thorlux Technical department

IP66

IK08

Up to 167.9 LL/CW

 SMARTSCAN

 LUXGUARD

Specification

Mounting	Surface	IP rating	IP66
Impact rating	IK08	Nominal size	1200 mm 1500 mm

Lighting

Optic	Opal cover	Lumen output	4,410 lm - 9,255 lm
Efficacy	Up to 167.9 LL/CW		

Emergency data

Emergency lumen output	715 lm - 735 lm	Emergency type	Maintained
Emergency duration	3 hours	Battery specification	Lithium Iron Phosphate (LiFePO4)



## Power

LED power	23 W - 49 W	Circuit power	27 W - 56 W
-----------	-------------	---------------	-------------

## Construction

Housing	Injection moulded fire-retardant polycarbonate body	Body colour	Light Grey
Optical assembly	Fire-retardant polycarbonate cover		

## LED characteristics

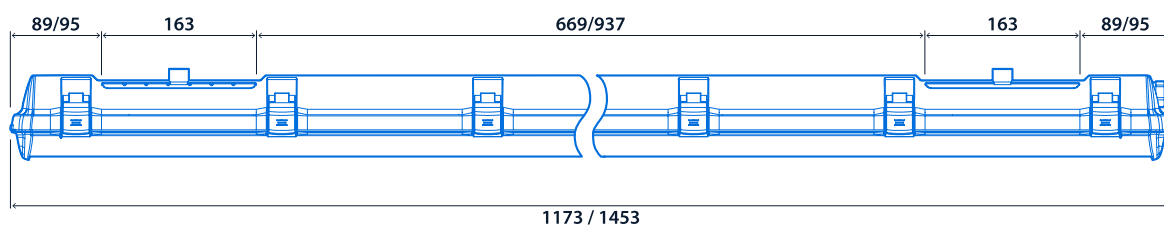
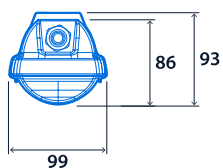
CRI	80+	Colour temperature	4000 K
Rated life (hours)	100 K - L80/B10	LED protection	LUX Guard
Driver efficiency	>84%	Replaceable light source	Yes
Power factor	>0.93	MacAdam ellipse	3 Step

## Compliance

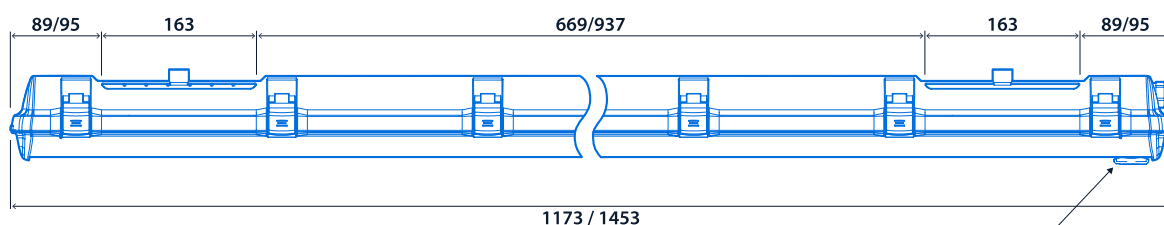
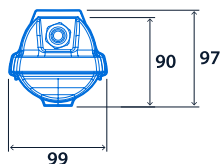
UKCA	Yes	CE	Yes
Energy efficiency class	This product contains a light source of energy efficiency class A	Food production standards	HACCP

## Dimensions

### Standard



### SmartScan



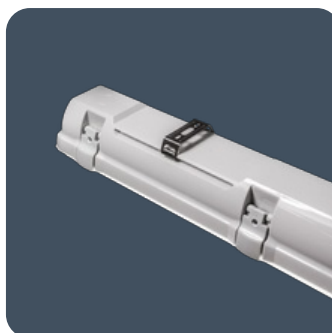
SmartScan Sensor



Non-dimming / DALI version



SmartScan version with through wiring



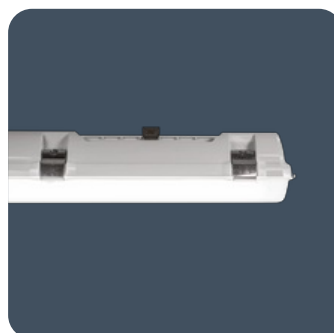
Adjustable stainless steel brackets



Through wiring option



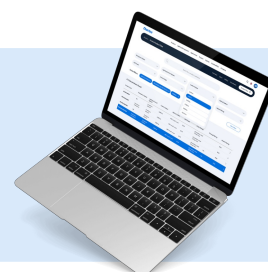
Gear tray hook for easy installation



Optional stainless steel cover clips



**Click or scan here**  
View Thoroproof variants  
using our online filtering tool



Information is correct as of 07-May-2025, however must not be interpreted as a guarantee of individual product performance and/or characteristics. We reserve the right to alter specifications and designs without prior notice.