

Track-mounted LED luminaires

DuoFlux is a track mounted LED luminaire for retail applications. The dual-purpose optical system provides well-lit retail spaces. The highly efficient lenses control the distribution of light to highlight vertical displays, whilst the twin opal diffusers provide general lighting, lighting higher up the gondolas and increasing visual comfort. The two optical systems can be switchable when used with DALI controls.

DuoFlux can be rotated 90° making it suitable for both with-aisle or cross-aisle lighting installations.

For use with the Track system.

Applications: Retail

- Steel body and end caps finished in non-yellowing white (RAL9016)
- Dual optical components; opal diffusers for general lighting and broad optical distribution for efficient illumination of the retail space and gondolas
- Luminaire can be rotated 90° to suit either with-aisle or cross-aisle track mounting
- Switchable optics when used with DALI controls
- Suitable for installation into Global track

Notes: Alternative beam distributions available to special order

IP20

138.6 LL/CW

 LUXGUARD



Specification

Mounting	Track	IP rating	IP20
----------	-------	-----------	------

Lighting

Distribution	Broad	Lumen output	5,960 lm
Efficacy	138.6 LL/CW		

Power

LED power	39 W	Circuit power	43 W
-----------	------	---------------	------

Construction

Housing	Steel body and end caps	Finish	Full polyester powder coat
Body colour	White (RAL 9016)	Optical assembly	Polycarbonate high efficiency LED lenses with twin polycarbonate diffusers

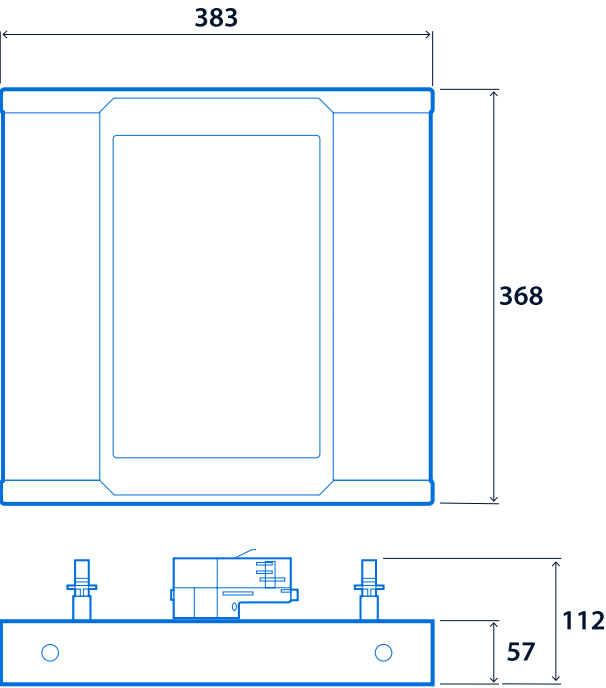
LED characteristics

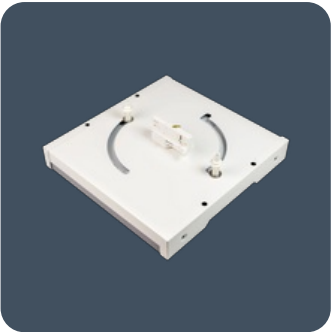
CRI	80+	Colour temperature	4000 K
Rated life (hours)	100 K - L80/B10	LED protection	LUX Guard
Driver efficiency	>92%	Replaceable light source	Yes
Power factor	>0.95	MacAdam ellipse	3 Step

Compliance

UKCA	Yes	CE	Yes
Energy efficiency class	This product contains a light source of energy efficiency class B		

Dimensions





**Click or scan here**  
View DuoFlux variants using  
our online filtering tool



Information is correct as of 16 May 2025, however must not be interpreted as a guarantee of individual product performance and/or characteristics. We reserve the right to alter specifications and designs without prior notice.