

# Air Quality Sensor

IP40   

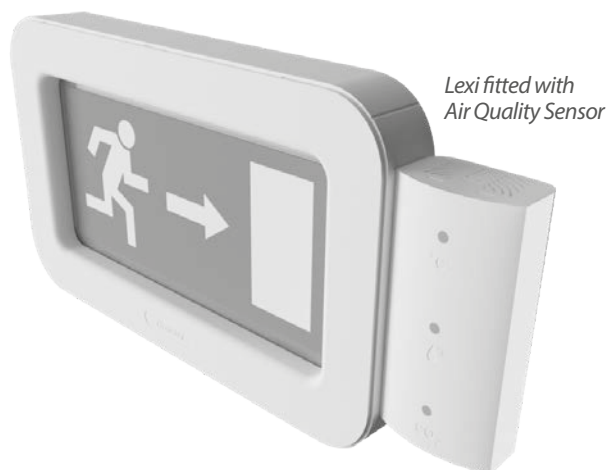
## INSTALLATION DETAILS

 It is recommended that all sensors are installed at a consistent height to ensure consistency in the readings taken 

### AIR QUALITY SENSOR

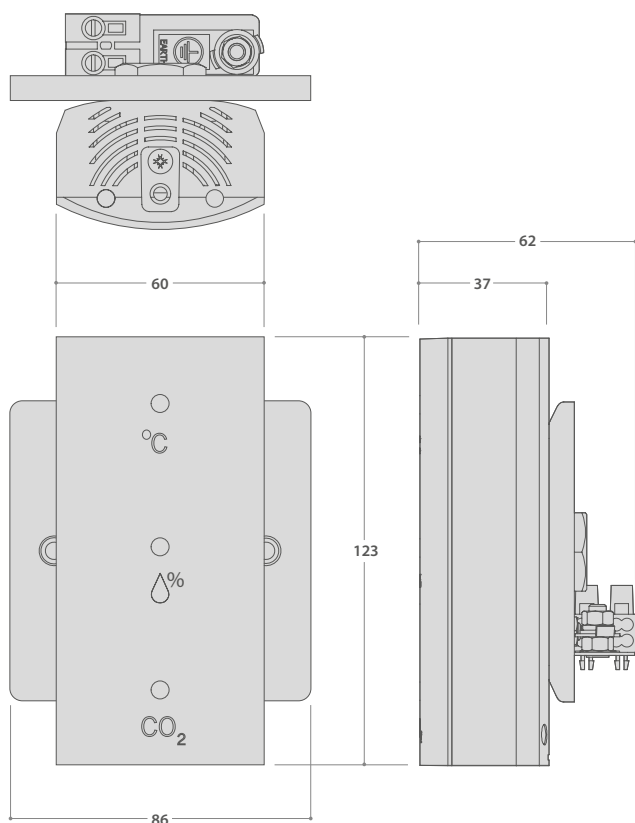


Air Quality Sensor



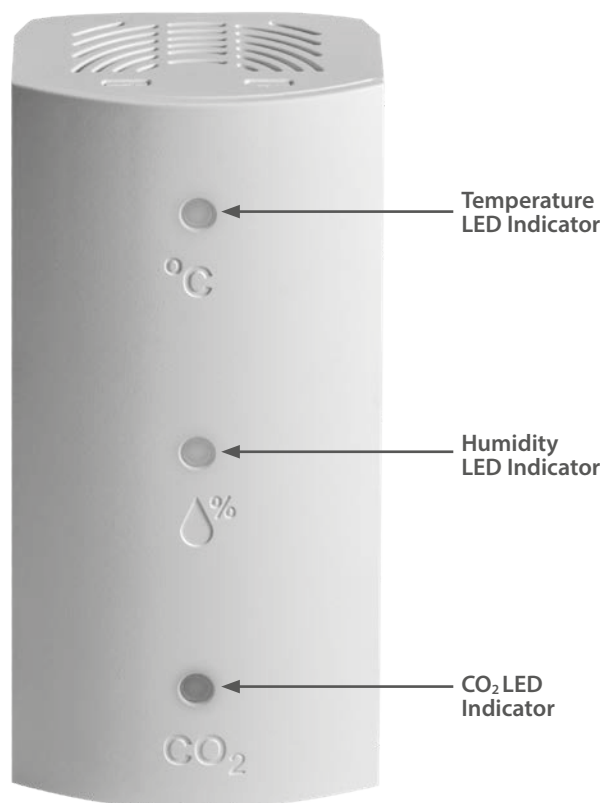
Lexi fitted with  
Air Quality Sensor

### DIMENSIONS



### FUNCTIONS

The coloured LEDs on the front of the sensor, indicate pre-set levels within the sensor. If the level goes past the set point the LED will change accordingly.



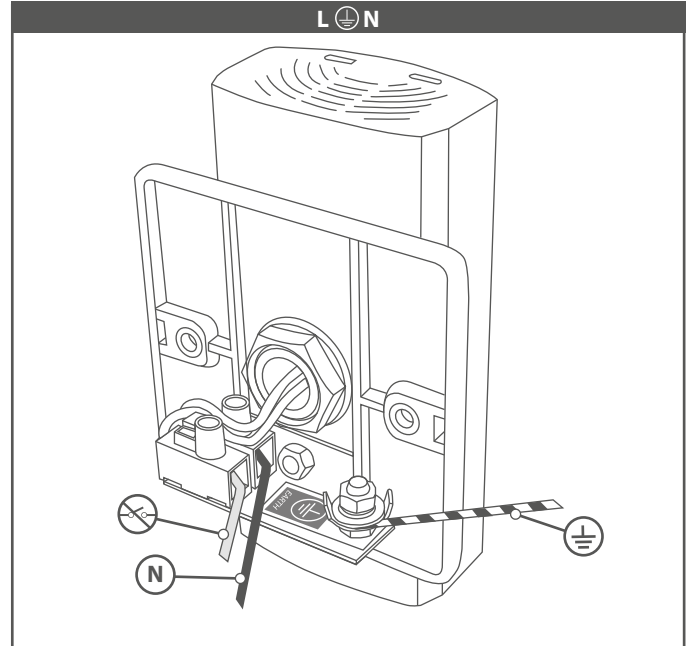
## FEATURES

- The **Air Quality Sensor** allows the user to monitor temperature, humidity and CO<sub>2</sub> throughout the day
- Coloured LED indicators show status
- Supplied factory-fitted to a LEXI Exit Sign or stand-alone for installation on a single gang pattress




## INSTALLATION

- To confirm operation the **Air Quality Sensor** will flash a test sequence within 30 seconds of powering up. All LED indicators will flash 'off, red, green, blue'.
- Please allow a further 30 seconds before first reading.
- Commissioning the of **Air Quality Sensor** should be performed by Thorlux engineers.
- Operating temperature range 0 - 50°C

For further assistance or help, please contact [technicalhelpline@thorlux.co.uk](mailto:technicalhelpline@thorlux.co.uk) or call on 01527 586 400



## AIR QUALITY SENSOR SETTINGS

SETTING	TEMPERATURE	HUMIDITY	CO <sub>2</sub>
 <b>INACTIVE</b> Typical Applications: Care Homes, Offices	RED >26°C	RED >70%	RED >1000 ppm
	AMBER 24-26°C	AMBER 51-70%	AMBER 800-1000 ppm
	GREEN 20-24°C	GREEN 25-50%	GREEN <800 ppm
	BLUE <20°C	AMBER 20-25%	
		RED <20%	
 <b>SEMI-ACTIVE.</b> Typical Applications: Warehouses, Factories, Retail	RED >25°C	RED >70%	RED >1000 ppm
	AMBER 23-25°C	AMBER 51-70%	AMBER 800-1000 ppm
	GREEN 20-23°C	GREEN 25-50%	GREEN <800 ppm
	BLUE <20°C	AMBER 20-25%	
		RED <20%	
 <b>ACTIVE</b> Typical Applications: Sports Halls	RED >21°C	RED >70%	RED >1000 ppm
	AMBER 19-21°C	AMBER 61-70%	AMBER 800-1000 ppm
	GREEN 16-19°C	GREEN 25-60%	GREEN <800 ppm
	BLUE <16°C	AMBER 20-25%	
		RED <20%	

**PLEASE NOTE:** It can take up to 3 weeks continuous operation before achieving a stable reading for CO<sub>2</sub> levels

## PROGRAMMING

SmartScan Air Quality Sensors are programmed with the SmartScan Programmer. This device uses bi-directional infrared to program the SmartScan Air Quality Sensor. Ensure at all times, during use, only one device can be seen by the programmer.

Use SmartScan Emergency Menu.

Link RX - 0 LED / 6 No LED indicator - Sedentary (default)  
 Link RX - 1 LED / 7 No LED indicator - Semi Active  
 Link RX - 2 LED / 8 No LED indicator - Active

## MAINTENANCE

The **Air Quality Sensor** should not be subjected to undue mechanical shock or extremes of temperature. Clean only with a clean dry cloth.

## MODIFICATIONS

Thorlux products should not be modified. Any modification may render the product unsafe and will invalidate any Safety/ Approval marks.

## NOTICE TO CONTRACTOR - PLEASE PASS THIS LEAFLET TO THE END-USER



MERSE ROAD NORTH MOONS MOAT  
 REDDITCH WORCS. B98 9HH ENGLAND  
 e-mail: [thorlux@thorlux.co.uk](mailto:thorlux@thorlux.co.uk)  
 Web: [www.thorlux.com](http://www.thorlux.com)  
 ☎ +44 (0)1527 583200

**Australia:** [www.thorlux.com.au](http://www.thorlux.com.au) ☎ +61 (0)2 9907 1261  
**Deutschland:** [www.thorlux.de](http://www.thorlux.de) ☎ +49 (0)2841 39399 10  
**Ireland:** [www.thorlux.ie](http://www.thorlux.ie) ☎ +353 (0)1 460 4608  
**UAE:** [www.thorlux.ae](http://www.thorlux.ae) ☎ +971 (0)2 654 4060



FM 10913 EMS 532104 OHS 704131