

LIGATURE-RESISTANT, IMPACT-RESISTANT LED LUMINAIRES



SPECIFICATION

- 1.2mm steel body finished full polyester powder coated textured white
- 4mm steel front cover frame retained with tamper-resistant captive fixings
- 10mm TP(a) fire-retardant polycarbonate diffuser.
- Light sensing control module option providing maintained illuminance with selectable light levels (high brightness/day/night light)
- Individual and continuous mounting, continuous versions require infills
- Infills with VESDA, ventilation and overt/covert designs available on request
- Ministry of Justice Estates approved NOMS STD/E/SPEC 022 safer cells
- High impact strength - IK10++
- Reduced luminaire profile and footprint with fewer cover fixings – reducing ligature risks.
- Manufactured in the UK
- 5 year Warranty
- Fitted with 3000K or 4000K LEDs

RANGE

	LED	3000K VERSION	4000K VERSION	LENGTH	APPROX. kg	CIRCUIT	
LIGHT SENSING MODULE	INDIVIDUAL	35W 72W	SQ 19369 SQ 19370	SQ 19371 SQ 19372	700mm 1150mm	7.0 13.0	H H
	CONTINUOUS	35W 72W	SQ 19359 SQ 19360	SQ 19361 SQ 19362	700mm 1150mm	7.0 13.0	H H
STANDARD	INDIVIDUAL	35W 72W	SQ 19365 SQ 19366	SQ 19367 SQ 19368	700mm 1150mm	7.0 13.0	L/A L/A
	CONTINUOUS	35W 72W	SQ 19355 SQ 19356	SQ 19357 SQ 19358	700mm 1150mm	7.0 13.0	L/A L/A

CIRCUIT TYPE - suffix catalogue number with:

L - non-dimming (LED) / **A** - dimming (DALI) / **H** - Light Sensing Module (LSM) e.g. **SQ 19365L** etc.

EMERGENCY VERSION - prefix catalogue number with:

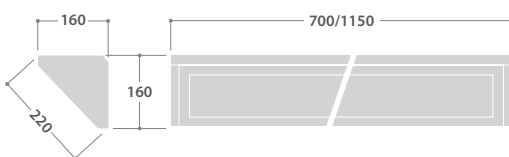
E - Emergency / **T** - AutoTest (Not recommended for use in cells) e.g. **ESQ 19365L** etc.

Add 0.3kg to weights listed.

INTEGRAL NIGHT LIGHT VERSION - suffix catalogue number with:

N (Can add to A or L versions only) e.g. **SQ 19365LN** etc.

DIMENSIONS

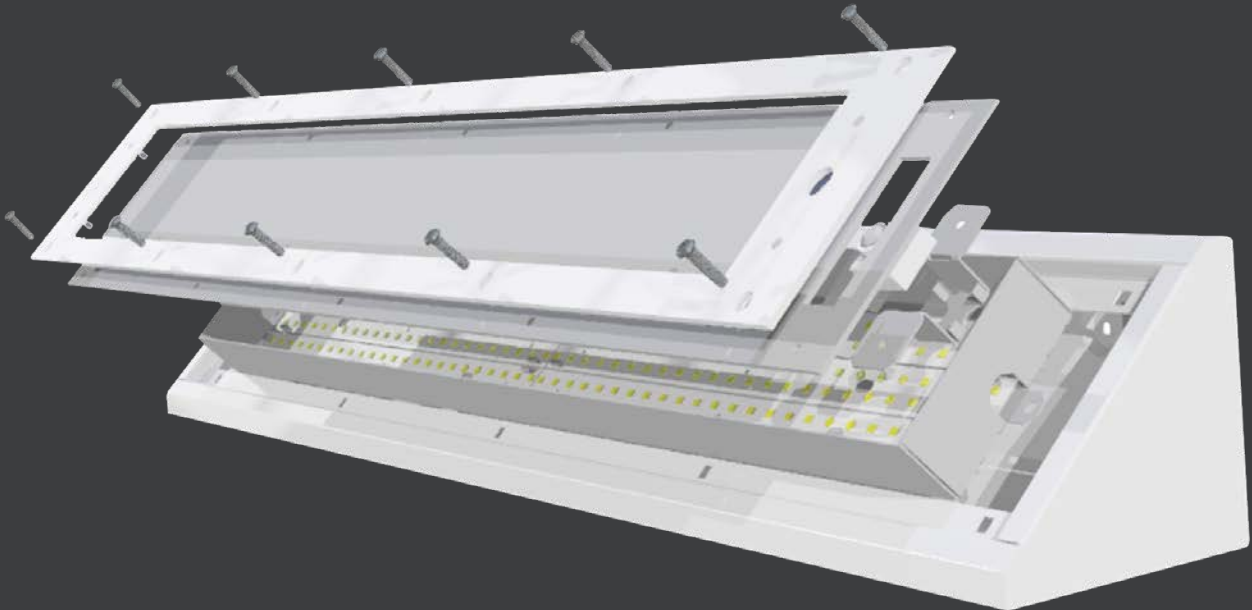


LED CHARACTERISTICS

CRI	80+
COLOUR TEMPERATURE	3000K/4000K
RATED LIFE (HOURS)	88K - L70/B10
PROTECTION	LUX GUARD
DRIVER EFFICIENCY	>85%
REPLACEABLE	YES
POWER FACTOR	>0.95
LL/CW	76.1

For LED characteristics explanation see www.solite-europe.com/led-guide

SHIELD CORNICE



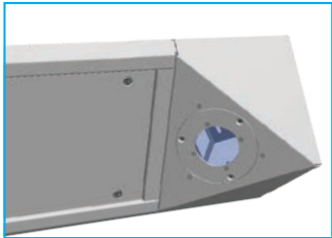
ACCESSORIES

DESCRIPTION	CAT. No
Infill	SQ XXXXmm
CCTV Continuous	SQ 19363
CCTV Individual	SQ 19364
T30 pin Torx bit (Suitable for magnetic bit holder)	KEY 16977

INFILL NOTE: Please replace 'XXXX' with the total length in mm.
e.g. to specify a 970mm infill use **SQ 0970mm**



Infill



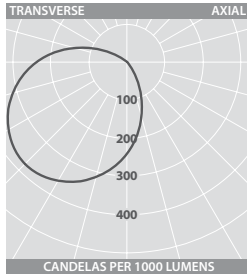
CCTV Module Continuous



LSM behind 10mm TP(a) polycarbonate

The light sensing module enables the required light levels (High/Day/Night) to be set via a remote hand-held programmer. The LSM also provides maintained illuminance and further energy savings by reducing the light output when sufficient natural daylight is present.

PHOTOMETRIC GUIDE



Luminaire Lumen Output
35W = 3120lm
72W = 6240lm