

VVA



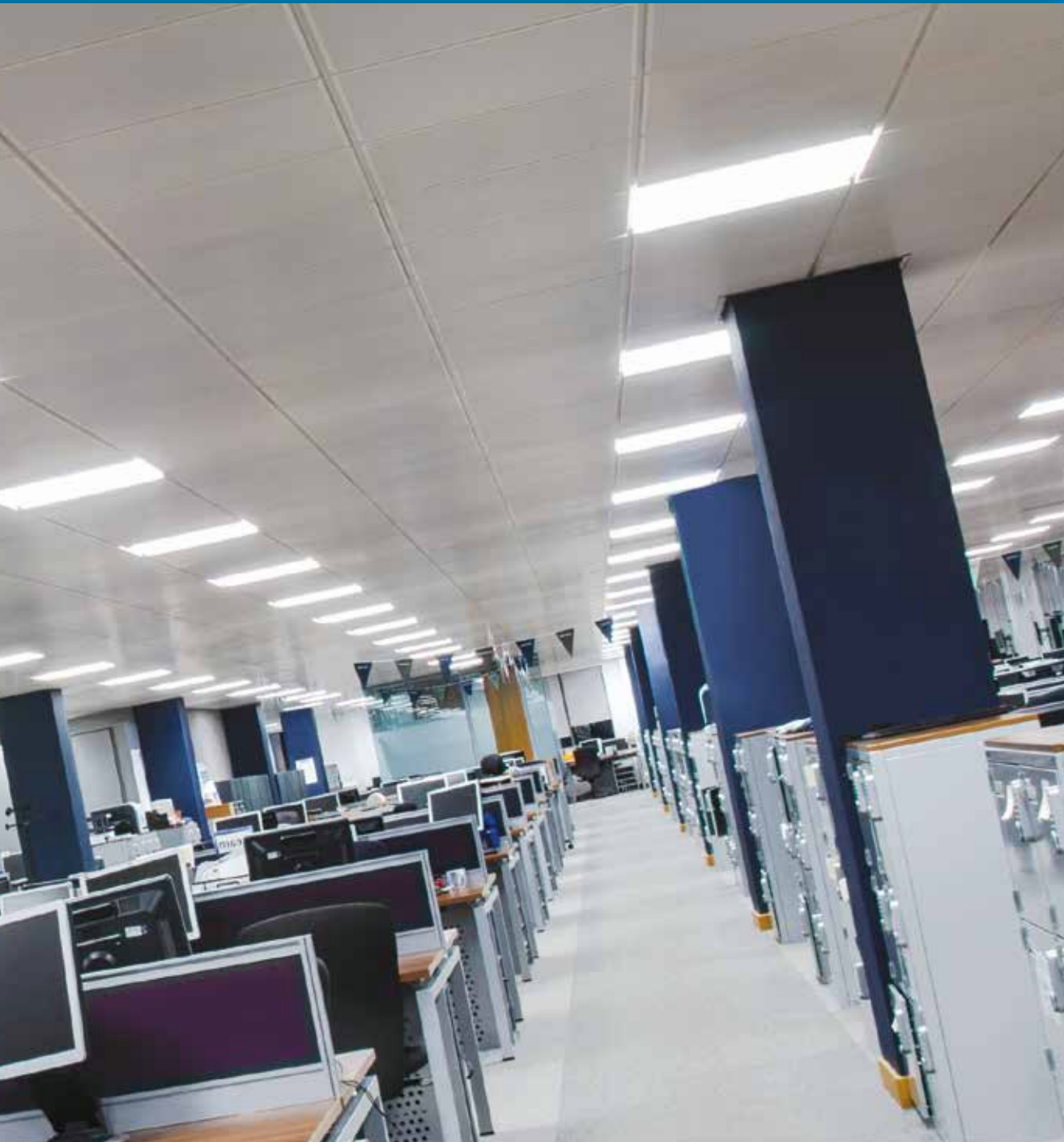
TL Thorlux
Lighting

VIVA

SUPREMELY EFFICIENT VDT OFFICE RECESSED LED LUMINAIRES WITH MICROPRISM LENS. THE MINIMALISTIC DESIGN ERADICATES THE METAL FRAME NORMALLY ASSOCIATED WITH FLAT PANEL DIFFUSERS SO MAINTAINING THE CLEAN LINES PROVIDED BY THE CEILING GRID.



VVA



The diffuser of the VVA mimics the size and shape of a tegular ceiling tile so there is no protrusion into the space.

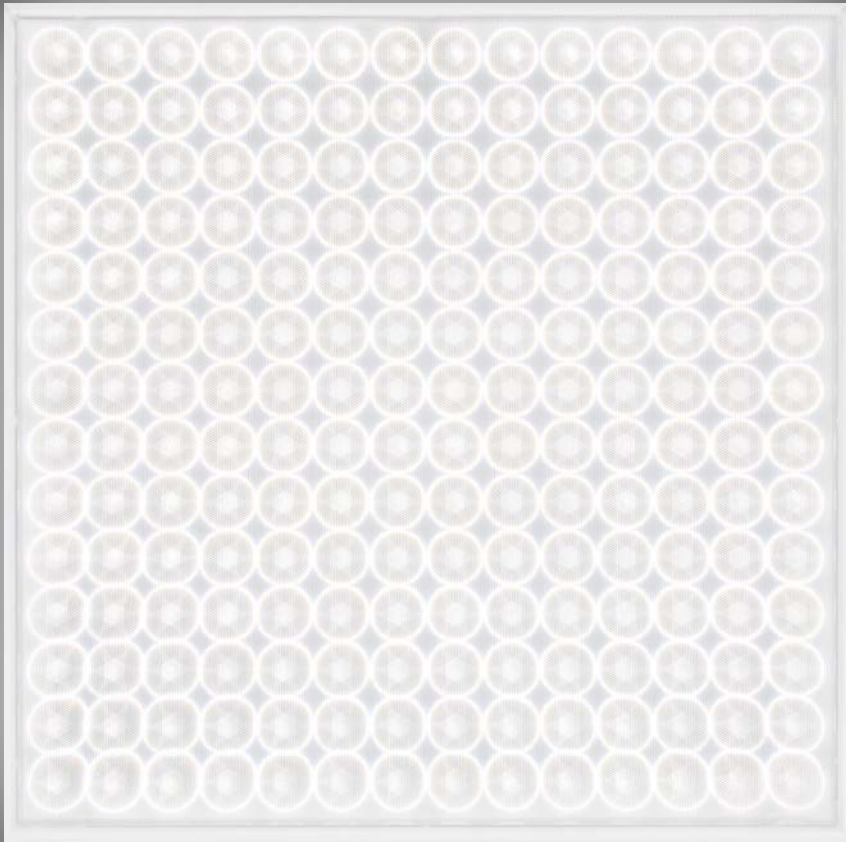
VIVA



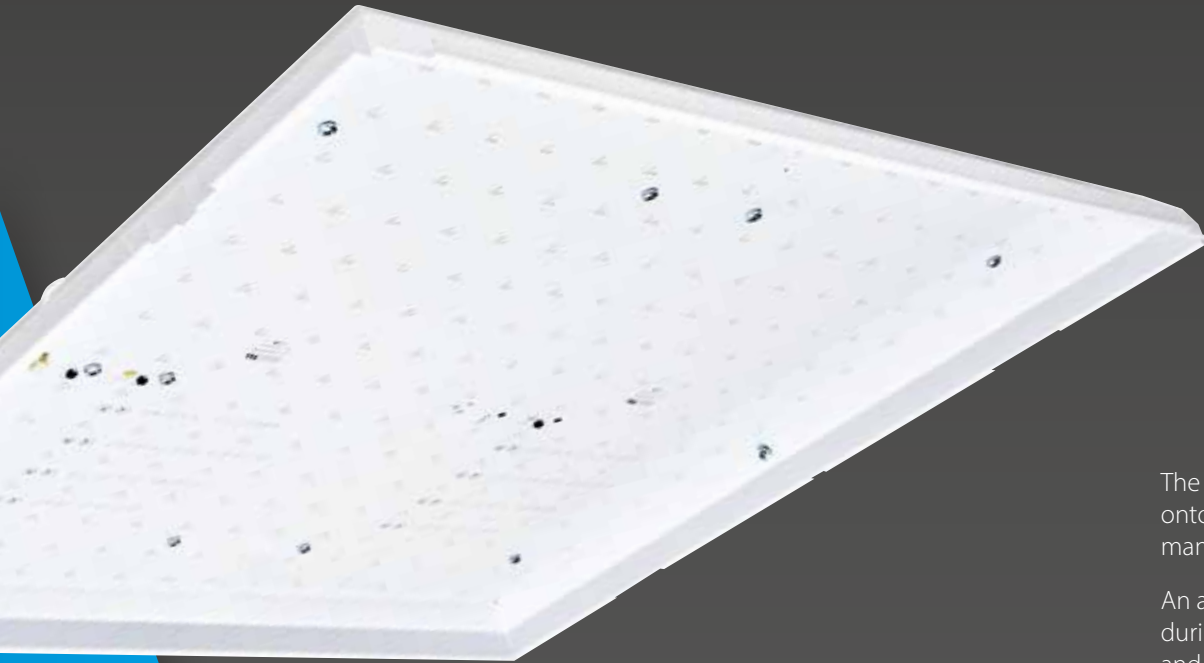
VIVA visually blends with the appearance of a 600 x 600 suspended ceiling only protruding the depth of a standard ceiling tile.

VIVA is designed to fit most ceiling types offering flush fitting with no distraction to the smooth surfaces into which it is mounted.

The subtle appearance of the luminaire is transformed when powered. The LEDs produce a vibrant illuminated ceiling tile.



LIFE
&
ENERGY



LED Light Engine

The Thorlux light engine uses the very latest “medium power” white LEDs placed onto a specially designed circuit board (patent applied for) providing excellent thermal management together with LED failure protection and surge / high voltage protection.

An additional high power LED is fitted on emergency versions and is only illuminated during mains failure. The circuit boards use either 196 LEDs (36W) or 144 LEDs (16W/21W) and are connected to the body using a durable multi-way plug connector.

A truly fit and forget, well-engineered, dedicated light engine having a life expectancy well in excess of 90,000 hours.

LED TECHNOLOGY

ENERGY SAVINGS

Available in three power ratings of 16W, 21W and 36W and with the option of the energy saving Smart control system for maximum energy efficiency.

Typical Office Installation

3000 hours per annum

	4 x 14W HF	VIVA 36W Non-dimming
Luminaires	24	24
Total Circuits W/Luminaire	60	41
Total installation W	1,440W	984W
kWh per annum	4,320	2,952 32% less energy
Annual CO ₂ production	2,290kg	1,565kg 32% less CO₂

VIVA with 4000K medium power Ra80+ colour rendering index LEDs has a low glare polycarbonate controller making it ideal for use in offices with and without VDTs.

The VIVA is serviceable with fully replaceable LED boards.

ALL LED BOARDS OFFER FAILURE PROTECTION;
IF ONE LED FAILS IT WILL NOT AFFECT THE OTHERS

ALL OF THE LED BOARDS ARE REPLACEABLE

A 36W VIVA USES **32% LESS** ENERGY THAN 4 x 14W AND PROVIDES THE SAME LUX LEVEL

FAST INSTALLATION

The shallow body makes VIVA suitable for areas with a small ceiling void.

The terminals on conventionally wired luminaires can be accessed quickly by simply releasing the diffuser, reducing installation time and keeping costs low.





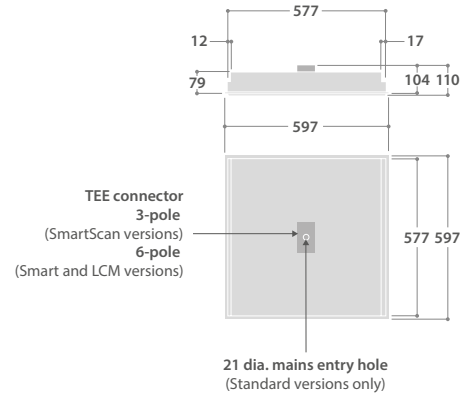
TECHNICAL INFORMATION

PERFORMANCE GUIDE

Typical task area illuminance assuming an open area with good reflection factors, 0.85 maintenance factor and a 2.65 metre ceiling height.

LED	SPACING (Metres)	LUX AVERAGE	LUX AVERAGE
		70/50/20	80/60/30
16W	3.0 x 3.0	240	270
	3.0 x 2.4	300	330
	2.4 x 2.4	360	410
21W	3.0 x 3.0	330	370
	3.0 x 2.4	400	460
	2.4 x 2.4	500	550
36W	3.0 x 3.0	530	580
	3.0 x 2.4	650	720
	2.4 x 2.4	780	880

DIMENSIONS (mm)



LED CHARACTERISTICS

CRI	80+
COLOUR TEMPERATURE	4000K
RATED LIFE (HOURS)	91K - L80/B10
PROTECTION	LUX GUARD
DRIVER EFFICIENCY	>85%
REPLACEABLE	YES
POWER FACTOR	>0.9
LL/CW	125.8

For LED characteristics explanation see www.thorlux.com/led-guide

ACCESSORIES

DESCRIPTION	CAT. No.
Optional side arm suspension kit ▲	XL 11138

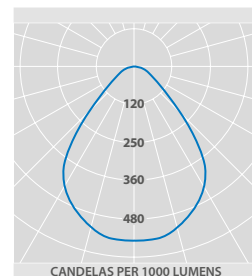
▲ 4 arms per kit - not required for lay-in mounting

How to specify

600 x 600 recessed LED luminaire with a polyester powder coated steel body, LG7:2015 (<1500cd/m² @ 65°) compliant optical control using seamless edge to edge polycarbonate micro prism lens. LED light engine providing 90,000 hour life, CRI 80+ and LED failure protection. Control gear and LED circuit boards fully replaceable for future maintenance. Self-contained emergency option.

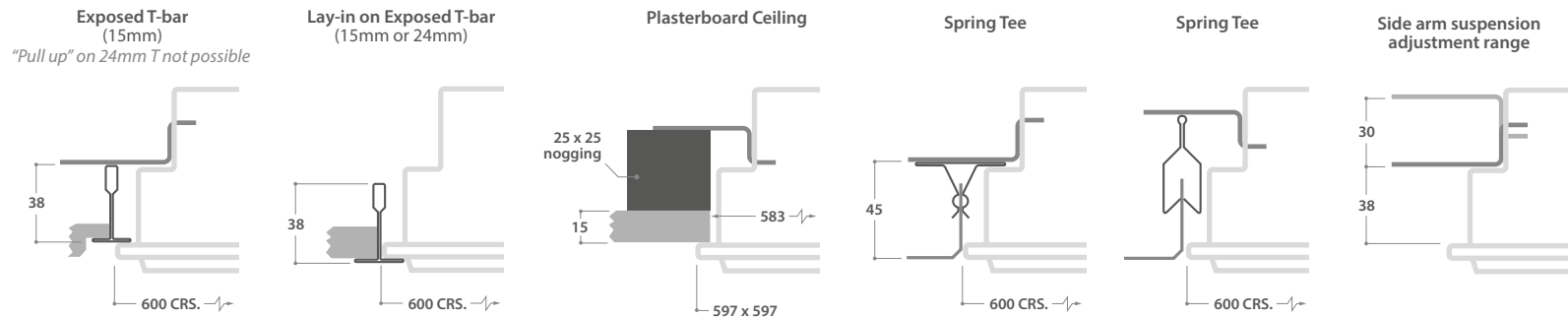
PHOTOMETRIC GUIDE

LED



LUMINAIRE LUMEN OUTPUT
 16W = 2215lm
 21W = 3020lm
 36W = 4775lm

MOUNTING ARRANGEMENTS



RANGE

WEB LINK >
 "PLUG AND PLAY"
 LIGHTING CABLE
 MANAGEMENT



FEATURES

- Steel body finished full polyester non-yellowing satin white (RAL 9016)
- Shallow body depth
- Supremely efficient lens system - 144 lumens per "lamp" watt
- Excellent glare cut back above 65° for EN12464-1 / LG7 (<1500 cd/m² @ 65°) compliance
- Lively LED effect
- Construction maintains ceiling "lines" with no protrusion into space
- Suitable for most ceiling types
- Designed to exclude dust, dirt and flies from lamp compartment
- SmartScan wireless technology removes the need for control cabling. Ideal for retro-fit.
- Fitted with 4000K LEDs

RANGE

	NOMINAL SIZE (mm)	LED	CAT. No.	APPROX. kg	CIRCUIT
SMART	600 x 600	16W	VV 17588	6.4	D/SS
		21W	VV 16534	6.4	D/SS
		36W	VV 16869	6.4	D/SS
STANDARD	600 x 600	16W	VV 17589	6.3	L/A
		21W	VV 16536	6.3	L/A
		36W	VV 16537	6.3	L/A

CIRCUIT TYPE - suffix catalogue number with:

SMART D - Smart / SS - SmartScan

STANDARD L - non-dimming (LED) / A - dimming (DALI) e.g. **VV 17588SS** etc.

EMERGENCY VERSION - prefix catalogue number with:

EVV - Emergency (Not available when selecting the 'SS' suffix)

TVV - AutoTest

WVV - SmartScan (Only available when selecting the 'SS' suffix)

e.g. **WVV 17588SS** etc.

Add 0.3kg to weights listed



Smart version

SmartScan Configurations



Find out more at www.thorlux.com/smartsan



Designers, manufacturers and suppliers
of professional lighting systems

INDUSTRIAL LUMINAIRES
COMMERCIAL LUMINAIRES
FLOODLIGHTING LUMINAIRES
ARCHITECTURAL LUMINAIRES
HEALTHCARE LUMINAIRES
HAZARDOUS AREA LUMINAIRES
RETAIL AND DISPLAY LUMINAIRES
CONTROLS AND SYSTEMS

A DIVISION OF F.W. THORPE PLC

Thorlux Carbon Offsetting Project:
www.thorlux.com/trees

The information given in this catalogue is typical and must not be interpreted as a guarantee of individual product performance and/or characteristics. We reserve the right to alter specifications and designs without prior notice.

Thorlux Lighting
Merse Road
North Moons Moat
Redditch
Worcestershire
B98 9HH
England

T +44 (0)1527 583200
F +44 (0)1527 584177
E thorlux@thorlux.co.uk
W www.thorlux.com

Direct UK Sales Line: 01527 583222

Thorlux Lighting Ireland
Unit G6
Riverview Business Park
Nangor Road
Gallanstown
Dublin 12
Ireland

T +353 (0)1 460 4608
F +353 (0)1 460 4609
E thorlux@thorlux.ie
W www.thorlux.ie

Thorlux Lighting Deutschland
Ernst Gnoß Strasse 7
40219 Düsseldorf
Deutschland

T +49 (0)211 695 603-10
F +49 (0)211 695 603-11
E thorlux@thorlux.de
W www.thorlux.de

Thorlux Lighting Australasia Pty Ltd.
31 Cross Street
Brookvale
Sydney
NSW 2100
Australia

T 1300 04 32 32
T +61 (0)2 9907 1261
E thorlux@thorlux.com.au
W www.thorlux.com.au

Sales Support All Capitals
Registered No. ACN 139 400 507

Thorlux Lighting LLC
Office 334
European Business Centre
Green Community
Dubai Investment Park 1
PO Box 33484
Dubai
United Arab Emirates

T +971 (0)2 656 5842
F +971 (0)2 622 4149
E sales@thorlux.ae
W www.thorlux.ae

P.N. 2407F Feb. 21

