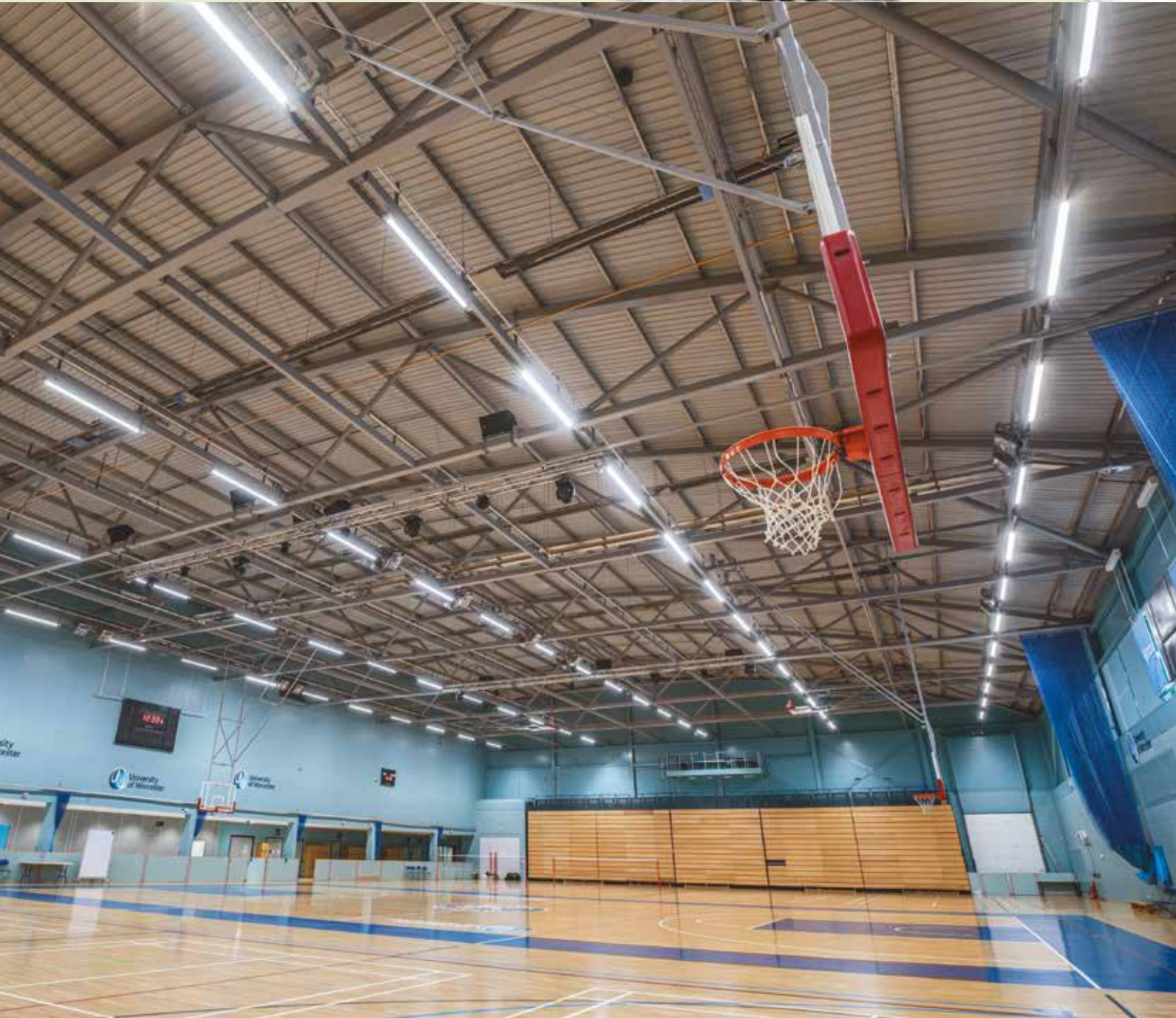


SOLOW LED

Smart version

High Level
Smart version



HIGH PERFORMANCE LED LOW BAY LUMINAIRES



Ball impact resistant option to
DIN EN 18032 Part 3 VDE 0710 Part 13
(Excluding High Level Smart versions)

SPECIFICATION

- Silver extruded aluminium body - fins aid cooling
- High quality control gear and LEDs designed to achieve 100,000 hour life expectancy
- Polycarbonate injection moulded end caps
- Narrow and broad distribution
- Clip fit stainless steel mounting brackets for fast installation (supplied)
- Smooth wipe clean surfaces, no dust traps
- Fitted with 2m flying lead
- Complies with food production standards IFS, HACCP and BRC
- Smart versions, suitable for use up to 8m mounting height or high level versions to 18m
- SmartScan wireless technology removes the need for control cabling. Ideal for retro-fit
- Separate non-maintained emergency versions available
- Fitted with 4000K LEDs

LED CHARACTERISTICS

CRI	80+
COLOUR TEMPERATURE	4000K
RATED LIFE (HOURS)	100K - L70/B10
PROTECTION	LUX GUARD
DRIVER EFFICIENCY	>90%
REPLACEABLE	YES
POWER FACTOR	>0.90

LL/CW **146.8**

For LED characteristics explanation see
www.thorlux.com/led-guide

SmartScan Configurations



Find out more at www.thorlux.com/smartsan



RANGE

	LENGTH (mm)	LED	BROAD DISTRIBUTION	NARROW DISTRIBUTION	APPROX. kg	CIRCUIT
SMART	1115	126W	SWL 17363	SWL 17366	6.6	D/SS
	1616	189W	SWL 17364	SWL 17367	9.9	D/SS
	2117	252W	SWL 17365	SWL 17368	12.9	D/SS
HIGH LEVEL SMART	1207	126W	SWL 17369	SWL 17372	6.9	D/SS
	1708	189W	SWL 17370	SWL 17373	10.2	D/SS
	2209	252W	SWL 17371	SWL 17374	13.2	D/SS
STANDARD	1115	126W	SWL 17375	SWL 17378	6.5	L/A
	1616	189W	SWL 17376	SWL 17379	9.8	L/A
	2117	252W	SWL 17377	SWL 17380	12.8	L/A
EMERGENCY	470	8W	EWL 17381 ▲	EWL 17382 ▲	3.2	
	470	8W	TWL 17381 ■	TWL 17382 ■	3.2	
	470	8W	WWL 17381 +	WWL 17382 +	3.2	

CIRCUIT TYPE - suffix catalogue number with:

SMART D - Smart / SS - SmartScan

STANDARD L - non dimming (LED) / A - dimming (DALI) e.g. SWL 17363SS etc.

EMERGENCY VERSION: ▲ EWL - Emergency / ■ TWL - AutoTest / + WWL - SmartScan

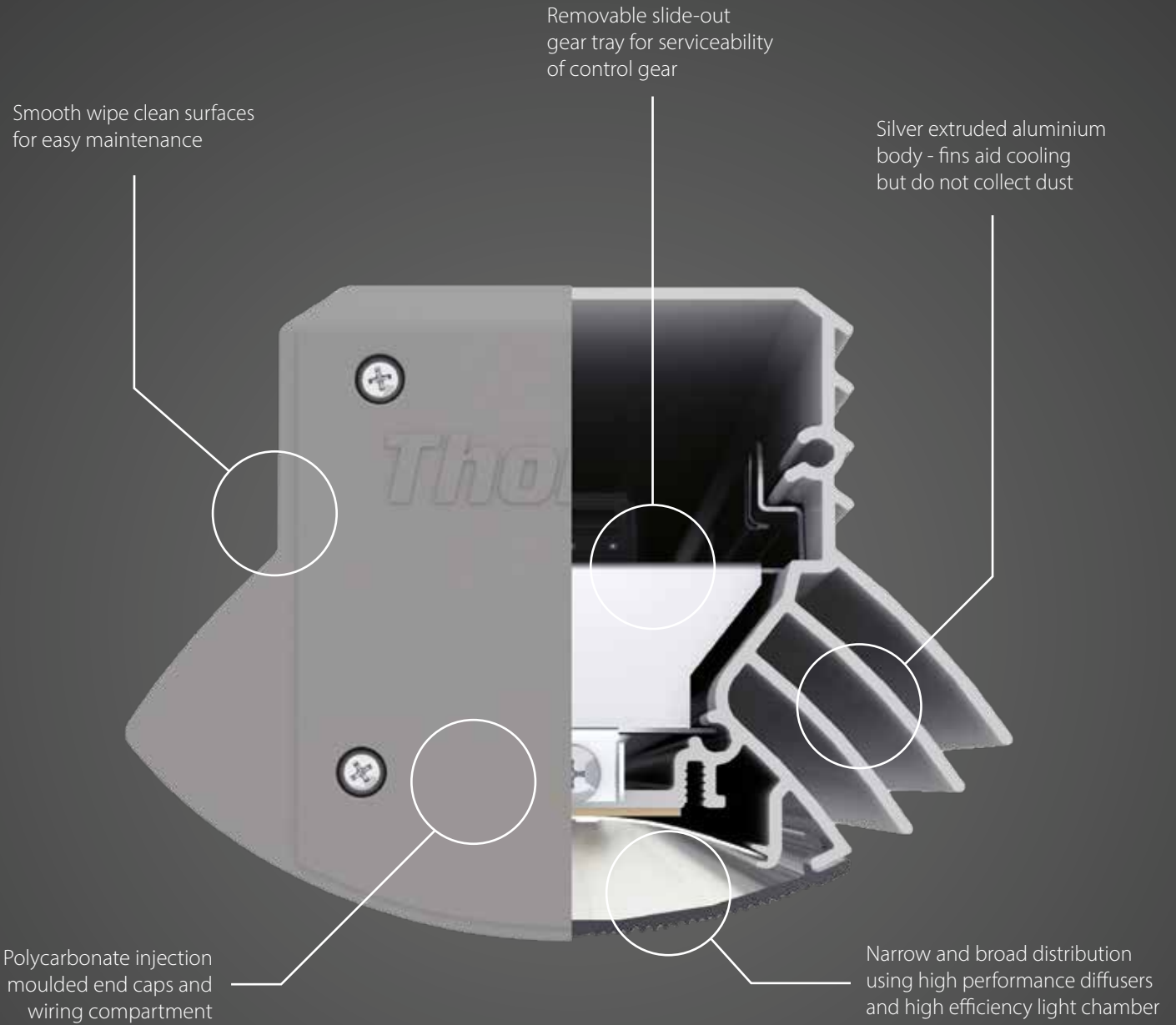
NOTE: High Level Smart versions do not comply with DIN EN 18032 Part 3 VDE 0710 Part 13 or IK10++ impact standards

AMBIENT OPERATING TEMPERATURES

LED	STANDARD/SMART			EMERGENCY	
	MINIMUM	MAXIMUM 100K HOUR LIFE	MAXIMUM 50K HOUR LIFE	MINIMUM	MAXIMUM
126W	-20°C	40°C	50°C	-	-
189W	-20°C	35°C	45°C	-	-
252W	-20°C	35°C	45°C	-	-
8W	-	-	-	5°C	40°C

For ambient temperatures below the stated minimum contact the Thorlux Technical department

SOLOW LED




INSTALLATION

3 SIMPLE STEPS

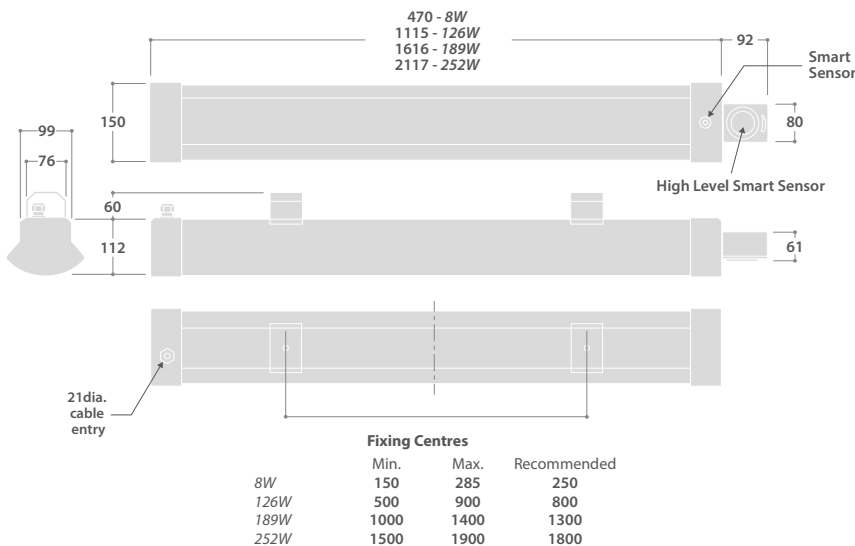
- 1 INSTALL MOUNTING BRACKETS
- 2 LUMINAIRE CLIPS IN
- 3 CONNECT TO SUPPLY



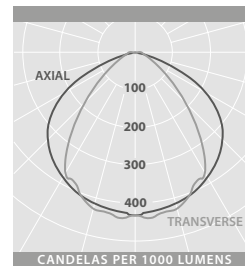
ACCESSORIES

DESCRIPTION	CAT. No.
 Mounting bracket locking kit to comply with DIN EN 18032 Part 3 VDE 0710 Part 13 (One kit required per luminaire)	SWL 15376

DIMENSIONS

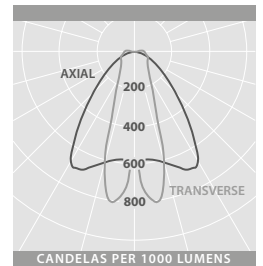


PHOTOMETRIC GUIDE



BROAD DISTRIBUTION

Luminaire Lumen Output:
126W = 19770lm
189W = 29655lm
252W = 39540lm



NARROW DISTRIBUTION

Luminaire Lumen Output:
126W = 18830lm
189W = 28245lm
252W = 37660lm