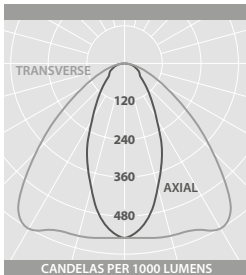


G4 SURFACE

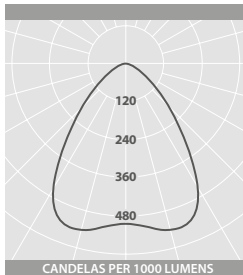


PHOTOMETRIC GUIDE



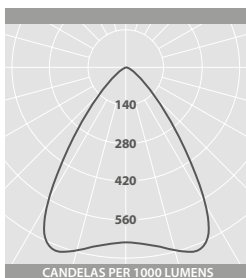
CORRIDOR

Luminaire Lumen Output
12W = 1555lm
26W = 2885lm



GENERAL AREA

Luminaire Lumen Output
12W = 1645lm
26W = 3050lm



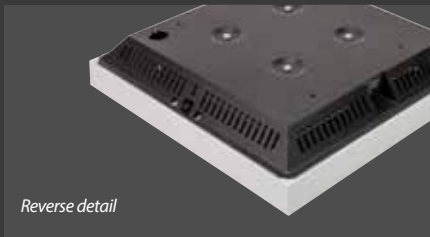
LOW GLARE LENS

Luminaire Lumen Output
12W = 850lm
26W = 1575lm

PERFORMANCE GUIDE

Typical task area illuminance assuming an open area with good reflection factors, 0.85 maintenance factor and a 2.65 metre ceiling height.

	LED	SPACING (Metres)	LUX AVERAGE 70/50/20	LUX AVERAGE 80/60/30
CORRIDOR LENS	12W	4.2	110	120
		5.4	90	100
	26W	4.2	200	230
		5.4	160	180
AREA LENS	12W	1.8 x 2.4	340	380
		2.4 x 2.4	270	310
		2.4 x 3.0	220	250
	26W	3.0 x 3.0	180	210
		1.8 x 2.4	620	700
		2.4 x 2.4	500	570
LOW GLARE LENS	12W	2.4 x 3.0	400	460
		3.0 x 3.0	340	380
		1.8 x 2.4	180	200
	26W	2.4 x 2.4	150	160
		2.4 x 3.0	120	130
		3.0 x 3.0	100	110



SQUARE LED SURFACE DOWNLIGHTERS



SPECIFICATION

- Steel body finished black
- Steel bezel finished light textured silver (RAL 9006)
- Die-cast heat sink with through airflow for thermal management
- Injection moulded reflector
- Choice of optics optimised for general area, corridor and low glare (VDT)
- Smart versions with integral intelligent lighting control
- SmartScan wireless technology removes the need for control cabling. Ideal for retro-fit
- Integral LED driver
- Fitted with 4000K LEDs

SmartScan Configurations



Find out more at www.thorlux.com/smartsan

RANGE

	LED	CORRIDOR	GENERAL AREA	LOW GLARE	APPROX. kg	CIRCUIT
SMART	26W	GF 19167	GF 19170	GF 19173	2.8	D/SS
STANDARD	12W	GF 19168	GF 19171	GF 19174	2.7	L/A
	26W	GF 19169	GF 19172	GF 19175	2.7	L/A

CIRCUIT TYPE - suffix catalogue number with:

SMART D - Smart / SS - SmartScan

STANDARD L - non-dimming (LED) / A - dimming (DALI) e.g. **GF 19167SS** etc.

EMERGENCY VERSION - prefix catalogue number with:

EGF - Emergency (Not available when selecting the 'SS' suffix)

TGF - AutoTest

WGF - SmartScan (Only available when selecting the 'SS' suffix) e.g. **WGF 19167SS** etc.

Add 0.3kg to weights listed.

LED CHARACTERISTICS

CRI	80+
COLOUR TEMPERATURE	4000K
RATED LIFE (HOURS)	100K - L80/B10
PROTECTION	LUX GUARD
DRIVER EFFICIENCY	>85%
REPLACEABLE	YES
POWER FACTOR	>0.9
LL/CW	109.7

For LED characteristics explanation see www.thorlux.com/led-guide

DIMENSIONS

