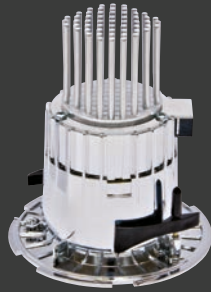


1

Body Range



LED version



- 1 LED Downlighter Power Unit for Emergency, AutoTest and Scanlight AT versions
- 2 Remote Driver for standard versions

2

Bezel Range



White bezel



White bezel with drop glass

3

Accessory Range



Clear polycarbonate cone



Clear polycarbonate halo



Blue polycarbonate halo



IP44 - Clear glass panel



IP44 - Frosted glass panel



Polycarbonate prismatic lens

RECESSED LOW WATTAGE LED DOWNLIGHTERS WITH REMOTE CONTROL GEAR

IP20 IP44 BELOW CEILING (IP44 versions only) UK CA CE LED

SPECIFICATION

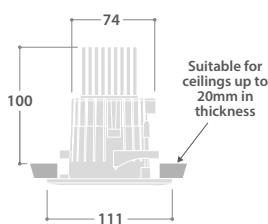
- High pressure die-cast bezel finished full polyester non-yellowing satin white (RAL 9016)
- Injection moulded polycarbonate body housing
- Remote phosphor mixing chamber
- Wide range of easy-fit accessories
- One size ceiling cut-out for all versions
- Supplied with remote gear unit fitted with 2m lead
- Fitted with 4000K LEDs

LED CHARACTERISTICS

| | |
|--------------------|-----------------------|
| CRI | 80+ |
| COLOUR TEMPERATURE | 4000K |
| RATED LIFE (HOURS) | 100K - L90/B10 |
| PROTECTION | LED PROTECT |
| DRIVER EFFICIENCY | >85% |
| REPLACEABLE | YES |
| POWER FACTOR | >0.9 |
| LL/CW | 85.7 |

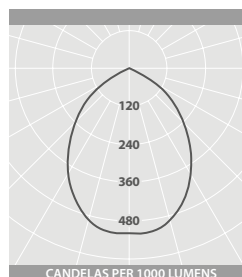
For LED characteristics explanation see www.thorlux.com/led-guide

DIMENSIONS



Cut out - 89 dia.
Minimum void depth
for emergency and AutoTest
versions - 165

PHOTOMETRIC GUIDE



WHITE BEZEL

Luminaire Lumen Output
6W = 600lm
12W = 1190lm

ORDERING

Order by number:

1. Body with LEDs e.g. **GU 15406**
2. Bezel type and finish e.g. **GU 14176W**
3. Accessory type e.g. **GU 13675**

EXAMPLE

6W LED with white bezel and clear polycarbonate cone accessory: **GU 15406/GU 14176W/GU 13675**

1. BODY RANGE - including LEDs

| LED | CAT. No. | APPROX. kg | CIRCUIT |
|-----|-----------------|------------|---------|
| 6W | GU 15406 | 0.5 | L/A |
| 12W | GU 15407 | 0.5 | L/A |

CIRCUIT TYPE - suffix catalogue number with:

L - non-dimming / **A** - dimming (DALI)
e.g. **GU 15406L** etc.

EMERGENCY VERSION - prefix catalogue number with:

EGU - Emergency / **TGU** - AutoTest e.g. **EGU 15406L** etc.
Add 1kg to weights listed.

2. BEZEL RANGE

| DESCRIPTION | CAT. No. | APPROX. kg |
|-------------------------------------------------|-------------------|------------|
| White bezel | GU 14176W | 0.04 |
| White bezel with drop glass | GU 14177W | 0.10 |
| White bezel - emergency version | EGU 14176W | 0.04 |
| White bezel with drop glass - emergency version | EGU 14177W | 0.10 |

3. ACCESSORY RANGE

| DESCRIPTION | CAT. No. | APPROX. kg |
|------------------------------|-----------------|------------|
| Clear polycarbonate cone | GU 13675 | 0.01 |
| Clear polycarbonate halo | GU 13676 | 0.02 |
| Blue polycarbonate halo | GU 13677 | 0.02 |
| IP44 - Clear glass panel | GU 13678 | 0.03 |
| IP44 - Frosted glass panel | GU 13679 | 0.03 |
| Polycarbonate prismatic lens | GU 13681 | 0.01 |