

# FIREFLY : LR

## STANDARD & AREA VERSIONS

The ECO Power Pack is hinged allowing it to be passed through cut-outs as small as 98mm diameter and into void depths as shallow as 115mm.

98mm

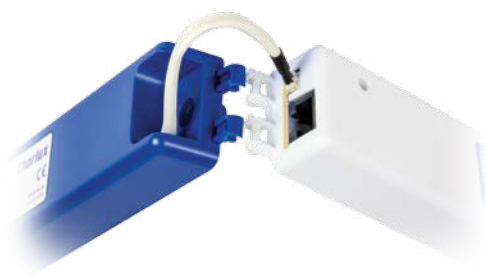
Minimum cut-out diameter

115mm

Minimum void depth



Terminals suitable for 1.5mm<sup>2</sup> looped cable.  
**NOTE:** Firefly : LR is a class II Luminaire.  
 Earth connection provided for looping only.

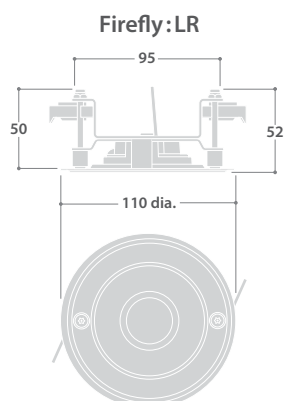


Snap-fit battery pack for fast replacement.  
 End of life SmartScan batteries can be returned to Thorlux for recycling.

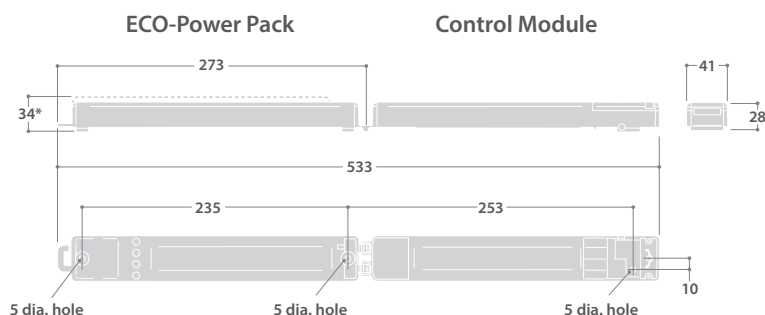


Strain relief incorporated into lid of wiring compartment.

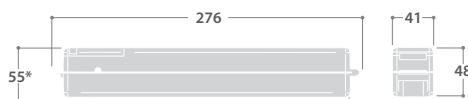
## DIMENSIONS



Hole size cut-out = 98 dia.  
 Minimum void depth (when passing Control Module and ECO-Power Pack through cut-out) = 115mm



### Control Module and ECO-Power Pack Combined



\* Emergency versions only

Control Module and ECO-Power Pack are articulated for easy placement through a small cut hole. The two items may be clipped on top of each other for space saving.

# FIREFLY : LR STANDARD & AREA VERSIONS



Standard version



Area Version

Control Module and  
ECO-Power Pack



## EMERGENCY LUMINAIRES FOR RECESSED MOUNTING WITH SMARTSCAN WIRELESS COMMUNICATION

IP65 DOWNLIGHTER  
(BELOW CEILING)

IP40 DOWNLIGHTER  
(ABOVE CEILING)

IP20 CONTROL  
MODULE

CE

LED

SmartScan

### SPECIFICATION

- Thermally conductive nylon body, polycarbonate bezel finished white (RAL9016)
- Impact-resistant and ligature-resistant
- Three hour, non-maintained emergency operation
- Stand-alone self-test and full SmartScan wireless communication compatible
- May be positioned for maximum effect
- Reliable LED technology
- Low standby power consumption (1.7W total)
- Status indicator shows operational condition
- Superb photometric performance
- Easily replaceable Nickel Metal Hydride (NiMH) ECO-Power Pack battery
- Tamper-resistant pin Torx screw fixings (Requires T20 tool - see Accessories table)

At Platform 1 SmartScan emergency luminaires may self-test at any time. Consequently, caution should be exercised in situations where this may be inconvenient (such as hotel rooms or hospital wards). At Platform 2 specific testing times can be set via the SmartScan website (SmartScan Gateway required).

## RANGE

LED POWER	AREA CAT. No.	STANDARD CAT. No.	APPROX. kg	TYPE
SmartScan 3W	WFF 18301	WFF 18300	0.6	Non-maintained
AutoTest 3W	TFF 18301	TFF 18300	0.6	Non-maintained
Emergency 2W	EFF 18301	EFF 18300	0.6	Non-maintained

Can be supplied with pre-fitted 3m lead for connection into Thorlux Lighting Cable Management:

For connection into recessed Smart 6-pole installations add suffix 'TEE' (see [www.thorlux.com/controls](http://www.thorlux.com/controls))

For connection into recessed SmartScan

3-pole installations add suffix 'TEE3'

(see [www.thorlux.com/controls](http://www.thorlux.com/controls))

e.g. WFF 18301TEE3 etc.



## SPARES

DESCRIPTION	CAT. No.	APPROX. kg
3W ECO-Power Pack battery	PP 17402	0.33
2W ECO-Power Pack battery	PP 17399	0.40

End of life SmartScan batteries can be returned to Thorlux for recycling.

## ACCESSORY

DESCRIPTION	CAT. No.
T-bar mounting bracket for Control Module and ECO-Power Pack	SLA 13101
T20 pin Torx bit (Suitable for magnetic bit holder)	KEY 16975

### SmartScan Wireless Standards Compliance:

Europe: EN 300 220-1 V2.4.1 / EN 301 489-3 V1.6.1

Australasia: ACMA 2014 Radio Communication Standard 2014

Thorlux Patented Wireless Technology - GB2575724



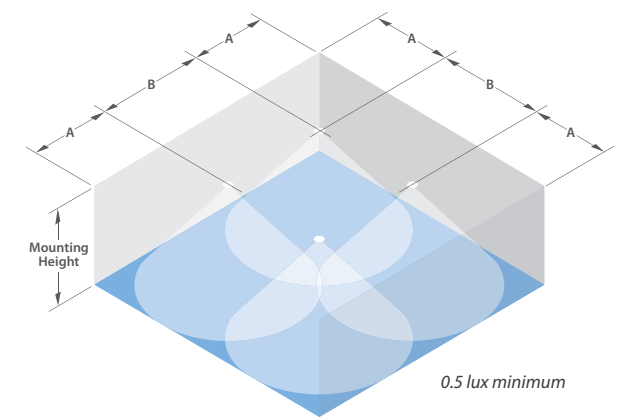
\* SmartScan versions only

# FIREFLY : LR

## STANDARD & AREA VERSIONS

### EMERGENCY LIGHTING PERFORMANCE GUIDE

TYPICAL SPACING FOR OPEN AREAS (STANDARD VERSION)

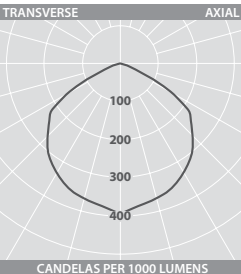


SPACING TABLE

MOUNTING HEIGHT (m)	3W		2W	
	A (m)	B (m)	A (m)	B (m)
2.0	3.5	7.3	3.3	7.1
2.5	3.8	8.6	3.7	8.2
3.0	4.3	9.6	4.1	9.3
3.5	4.7	10.6	4.4	10.2
4.0	4.9	11.6	4.6	11.2

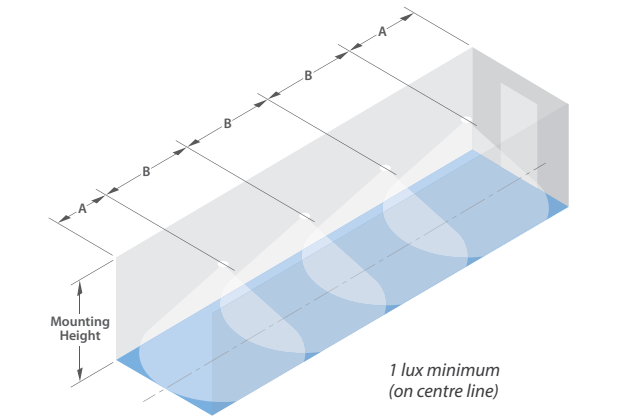
Maintenance factor 0.90

PHOTOMETRIC GUIDE



Luminaire Lumen Output:  
3W = 265 lm  
2W = 210 lm

TYPICAL SPACING FOR CORRIDORS (STANDARD VERSION)

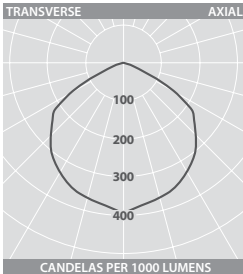


SPACING TABLE

MOUNTING HEIGHT (m)	3W		2W	
	A (m)	B (m)	A (m)	B (m)
2.0	3.4	8.2	3.2	7.9
2.5	3.9	9.5	3.4	9.1
3.0	4.2	10.6	3.7	10.0
3.5	4.3	11.5	3.9	10.6
4.0	4.4	12.0	4.0	11.1

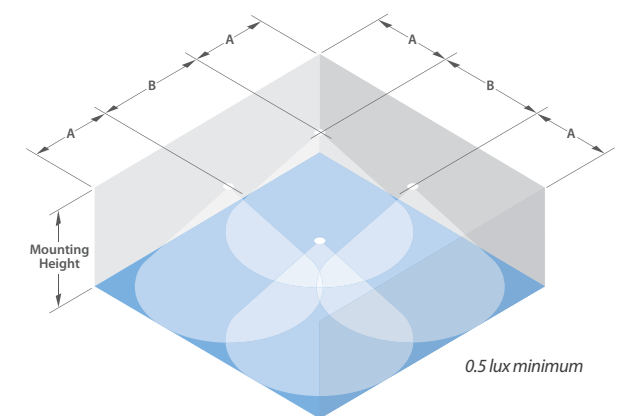
Maintenance factor 0.90

PHOTOMETRIC GUIDE



Luminaire Lumen Output:  
3W = 265 lm  
2W = 210 lm

TYPICAL SPACING FOR AREA LENS

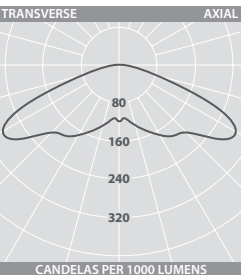


SPACING TABLE

MOUNTING HEIGHT (m)	3W		2W	
	A (m)	B (m)	A (m)	B (m)
2.0	4.3	9.6	4.1	9.2
2.5	4.7	11.0	4.5	10.5
3.0	5.3	12.2	5.1	11.7
3.5	5.8	13.5	5.5	12.8
4.0	6.2	14.5	5.7	13.8

Maintenance factor 0.90

PHOTOMETRIC GUIDE



Luminaire Lumen Output:  
3W = 270 lm  
2W = 215 lm