

FLEXBEAM

EASY INSTALLATION

Supplied with easily adjustable 3m wire suspensions and fitted 3.5m clear supply lead

CHOICE OF COLOUR FINISHES

Three colour choices available as standard, other colours available to special order

LOW GLARE OPTICS

High performance nanoprism optics with a choice of glare controlling reflectors for optimum user comfort

UPLIGHT COMPONENT

Versions available with uplight component

SOUND ABSORBING BODY

Manufactured from fire-retardant sound absorbing polyester fibre designed to improve voice and audio clarity

LUMINAIRE CONFIGURATOR

EMERGENCY TYPE ♦	PRODUCT CODE	WATTAGE	LENGTH	COLOUR	REFLECTOR	CONTROL TYPE
Without Uplight						
W SmartScan*	FM Flexbeam	18 18W	L 2100	WH Marble White	W White	S SmartScan
T AutoTest**		28 28W		GY Charcoal Grey	M Metallised	D Smart
E Emergency**				BL Black	B Black	A Dimming (DALI)
						L Non-dimming
With Uplight						
W SmartScan*	FM Flexbeam	27 27W	L 2100	WH Marble White	W White	S SmartScan
T AutoTest**		45 45W		GY Charcoal Grey	M Metallised	D Smart
E Emergency**				BL Black	B Black	A Dimming (DALI)
						L Non-dimming
E.g. WFM27LGYWS						
W SmartScan	FM Flexbeam	27 27W	L 2100	GY Charcoal Grey	W White	S SmartScan

♦ Optional, leave blank if emergency is not required

* Only available with S Control Type

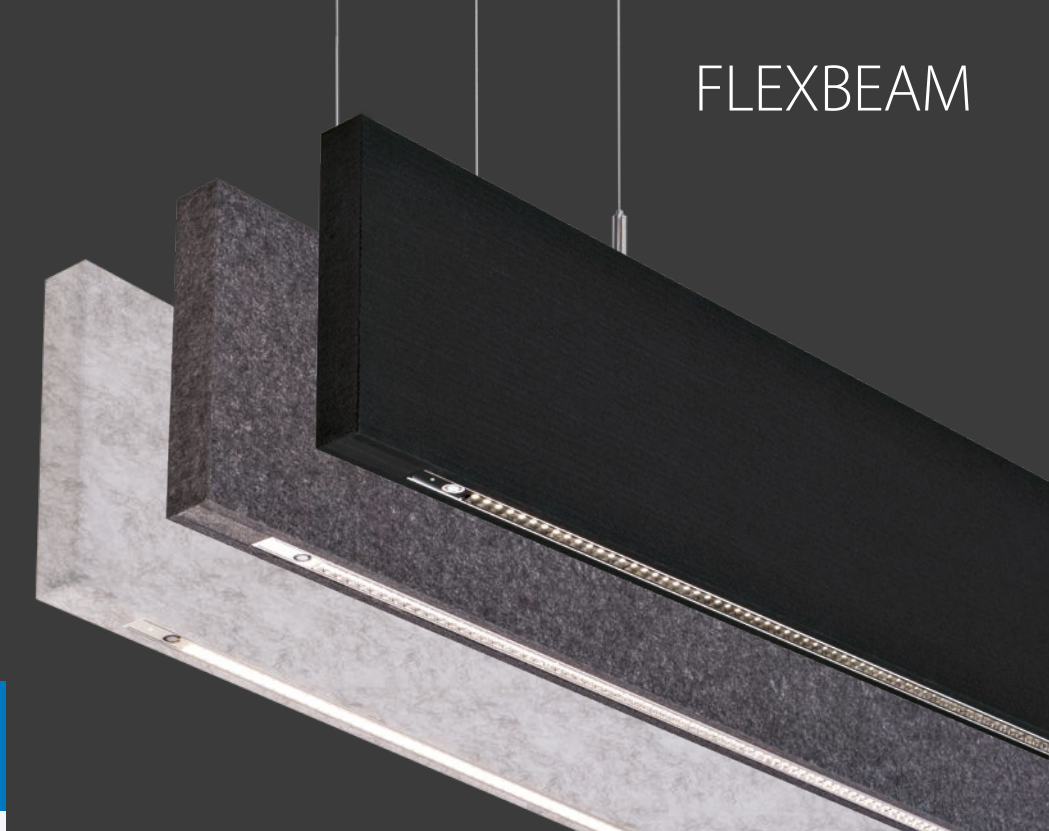
** Not available with S Control Type

WEIGHTS

VERSION	APPROX. kg	EMERGENCY
Without Uplight	6.6	Add 0.3kg to weight listed.
With Uplight	7.0	Add 0.1kg to weight listed.

PLAIN BAFFLE RANGE

LENGTH	COLOUR	CAT No.
2100	Marble White	FM 20059
2100	Charcoal Grey	FM 20060
2100	Black	FM 20061



SUSPENDED NARROW PROFILE LINEAR LUMINAIRES WITH ACOUSTIC ATTENUATION



SPECIFICATION

- Steel frame and gear housing
- High performance sound absorbing, fire-retardant, polyester fibre outer body
- Choice of marble white, charcoal grey or black finish as standard. Other colours available to special order
- Extruded aluminium light engine
- Custom optical system combining a reflector, collimator and nanoprism lens for each LED
- Black 'invisible' light source, metalised low glare or white reflector options
- Versions with optional uplight component
- Supplied with easily adjustable 3m wire suspensions and fitted 3.5m clear supply lead
- Low glare optics for EN12464-1 / LG7 (<math><1500\text{ cd/m}^2\text{ @ }65^\circ</math>)
- Fitted with 4000K LEDs

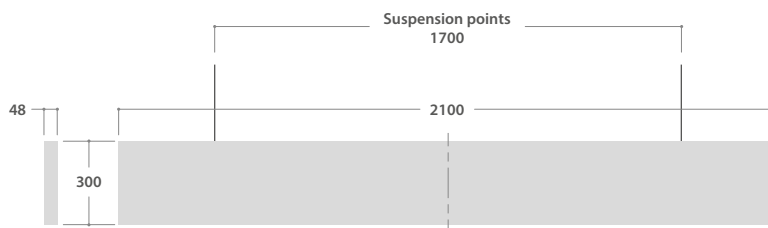
LED CHARACTERISTICS

CRI	80+
COLOUR TEMPERATURE	4000K
RATED LIFE (HOURS)	100K - L80/B10
PROTECTION	-
DRIVER EFFICIENCY	>85%
REPLACEABLE	NO
POWER FACTOR	>0.93

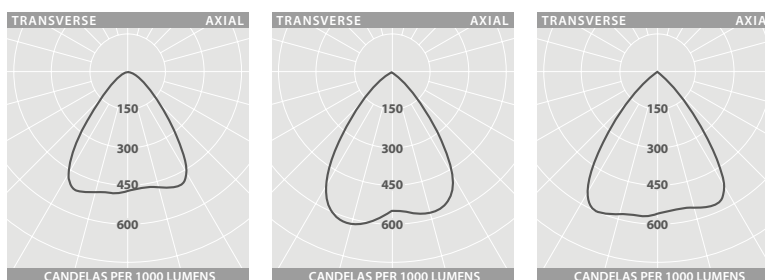
LL/CW 123.3

For LED characteristics explanation see www.thorlux.com/led-guide

DIMENSIONS



PHOTOMETRIC GUIDE



WHITE

Luminaire Lumen Output:

Without Uplight
18W = 2500 lm
28W = 3665 lm

With Uplight
27W = 3540 lm
45W = 5490 lm

METALLISED

Luminaire Lumen Output:

Without Uplight
18W = 2590 lm
28W = 3795 lm

With Uplight
27W = 3645 lm
45W = 5580 lm

BLACK

Luminaire Lumen Output:

Without Uplight
18W = 1850 lm
28W = 2715 lm

With Uplight
27W = 2920 lm
45W = 4490 lm

SmartScan Configurations



Find out more at www.thorlux.com/smartsan