



Prismalette 360

Vandal-resistant circular luminaires



Prismalette 360

Intelligent, compact, vandal-resistant luminaires

The Prismalette 360 is a compact vandal-resistant circular bulkhead with a high efficiency satin polycarbonate cover and strong high-pressure die-cast aluminium body. With SmartScan Radar, microwave presence detector, photocell and emergency versions the Prismalette 360 is suitable for a wide range of internal and external applications.

IP66

IK10++

UK
CA

CE

LED

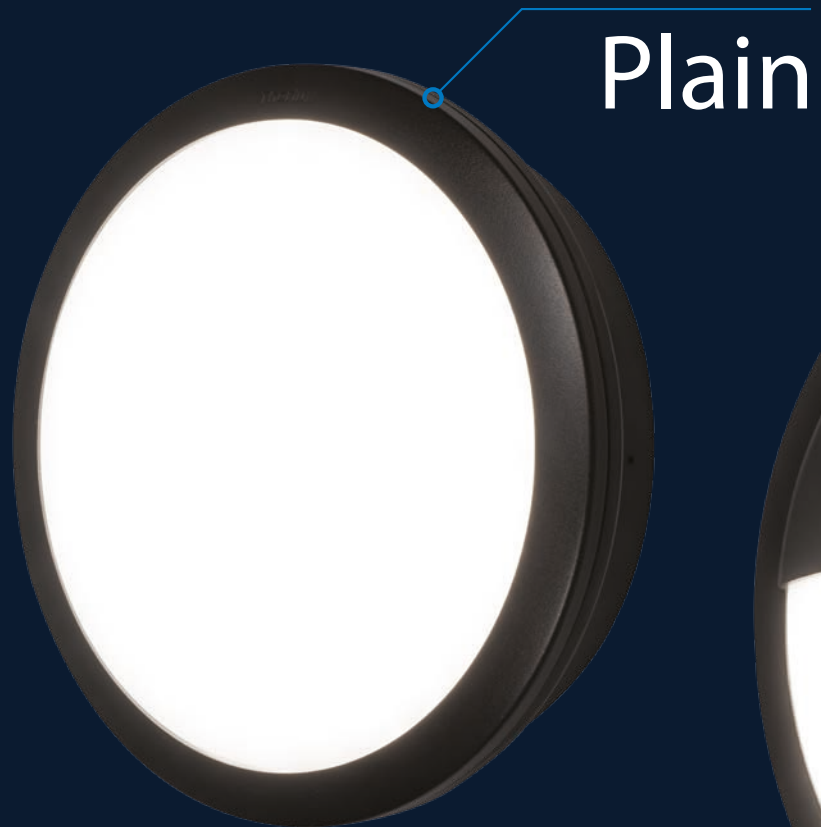


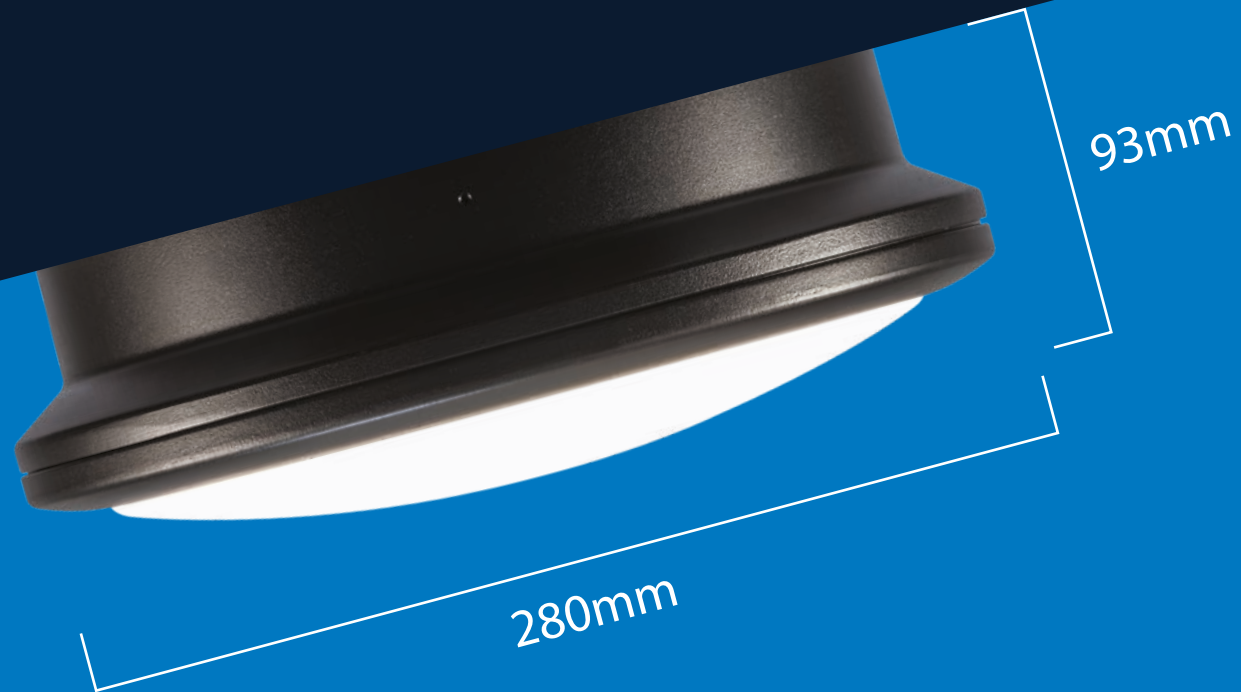
Two design options. Plain or hooded.

The Prismalette 360 is available in two versions, both featuring a homogeneously lit diffuser.

The plain version, for wall or ceiling mounting, provides a 360° light distribution. This version can be semi-recessed using an optional recessing bezel which may be preferable for aesthetics where a shallower install is required, or to match an existing style.

The wall mounted hooded version is designed to reduce obtrusive and nuisance light in residential applications.





Small but mighty

Everything you need in a compact body

Due to advancements in LED technology the Prismalette 360 is small whilst still offering the output and benefits you would expect from a Thorlux external bulkhead including; SmartScan Radar, microwave presence detector, photocell, emergency and conduit entry.

Hidden cover screws

The aluminium bezel fixes over the cover screws creating a clean screw free appearance as well as reducing the potential for vandalism. The bezel twists and locks into place and is retained by a 2mm pin hex security screw.

Removable LED module

The Prismalette 360 is supplied with a one piece LED module which simplifies installation and maintenance. The module is a pre-assembled unit which includes the LED PCB, control gear and any emergency or control components and a polycarbonate cover.

During installation, the cast aluminium body is mounted during 'first fix' and the LED module added during 'second fix' by simply plugging in the mains connector and securing the four captive 3mm pin hex security screws.





Lighting control without compromise

Adding lighting control to a luminaire often requires the addition of a sensor which can reduce the structural integrity of a luminaire. Using the latest high frequency sensor technology SmartScan Radar is mounted directly to the LED light engine which is integral to the luminaire therefore protecting these sensitive components. This is ideal for applications where the luminaire aesthetics and impact rating are important factors.

Find out more about SmartScan Radar at

www.thorlux.com/smartscan-radar

SmartScan Radar offers energy saving through presence detection and daylight control, user control via SmartScan scene setting or timed override from the SmartScan website.

SmartScan Radar Benefits

- Radar presence detectors are integral to the luminaire, providing improved impact-resistance and aesthetics.
- Unique 24GHz sensor with increased sensitivity to small movements whilst being less prone to false detection than traditional 'microwave' technology.
- Fully programmable light levels, detection range (sensitivity), time delays and security levels via the SmartScan Programmer.
- New advanced SmartScan technology allows photocell control with the LED lamp on or off.
- Full status monitoring via the SmartScan website.
- Automatic testing and record keeping of emergency luminaires via the SmartScan website.

No weak points here IK10++ presence detection

SmartScan Radar sensors are located inside the luminaire and therefore protected by the 3mm thick polycarbonate cover. This makes them particularly suited to areas where vandalism is likely but SmartScan features are still desired.



Designed for tough environments

Every aspect of the Prismalette 360 has been designed to be resilient. Protection by Lux Guard, Thorlux patented current sharing technology, means that if an LED fails, the neighbouring LEDs increase in brightness slightly to compensate.

Find out more about Lux Guard at www.thorlux.com/led-guide



Tamper-resistant retaining screw

Prevents the bezel being easily removed.

Cover bezel

A strong high-pressure die-cast LM6 aluminium bezel hides cover screws and deters curious vandalism.

Impact-resistant cover

Shallow depth 3mm thick UV stabilised satin polycarbonate cover rated IK10++.





LED PCB

Replaceable LED PCBs and Thorlux patented Lux Guard LED protection technology.

Control gear

Fully replaceable control gear with an option for SmartScan Emergency, AutoTest and integral emergency to operate for three hours in the event of power failure.

Die-cast aluminium body

A strong high-pressure die-cast LM6 aluminium body which is deep enough to accept conduit entry. Full polyester powder coated for a durable long lasting finish.

Silicone gasket

Long life thermally stable silicone gasket which will maintain the IP rating for the life of the luminaire.

Engineered for fast installation

4 simple steps

1



Fix body to mounting surface and install mains connector.

2



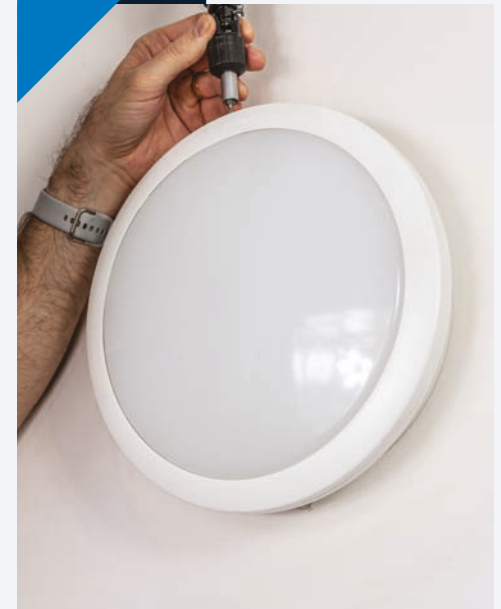
Connect mains connector to mains socket on the LED module.

3



Fix LED module using four captive screws.

4



Twist and lock bezel into place and secure with the locking screw.



Conduit made simple

Pre-marked drill points

Prismalette 360 installations may require conduit to offer additional safety and protection to cabling. The Prismalette 360 die-cast aluminium body is strong and long lasting and supplied with pre-marked drill points on the top, bottom and sides to simplify installation.



Fit and forget emergency solution

SmartScan Emergency luminaires are self-test by default and can operate on two platforms:

At Platform 1 all SmartScan emergency luminaires are stand-alone and each luminaire will self-test in a similar way to AutoTest luminaires. However, tests may be initiated and operational status retrieved by using the SmartScan Programmer.

At Platform 2, SmartScan emergency luminaires are linked to a Gateway which collects operational status information and transmits it to the web for viewing on any device suitable for internet browsing. Automatic emergency lighting test schedules can be configured on the SmartScan website to minimise disruption to the building's users.

Find out more about SmartScan Emergency at
www.thorlux.com/smartscan-emergency



Part of the Prismalette family

Prismalette has been the product of choice for many social housing providers for decades. With its long-lasting and strong die-cast aluminium body, high impact-resistant polycarbonate cover, vandal-resistance and reliable performance Prismalette is still a market leading luminaire.

Now incorporating the latest LED technology, new distribution options, SmartScan Radar wireless controls and SmartScan Emergency, Prismalette has evolved to meet the demand for innovative and energy efficient lighting solutions.



Prismalette



The Prismalette is a long established bulkhead for social housing applications. With its high impact, vandal-resistance and long life cast aluminium body it has been the product of choice for many providers in this sector for decades.

For more information please visit
www.thorlux.com/products/prismalette



Prismalette Pro



Prismalette Pro added lighting distributions to the range with wall and ceiling versions controlling the light ensuring it is distributed where needed, increasing spacings and reducing obtrusive light.

For more information please visit
www.thorlux.com/products/prismalette-pro

Range

VANDAL-RESISTANT CIRCULAR LUMINAIRES



SPECIFICATION

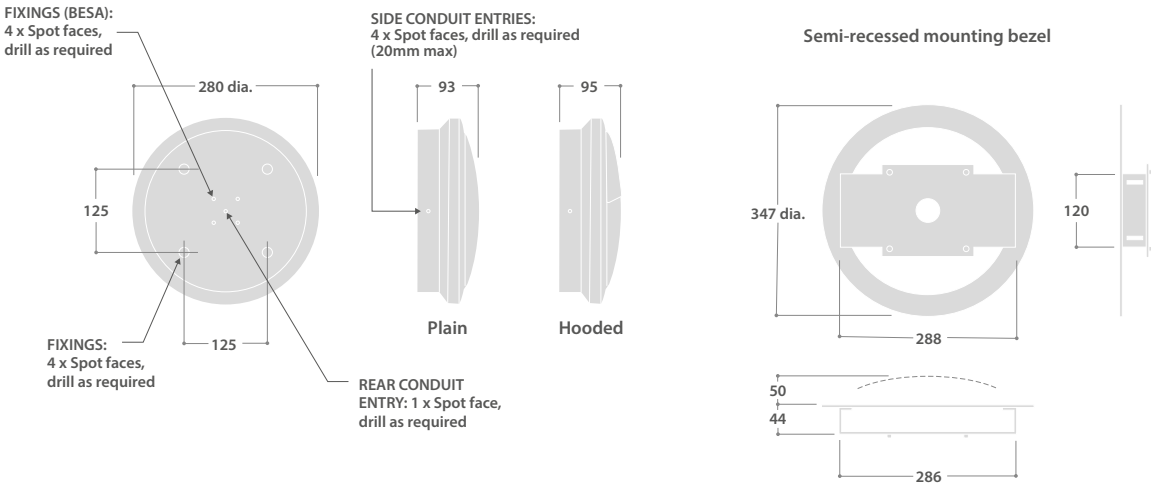
- Strong high-pressure die-cast LM6 aluminium body and bezel. Graphite or white full polyester powder finish options
- High efficiency fire-retardant satin polycarbonate diffuser
- Plain or hooded version options
- Tamper-resistant cover screws as standard
- Optional photocell control
- Bezel trim for semi-recessed mounting
- Complies with M.O.D. JSP482 Chapter 8 Document for 'Category C' areas
- SmartScan Radar versions with sensor discretely hidden behind the cover
- Microwave presence detector versions with stand-by light level feature
- Fitted with 4000K LEDs

SmartScan Configurations



Find out more at www.thorlux.com/smartsan

DIMENSIONS



LED CHARACTERISTICS

CRI	80+
COLOUR TEMPERATURE	4000K
RATED LIFE (HOURS)	100K - L80/B10
PROTECTION	LUX GUARD
DRIVER EFFICIENCY	>70%
REPLACEABLE	YES
POWER FACTOR	>0.9
LL/CW	118.2

For LED characteristics explanation see www.thorlux.com/led-auide

ACCESSORIES

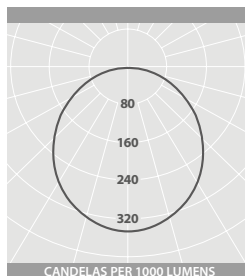
DESCRIPTION	CAT. NO.
Keys for tamper-resistant screws	PM 20095
Bezel for semi-recessed mounting - graphite	PM20094G2
Bezel for semi-recessed mounting - white	PM20094W9

WEIGHTS

VERSION	APPROX. kg	EMERGENCY
Plain	2.2	Add 0.3kg to weight listed.
Hooded	2.4	Add 0.1kg to weight listed.

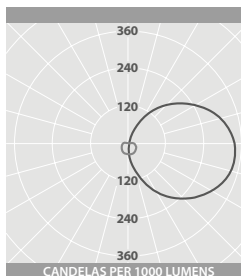
Range

PHOTOMETRIC GUIDE



PLAIN

Luminaire Lumen Output:
16W = 2245 lm



HOODED

Luminaire Lumen Output:
4W = 640 lm
8W = 1135 lm

CONFIGURATOR

EMERGENCY TYPE ♦	PRODUCT CODE	WATTAGE	COVER	PHOTOCELL	COLOUR	CONTROL TYPE
Plain Versions						
W SmartScan *	PM Prismalette 360	016 16W	P Plain	P Photocell ****	G Graphite	R SmartScan Radar
T AutoTest **				X No photocell	W White	M Microwave
E Emergency **						L Non-dimming
Hooded Versions						
W SmartScan *	PM Prismalette 360	004 4W	H Hooded	P Photocell ****	G Graphite	R SmartScan Radar
T AutoTest **		008 8W		X No photocell	W White	M Microwave ***
E Emergency **						L Non-dimming
E.g. WPM004HXGR						
W SmartScan	PM Prismalette 360	004 4W	H Hooded	X No photocell	G Graphite	R SmartScan Radar

♦ Optional, leave blank if emergency is not required

* Only available with R Control Type (Use with L / M Control Type available from April 2021)

** Not available with R Control Type

*** Not available with 4W versions

**** Not available with E Emergency Type or R / M Control Types



Designers, manufacturers and suppliers
of professional lighting systems

INDUSTRIAL LUMINAIRES
COMMERCIAL LUMINAIRES
FLOODLIGHTING LUMINAIRES
ARCHITECTURAL LUMINAIRES
HEALTHCARE LUMINAIRES
HAZARDOUS AREA LUMINAIRES
RETAIL AND DISPLAY LUMINAIRES
CONTROLS AND SYSTEMS

A DIVISION OF FW THORPE PLC

Thorlux Carbon Offsetting Project:
www.thorlux.com/trees

The information given in this catalogue is typical and must not be interpreted as a guarantee of individual product performance and/or characteristics. We reserve the right to alter specifications and designs without prior notice.

Thorlux Lighting
Merse Road
North Moons Moat
Redditch
Worcestershire
B98 9HH
England

T +44 (0)1527 583200
F +44 (0)1527 584177
E thorlux@thorlux.co.uk
W www.thorlux.com

Direct UK Sales Line: 01527 583222

Thorlux Lighting Ireland
Unit G6
Riverview Business Park
Nangor Road
Gallanstown
Dublin 12
Ireland

T +353 (0)1 460 4608
F +353 (0)1 460 4609
E thorlux@thorlux.ie
W www.thorlux.ie

Thorlux Lighting Deutschland
Ernst Gnoß Strasse 7
40219 Düsseldorf
Deutschland

T +49 (0)211 695 603-10
F +49 (0)211 695 603-11
E thorlux@thorlux.de
W www.thorlux.de

Thorlux Lighting Australasia Pty Ltd.
31 Cross Street
Brookvale
Sydney
NSW 2100
Australia

T 1300 04 32 32
T +61 (0)2 9907 1261
E thorlux@thorlux.com.au
W www.thorlux.com.au

Registered No. ABN 139 400 507

Thorlux Lighting LLC
Office 48
OneSpace - Building No. 3
Green Community
Dubai Investment Park 1
PO Box 33484
Dubai
United Arab Emirates

T +971 (0)2 656 5842
F +971 (0)2 622 4149
E sales@thorlux.ae
W www.thorlux.ae

