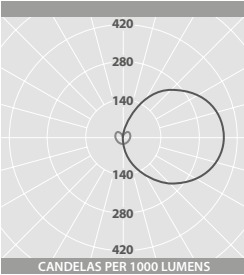




PHOTOMETRIC GUIDE

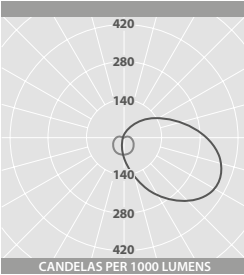


11/16W - PLAIN

Luminaire Lumen Output:  
11W = 1490lm  
16W = 2070lm

11/16W - PLAIN & GRILL

Luminaire Lumen Output:  
11W = 1285lm  
16W = 1795lm



15W - HOOD

Luminaire Lumen Output:  
15W = 1020lm

15W - HOOD & GRILL

Luminaire Lumen Output:  
15W = 855lm

OPTIONS

DESCRIPTION	SUFFIX	EXAMPLE
Photocell ●	PC	CT 19516LPC

● Not available with SmartScan Radar versions

ACCESSORIES

DESCRIPTION	CAT. No.
Tamper-resistant screw kit including key	CT 11699



Plain



Hood



Plain &amp; Grill



Hood &amp; Grill

## IP66 CIRCULAR LUMINAIRES



### SPECIFICATION

- Strong die-cast LM2 aluminium body and cover frame. Graphite, full polyester powder finish as standard
- Silver or white finish options
- High efficiency fire-retardant satin polycarbonate diffuser
- Choice of cover styles
- Complies with M.O.D. JSP482 Chapter 8 Document for 'Category C' areas
- Photocell option
- SmartScan wireless technology removes the need for control cabling. Ideal for retro-fit
- SmartScan Radar versions with sensor discretely hidden behind the cover
- Fitted with 4000K LEDs

### 11W/16W LED CHARACTERISTICS

CRI	80+
COLOUR TEMPERATURE	4000K
RATED LIFE (HOURS)	100K - L70/B10
PROTECTION	LUX GUARD
DRIVER EFFICIENCY	>80%
REPLACEABLE	YES
POWER FACTOR	>0.95
LL/CW	106.4

### 15W HOOD LED CHARACTERISTICS

CRI	80
COLOUR TEMPERATURE	4000K
RATED LIFE (HOURS)	100K - L70/B10
PROTECTION	LUX GUARD
DRIVER EFFICIENCY	>90%
REPLACEABLE	YES
POWER FACTOR	>0.95
LL/CW	56.7

For LED characteristics explanation see [www.thorlux.com/led-guide](http://www.thorlux.com/led-guide)

### RANGE

LED	PLAIN VERSION	HOOD VERSION	CIRCUIT	APPROX. kg	PLAIN & GRILL VERSION	HOOD & GRILL VERSION	CIRCUIT	APPROX. kg
11W	CT 19516		R/L	3.0	CT 19518		L	3.2
15W		CT 19015	L	3.0		CT 19016	L	3.2
16W	CT 19517		R/L	3.0	CT 19519		L	3.2

COLOUR OPTIONS - add suffix: **SV3** - Silver / **W9** - White e.g. **CT 19516RSV3** etc.

CIRCUIT TYPE - suffix catalogue number with:

**R** - SmartScan Radar / **L** - non-dimming e.g. **CT 19516R** etc.

SmartScan Radar add 0.1kg to weights listed.

EMERGENCY VERSION - prefix catalogue number with:

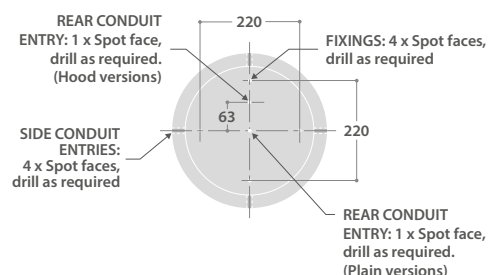
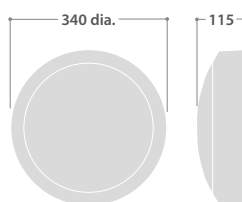
**ECT** - Emergency  
**TCT** - AutoTest (Not available when selecting the 'R' suffix)

**WCT** - SmartScan (11W and 16W versions only)

e.g. **ECT 19516R** etc.

Add 0.3kg to weights listed

### DIMENSIONS



### SmartScan Configurations



Find out more at [www.thorlux.com/smartscan](http://www.thorlux.com/smartscan)