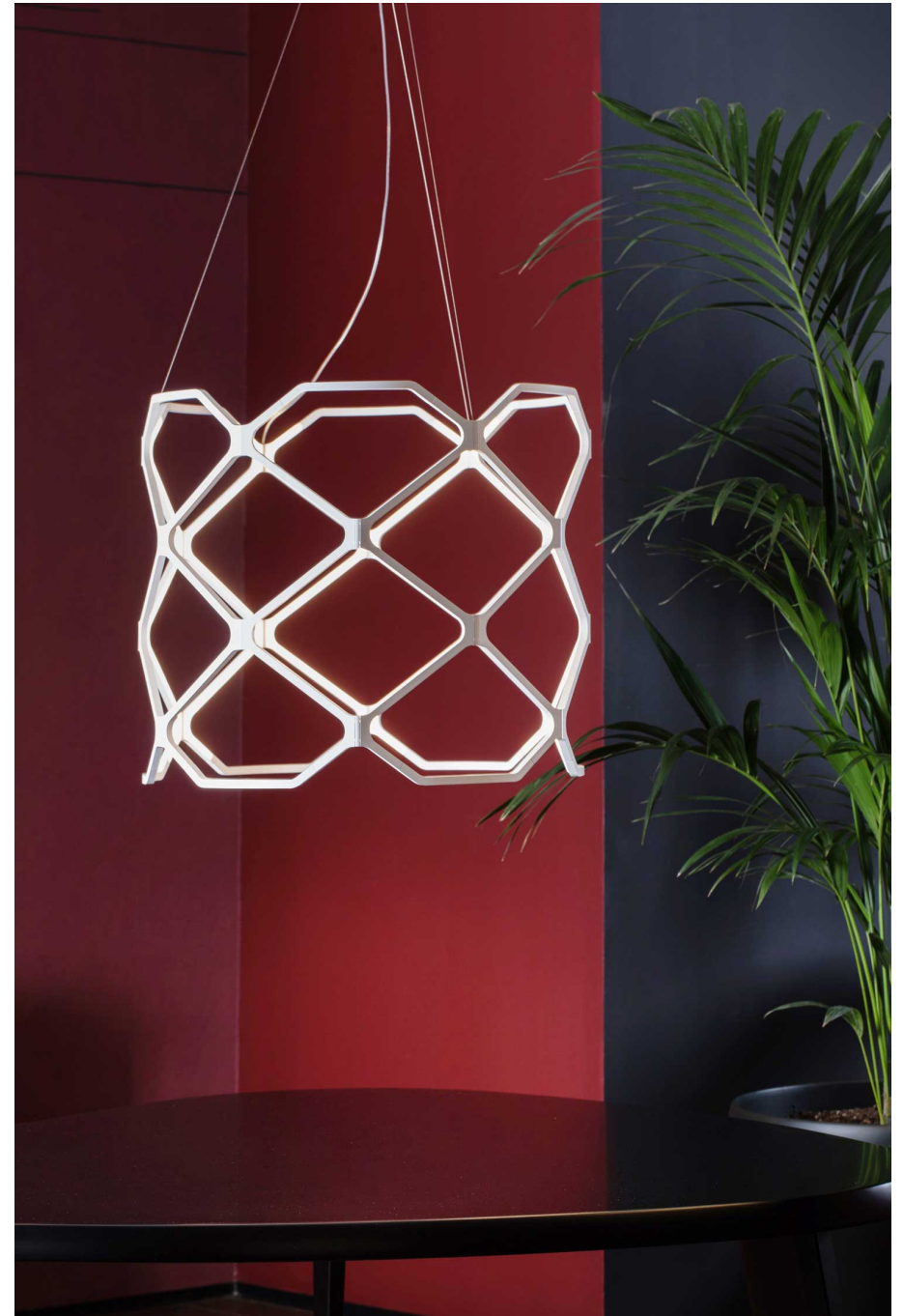


TITIA

Arihiro Miyake

Titia is a suspended swirl of light, 'I had in mind a lamp that would bring together the spirit of Christmas garlands and wooden merry-go-rounds,' summarises Arihiro Miyake. 'It's an old idea that I can at last bring to fruition thanks to the development of LED technology. A cluster of points of light are enclosed within a form that is as light as possible.' Titia's aim is to light a table in a diffuse and homogenous manner. One of its small technical specifications developed by NEMO for 2017. Titia is a delicate wire silhouette and is available in black or white.



LED

LAMPING

Source	LED board
Total power	90W
Emission	diffused
Switching	dimnable 1-10V
Tension	110 / 240 V
Color temperature	2700K
Luminous flux	3850lm (luminous output)
Typ cri	85
Energy class	A+
Notes	cable lenght 3m
Net lamp weight	2,5 Kg

Codes

TIT LNN 51
TIT LWW 51

Structure

black
white

PACKAGE

Package 01 67x67x32 cm / Gross weight: 4,5 Kg

Certificazioni

