

TUBES 2 WALL

Charles Kalpakian

Family of pendant, wall and ceiling lamps, with elements in extruded aluminium. Opal polycarbonate diffusers, for a warm and ambient lighting. Adjustable elements in the wall versions. Available also with dimmer push on the body of the lamp. Ceiling version with a 340° rotation for the ceiling fixed element while the other element is adjustable by 90°.



PUSH

LAMPING

Source	LED board
Total power	2x5,5W
Emission	orientable, spot
Switching	push on board
Tension	230V
Color temperature	2700K
Luminous flux	2x 135lm (luminous output)
Typ cri	80
Materials	aluminium
Notes	orientable on three axes, also available in 120V
Net lamp weight	0,45 Kg

Codes

TTB LWC 33

TTB LWW 33

TTB LNN 33

Structure

white / copper

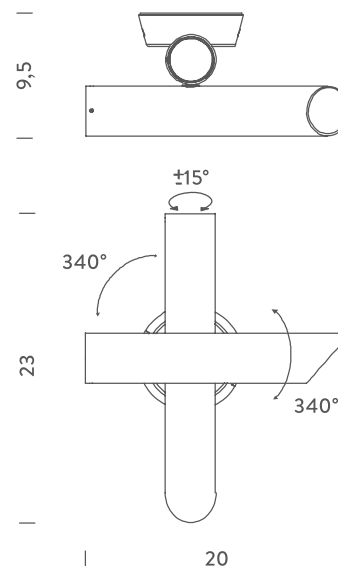
white/white

black/black

PACKAGE

Package 01 14x31x11 cm / Gross weight: 0,55 Kg

Certificazioni



TRIAC

LAMPING

Source	LED board
Total power	2x5,5W
Emission	orientable, spot
Switching	dimnable TRIAC
Tension	230V
Color temperature	2700K
Luminous flux	2x 135lm (luminous output)
Typ cri	80
Materials	aluminium
Notes	orientable on three axes, also available in 120V
Net lamp weight	0,45 Kg

Codes

TTB LWC 32

TTB LWW 32

TTB LNN 32

Structure

white / copper

white/white

black/black

PACKAGE

Package 01 14x31x11 cm / Gross weight: 0,55 Kg

Certificazioni

