

# Sortie

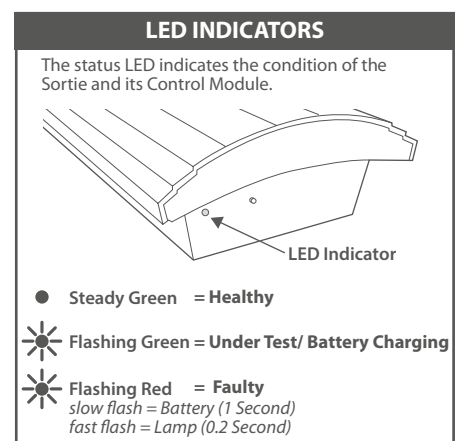
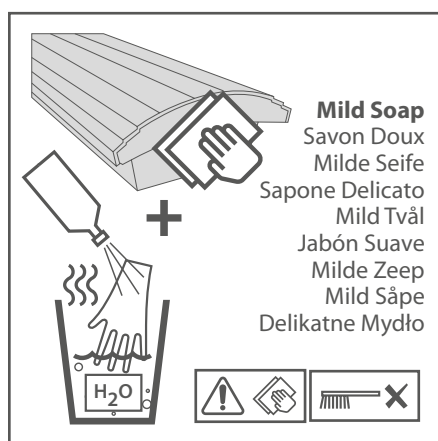
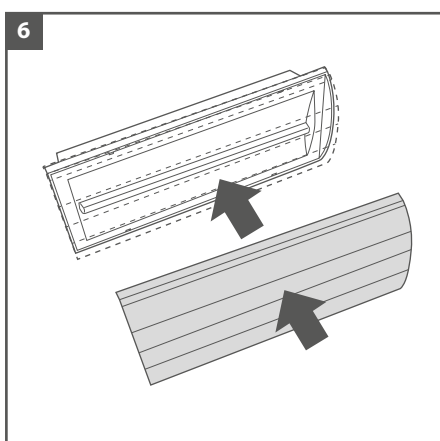
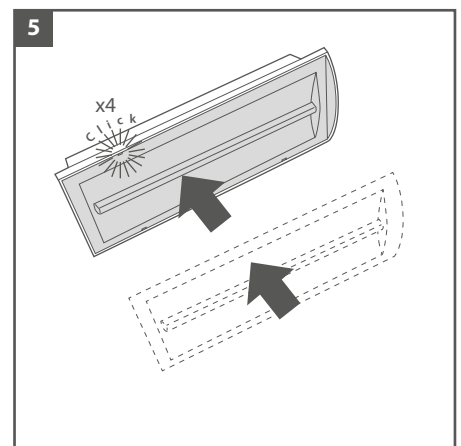
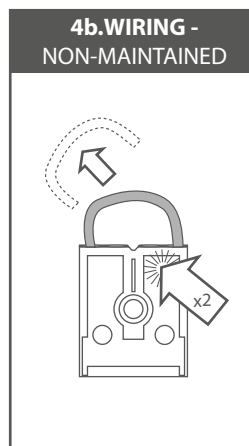
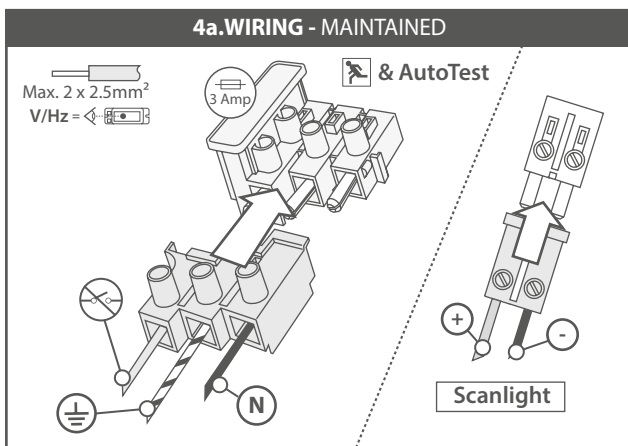
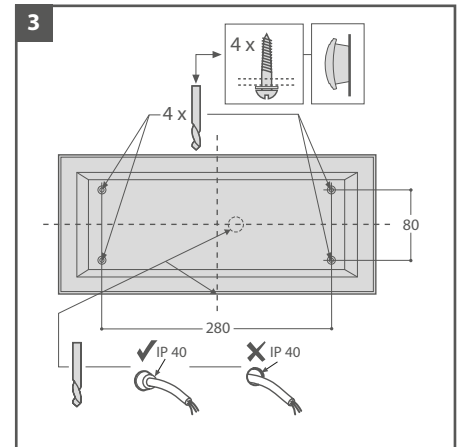
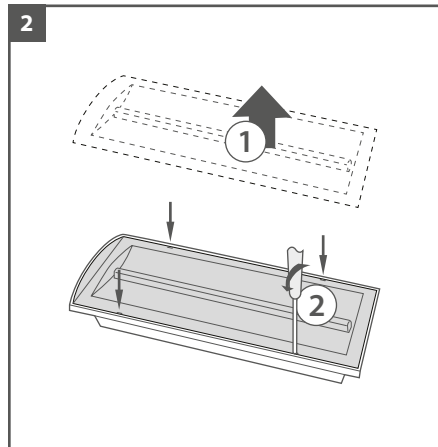
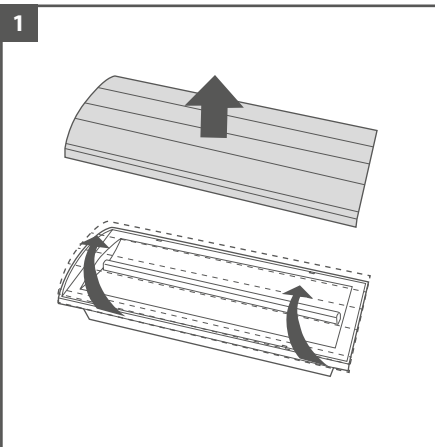
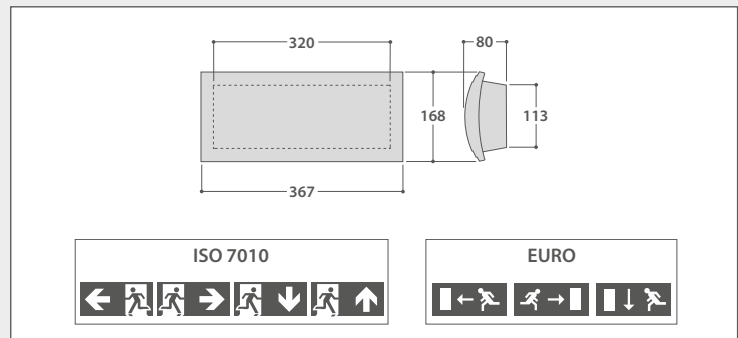
Class 1

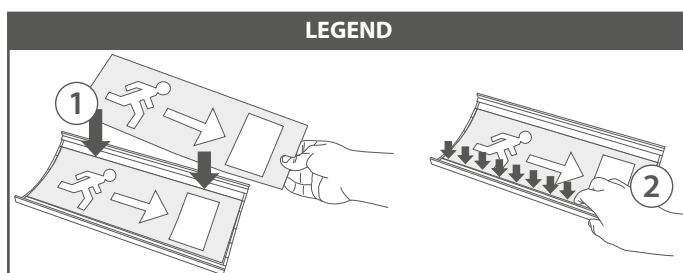
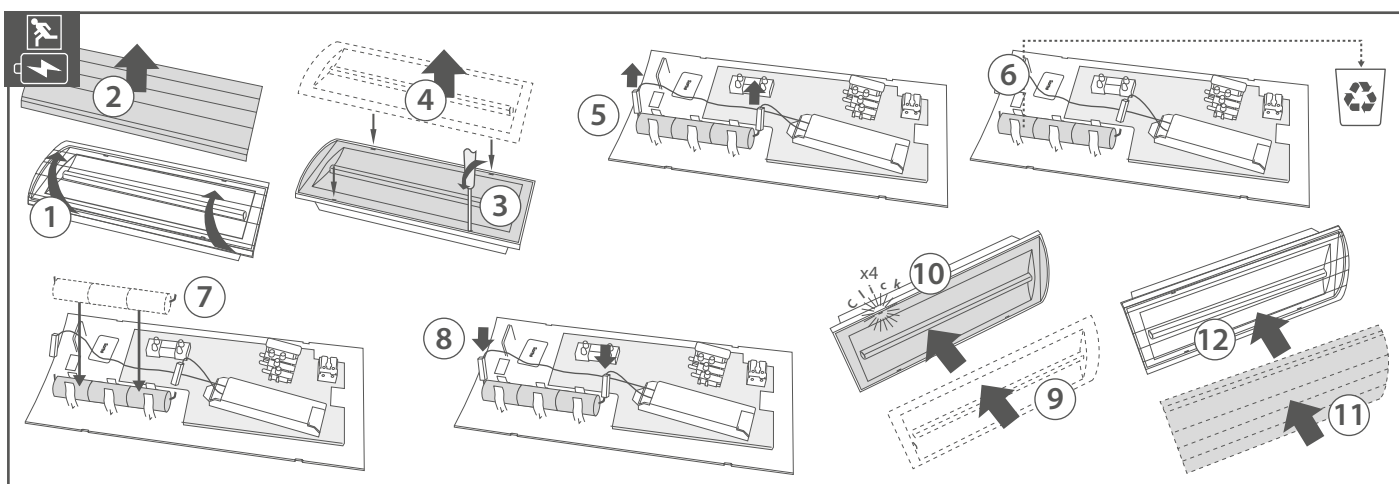
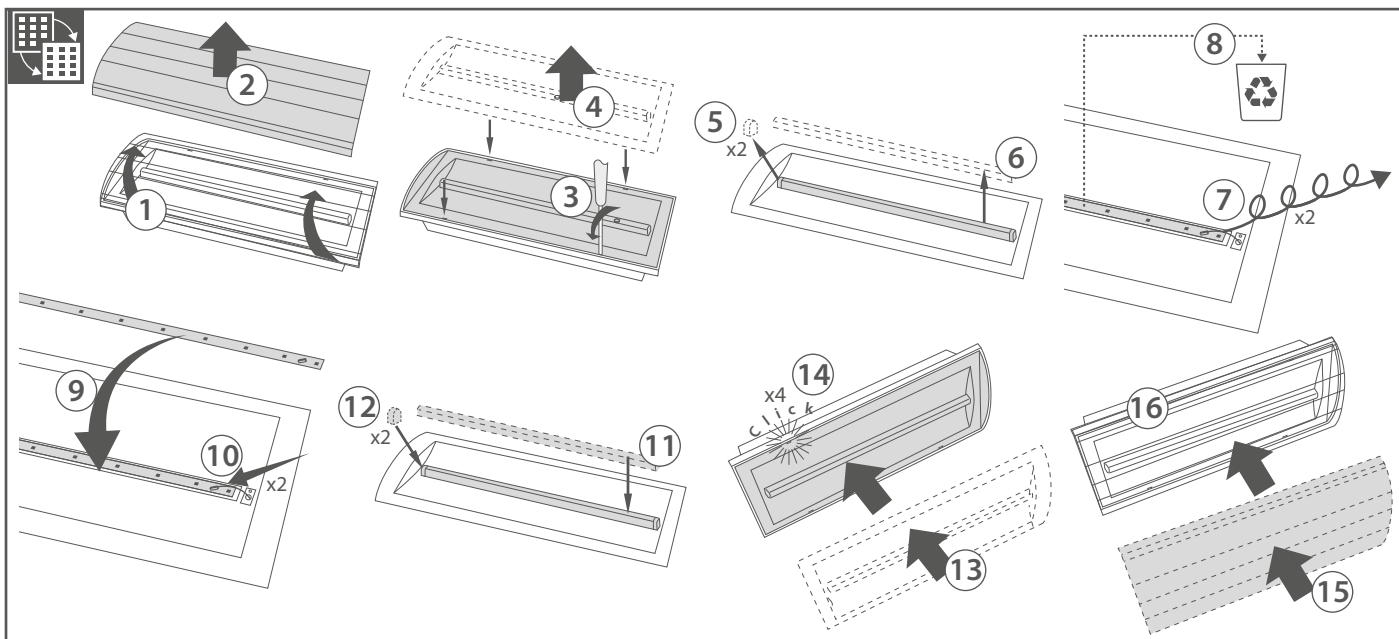


IP40



	KG	TYPE
ISO 7010 & EURO	≈ 1.3	MAINTAINED





## Important-Safety

Before carrying out any servicing on the Sortie, ensure that the mains supply is fully isolated.  
Disconnect the luminaire before insulation testing of the installation.

### OPERATION AND MAINTENANCE

Continual operation at mains voltages in excess of the rated voltage will reduce the expected gear life. The Sortie uses plastic components in its construction and when installed in environments containing chemicals, degradation may occur. Please contact our Technical Department for advice.

### MAINTENANCE

Thorlux products should not be modified. Any modification may render the product unsafe and will invalidate any Safety/ Approval marks. Thorlux will not accept any responsibility for any modified products or for any damage caused as a result of their modification.



MERSE ROAD NORTH MOONS MOAT  
REDDITCH WORCS. B98 9HH ENGLAND  
e-mail: [thorlux@thorlux.co.uk](mailto:thorlux@thorlux.co.uk)  
Web: [www.thorlux.com](http://www.thorlux.com)  
+44 (0)1527 583200

Australia: [www.thorlux.com.au](http://www.thorlux.com.au)  
Deutschland: [www.thorlux.de](http://www.thorlux.de)  
Ireland: [www.thorlux.ie](http://www.thorlux.ie)  
UAE: [www.thorlux.ae](http://www.thorlux.ae)

+61 (0)2 9907 1261  
+49 (0)211 6956 0310  
+353 (0)1 460 4608  
+971 (0)2 656 5842



FM 10913 EMS 532104