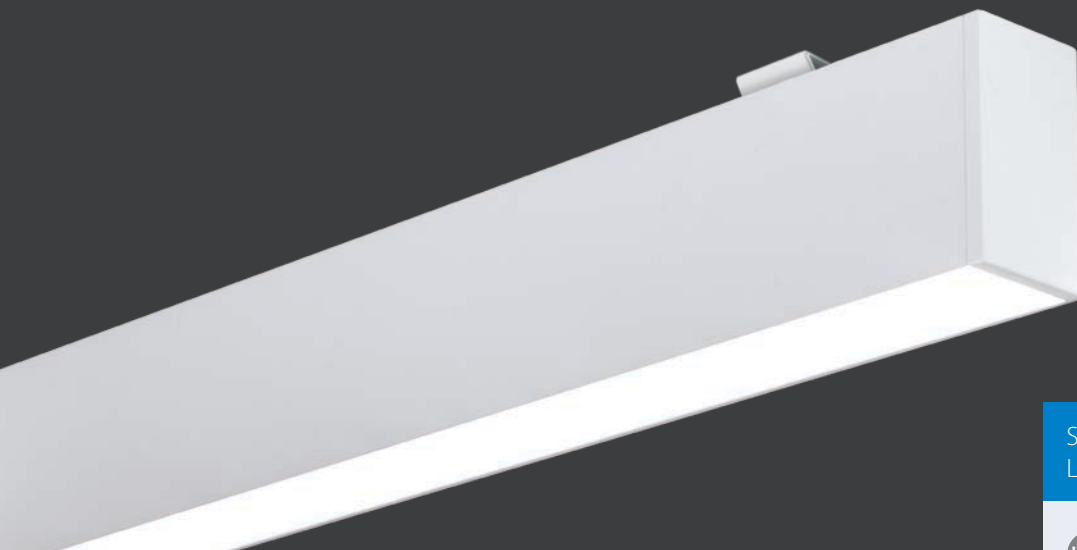


HI-BAR SURFACE INDIVIDUAL



SURFACE INDIVIDUAL LINEAR LED LUMINAIRES



SPECIFICATION

- Extruded aluminium body and die-cast ends finished satin white (RAL 9016)
- Supplied with polycarbonate TP(a) fire-retardant diffuser. Opal or low glare options
- Plug and socket, fast fit and release gear trays
- Supplied with easily adjustable 3m wire suspensions, surface mounting kit and fitted with 3m lead
- SmartScan wireless technology removes the need for control cabling between groups of luminaires
- Fitted with 4000K LEDs

RANGE

	NOMINAL SIZE (mm)	LED	OPAL VERSION	LOW GLARE VERSION	LENGTH (mm)	APPROX. kg	CIRCUIT
SMARTSCAN	1500	17W	HB 18683SS	HB 18686SS	1516	6.8	
		30W	HB 18684SS	HB 18687SS		6.8	
		45W	HB 18685SS	HB 18688SS		6.8	
STANDARD	1500	17W	HB 18689	HB 18692	1516	6.7	L/A
		30W	HB 18690	HB 18693		6.7	L/A
		45W	HB 18691	HB 18694		6.7	L/A

CIRCUIT TYPE - suffix catalogue number with:

SMARTSCAN SmartScan versions use wireless technology and are always suffixed **SS**

STANDARD L - non-dimming (LED) / A - dimming (DALI) e.g. **HB 18683SS** etc.

EMERGENCY VERSION - prefix catalogue number with:

EHB - Emergency (Not available when selecting the 'SS' suffix)

WHB - SmartScan (Only available when selecting the 'SS' suffix)

e.g. **WHB 18683SS** etc.

Add 0.4kg to weights listed



The SmartScan Sensor is located centrally along the length of the luminaire.

SmartScan enables wireless grouping if required (see page 6).

LED CHARACTERISTICS

CRI	80+
COLOUR TEMPERATURE	4000K
RATED LIFE (HOURS)	60K - L80/B10
PROTECTION	LUX GUARD
DRIVER EFFICIENCY	>85%
REPLACEABLE	YES
POWER FACTOR	>0.9

LL/CW **109.5**

For LED characteristics explanation see www.thorlux.com/led-guide

SmartScan Configurations



Find out more at www.thorlux.com/smartsan

HI-BAR SURFACE CONTINUOUS

SURFACE CONTINUOUS LINEAR LED LUMINAIRES



SPECIFICATION

- Extruded aluminium body and die-cast ends finished satin white (RAL 9016)
- Polycarbonate TP(a) fire-retardant diffuser eliminating spread of flame in case of a building fire. Opal or low glare options (see finishing components on page 4)
- Integral through wiring system with plug and socket, fast fit and release gear trays
- Suitable for wire suspended or surface mounting (see finishing components on page 4)
- SmartScan wireless technology removes the need for control cabling between groups of luminaires
- Fitted with 4000K LEDs

LED CHARACTERISTICS

CRI	80+
COLOUR TEMPERATURE	4000K
RATED LIFE (HOURS)	60K - L80/B10
PROTECTION	LUX GUARD
DRIVER EFFICIENCY	>85%
REPLACEABLE	YES
POWER FACTOR	>0.9
LL/CW	109.5

For LED characteristics explanation see www.thorlux.com/led-guide

SmartScan Configurations



Find out more at www.thorlux.com/smartsan

BODY RANGE - Order-finishing components as required (see page 4)

	NOMINAL SIZE (mm)	LED	CAT. No.	LENGTH (mm)	APPROX. kg	CIRCUIT
SMARTSCAN	1500	17W	HB 18707SS	1500	5.6	
		30W	HB 18708SS		5.6	
		45W	HB 18709SS		5.6	
	3000	34W	HB 18710SS	3000	11.0	
		60W	HB 18711SS		11.0	
		90W	HB 18712SS		11.0	
STANDARD	1500	17W	HB 18713	1500	5.5	L/A
		30W	HB 18714		5.5	L/A
		45W	HB 18715		5.5	L/A
	3000	34W	HB 18716	3000	10.9	L/A
		60W	HB 18717		10.9	L/A
		90W	HB 18718		10.9	L/A

CIRCUIT TYPE - suffix catalogue number with:

SMARTSCAN SmartScan versions use wireless technology and are always suffixed **SS**

STANDARD L - non-dimming (LED) / A - dimming (DALI) e.g. **HB 18707SS** etc.

EMERGENCY VERSION* - prefix catalogue number with:

EHB - Emergency (Not available when selecting the 'SS' suffix)

WHB - SmartScan (Only available when selecting the 'SS' suffix)

e.g. **WHB 18707SS** etc.

Add 0.4kg to weights listed

* **NOTE:** 3000mm versions - only one half (1500mm) will illuminate in emergency mode

SPECIAL LENGTHS AVAILABLE TO ORDER

HI-BAR CORNER JOINTS

RANGE

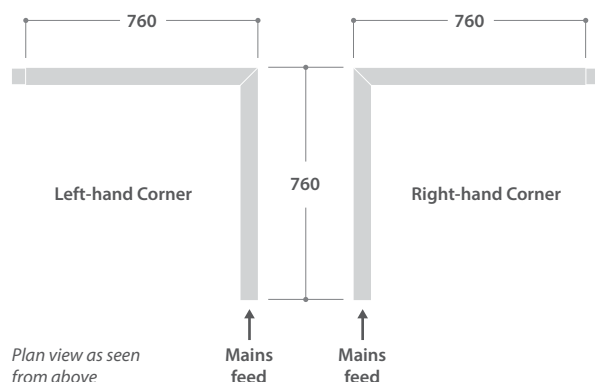
	NOMINAL SIZE (MM)	LED	OPAL VERSION	LOW GLARE VERSION	APPROX. kg	CIRCUIT
SMARTSCAN	Left-hand Corner					
	750 x 750	17W	HB 19210SS	HB 19234SS	5.3	
		30W	HB 19211SS	HB 19235SS	5.3	
		45W	HB 19212SS	HB 19236SS	5.3	
	Right-hand Corner					
	750 x 750	17W	HB 19213SS	HB 19237SS	5.3	
30W		HB 19214SS	HB 19238SS	5.3		
45W		HB 19215SS	HB 19239SS	5.3		
STANDARD	Left-hand Corner					
	750 x 750	17W	HB 19216	HB 19240	5.2	L/A
		30W	HB 19217	HB 19241	5.2	L/A
		45W	HB 19218	HB 19242	5.2	L/A
	Right-hand Corner					
	750 x 750	17W	HB 19219	HB 19243	5.2	L/A
30W		HB 19220	HB 19244	5.2	L/A	
45W		HB 19221	HB 19245	5.2	L/A	

CIRCUIT TYPE - suffix catalogue number with:

SMARTSCAN SmartScan versions use wireless technology and are always suffixed **SS**

STANDARD L - non-dimming (LED) / A - dimming (DALI) e.g. **HB 19210SS** etc.

DIMENSIONS



SURFACE MOUNTED CORNERS FOR CONTINUOUS LINEAR LED LUMINAIRES



SPECIFICATION

- Extruded aluminium body and die-cast ends finished satin white (RAL 9016)
- Supplied fitted with mitred polycarbonate TP(a) fire-retardant diffuser eliminating spread of flame in case of a building fire. Opal or low glare options
- Integral through wiring system with plug and socket, fast fit and release gear trays
- Suitable for wire suspended or surface mounting (see finishing components on page 4)
- SmartScan wireless technology removes the need for control cabling between groups of luminaires
- Fitted with 4000K LEDs

LED CHARACTERISTICS

CRI	80+
COLOUR TEMPERATURE	4000K
RATED LIFE (HOURS)	60K - L80/B10
PROTECTION	LUX GUARD
DRIVER EFFICIENCY	>85%
REPLACEABLE	YES
POWER FACTOR	>0.9

LL/CW **109.5**

For LED characteristics explanation see www.thorlux.com/led-guide

SmartScan Configurations

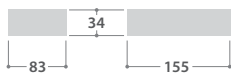


Find out more at www.thorlux.com/smartsan

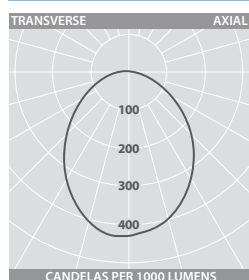
WIRING TIDY



Suitable for use with suspended versions the Wiring Tidy is a surface mounted, easy connect, wiring box for use on solid ceilings.



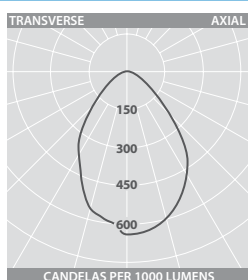
PHOTOMETRIC GUIDE



OPAL VERSION

Luminaire Lumen Output:

17W = 2190lm
30W = 3775lm
45W = 5455lm
34W = 4380lm
60W = 7550lm
90W = 10910lm



LOW GLARE VERSION

Luminaire Lumen Output:

17W = 1725lm
30W = 2975lm ●
45W = 4300lm ●
34W = 3450lm
60W = 5950lm ●
90W = 8600lm ●

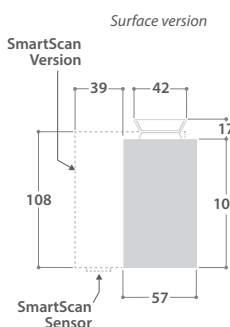
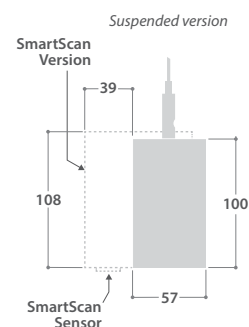
● Exceeds LG7:2015 3000 cd/m² limit

FINISHING COMPONENTS

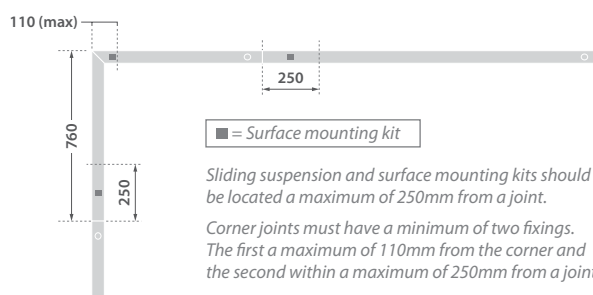
DESCRIPTION	CAT. No.	APPROX. kg
Opal cover (3500mm length)	HB 18667	0.60
Low glare diffuser (3000mm length)	HB 18668	0.60
Wire suspension kit (3m length)*	ZP 16415	0.05
Surface mounting kit*	ZP 16689	0.04
Suspended/surface end kit (2 ends per kit)	HB 18670	0.20
Surface wiring tidy	LL 13361W9	0.40

* See fixing location graphics below for required quantities

DIMENSIONS



CORNER JOINT FIXING LOCATIONS



INDIVIDUAL LUMINAIRE FIXING LOCATIONS



Surface mounting kits should be located a maximum of 250mm from either end.

CONTINUOUS LUMINAIRE FIXING LOCATIONS



Surface mounting kits should be located a maximum of 250mm either side of joints or from ends.

HI-BAR SURFACE

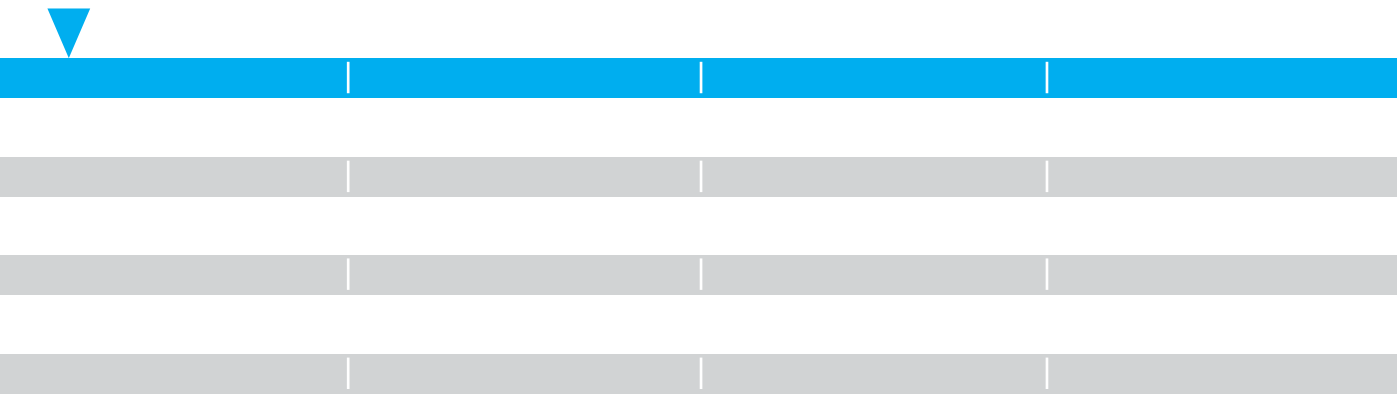


HI-BAR

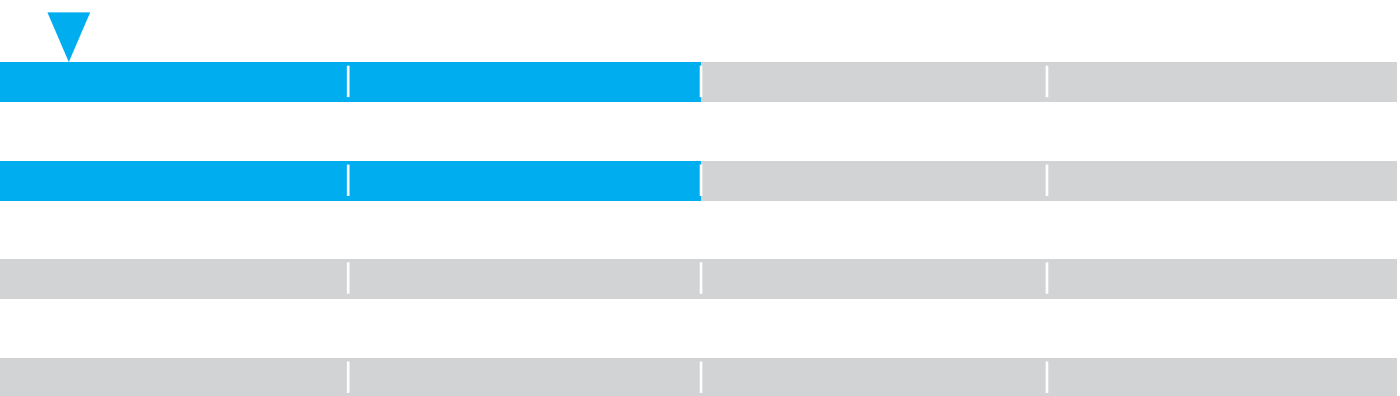
GROUP CONTROL USING SMARTSCAN

SmartScan utilises a wireless mesh network. Each device acts as a repeater, ensuring that data signals always find a suitable communication path. Groups are easily created and changed providing future flexibility without altering wiring.

Example 1 - Along a row of recessed, surface or suspended continuous or individual luminaires



Example 2 - Along and across rows of recessed, surface or suspended continuous or individual luminaires



Example 3 - Across rows of recessed, surface or suspended continuous or individual luminaires

