

LET US INSPIRE YOU

RETAIL, HOSPITALITY AND DISPLAY LIGHTING







## WELCOME TO 'LET US INSPIRE YOU', THE THORLUX SHOWCASE OF ITS RETAIL, HOSPITALITY & DISPLAY PROJECTS.

In 2017 Thorlux Lighting joined forces with its sister company, and subsidiary, Compact Lighting, to form a united single trading entity with renewed focus on dedicating its significant resources towards the retail, hospitality and display sector.

For over 80 years Thorlux has manufactured increasingly sophisticated luminaires and has a strong reputation for high technology products and services, including the development of its first electronic energy-saving lighting control system in the mid 1990's. The company has grown consistently since then and is highly regarded for its innovation, technical capability and engineering prowess. From its base in the UK Thorlux has relished the challenge associated with the introduction and development of LED technology and now has a portfolio of solutions and services for most applications.

Retail and hospitality clients have often been at the leading edge of technology introduction and have been instrumental in the co-development of new products. Retailers are renowned for their early adoption of technically advanced solutions as they look to differentiate their offer in a fiercely competitive environment. Increased energy efficiency, reduced cost of ownership, strong environmental credentials, and an optimised return on investment are all measurable objectives, but there is a wider context to lighting in this category that includes elements such as 'customer experience, brand identity, image, value creation' for which lighting can make a major contribution.

Thorlux Lighting puts the 'customer first' and constantly strives to deliver excellent customer service. Hopefully this brochure provides an inspiration to those that seek complete solutions for all these needs.

*Lee Bensley*

**Head of Retail Lighting Solutions**

# COLOUR IMPRESSION

---

From the warmth of a restaurant's intimate dinner setting to the cool ambience of a clean room environment, Thorlux offers a wide spectrum of LED colour temperature choices.

*"The right light for the right application"*



VERY WARM  
*Hospitality*

2700°K



WARM  
*Fashion*

3000°K



NEUTRAL  
*Showrooms*

4000°K



COOL  
*Clinical areas*

6500°K



# COLOUR QUALITY

Saturated colours and enriched textures achieved through good lighting techniques.

## STAND OUT

---

Vivid, crisp and enriched colour quality that makes the product jump out of the display.



## GET NOTICED

---

Attract shoppers with merchandise that is bright, vibrant and intense.

SEE HOW THORLUX USES THESE PRINCIPLES IN ITS PROJECTS



# JIGSAW

## GUILDFORD

Jigsaw is a fashion clothing retailer with outlets in the UK, the United States and an independent licensee in Australia. The first store was opened in 1972 in London and Jigsaw now has over 65 stores across the UK. The company has introduced a new format at its store in Guildford, adding homeware on the first floor and installing Thorlux LED luminaires.

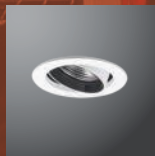
### FEATURED PRODUCTS



PIVITZ



TRACK

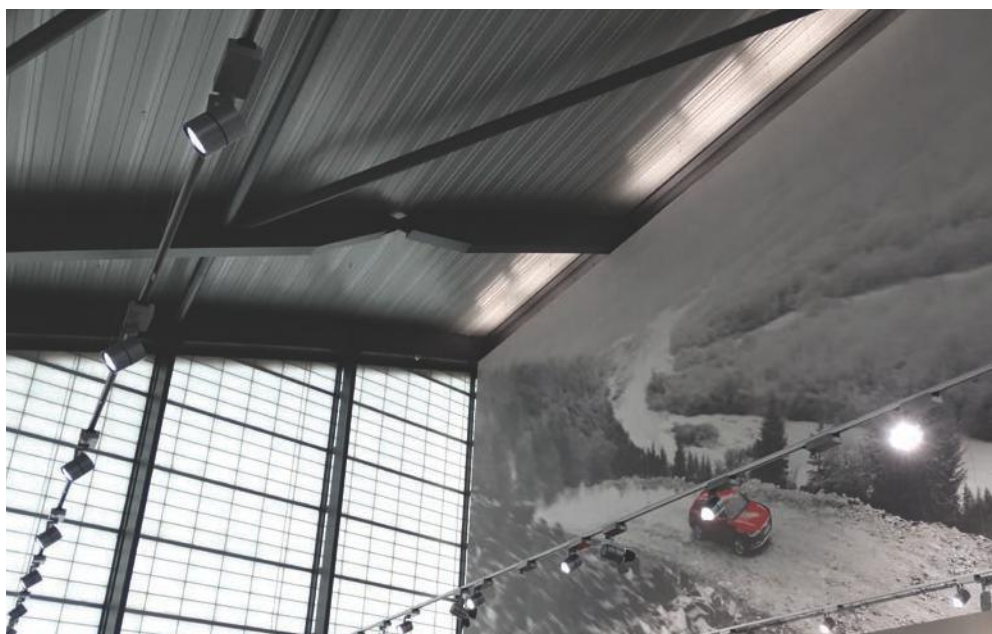


MINA-M









# WEST LONDON AUDI LONDON

Audi is a German automobile manufacturer that designs, engineers, produces, markets and distributes luxury vehicles. Audi is a member of the Volkswagen Group and has its roots in Bavaria, Germany. The company is committed to reducing its impact on the environment by investing in technologies such as LED lighting in all showrooms.

## FEATURED PRODUCTS



PIVITZ



TRACK



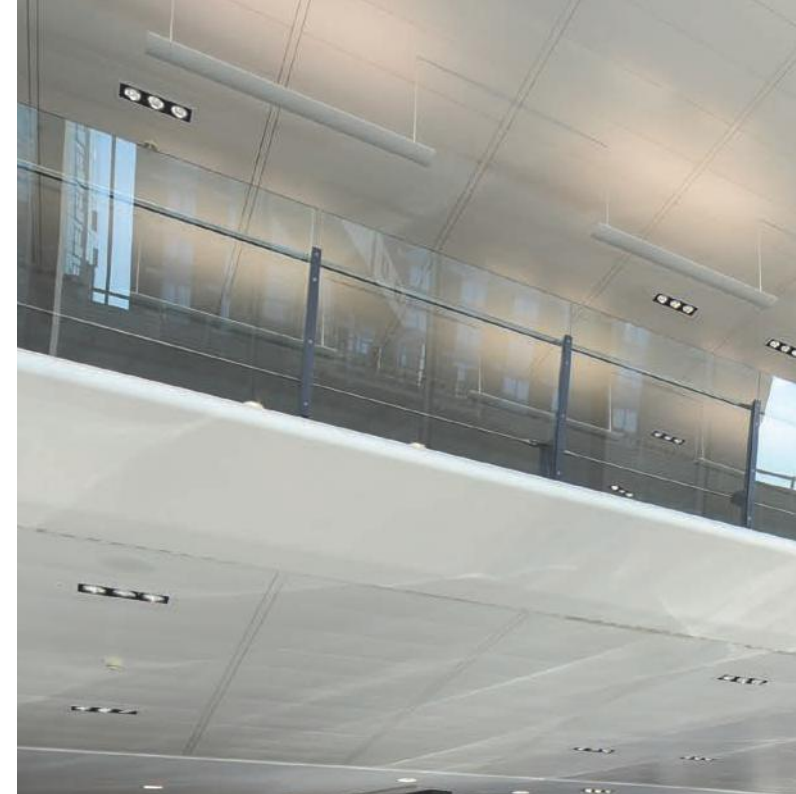
NEMUS



SOLIS-L



MINA-L







# DESSO SHOWROOM LONDON

Founded over 80 years ago, today Desso is commercially active in more than 100 countries, having built a reputation as a leading manufacturer of high quality carpet tiles, broadloom and artificial grass pitches. Business carpets represents more than half of its total sales and can be found in offices, banks, retail units, public buildings, schools, universities and care centres. Sustainability plays a fundamental part in all Desso's operations, and energy saving LED lighting was deemed vital to the London showroom's long term sustainability goal.

## FEATURED PRODUCTS



HI-BAR



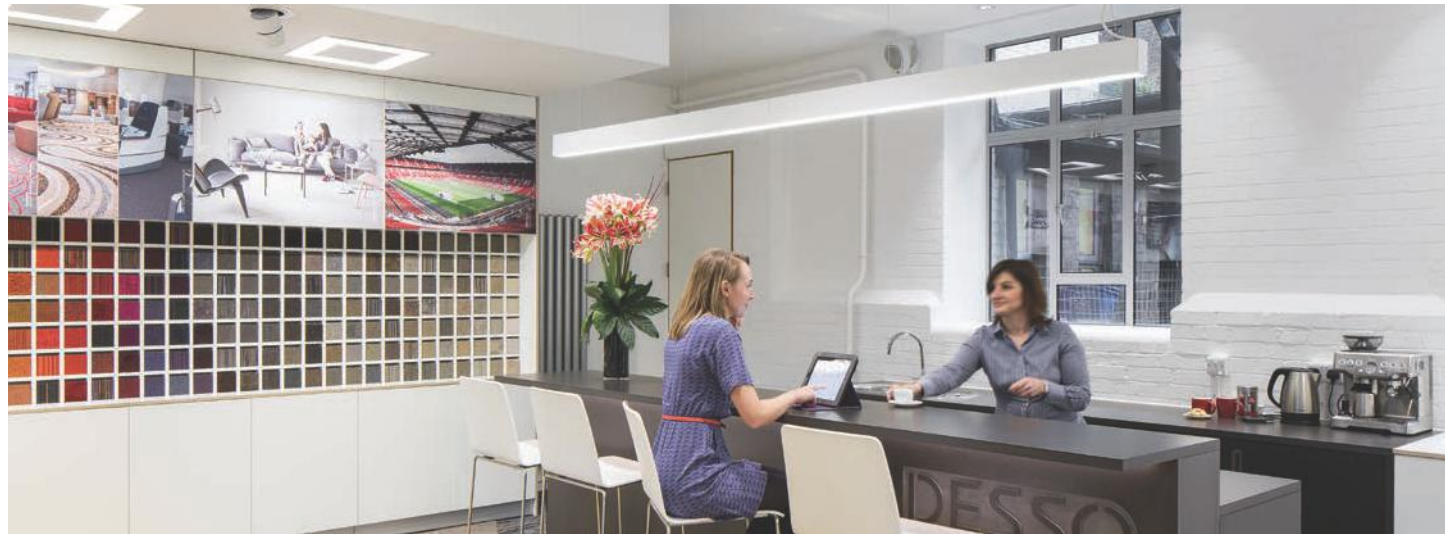
XL-20



NEMUS



PIVITZ



# BENTLEY SHOWROOM

LEICESTER

Bentley Motors Limited is a British company that designs, develops, and manufactures luxury vehicles which are largely hand-built. Now based in Crewe, England, Bentley was founded by W. O. Bentley in 1919 in Cricklewood, North London. Their Leicester showroom has recently undergone a complete refurbishment including the addition of Thorlux LED luminaires.

## FEATURED PRODUCTS



HI-BAR



G3











# NISBETS

## READING

Nisbets was established in 1983 on the basic principle of high quality catering equipment affordably priced. Based in Avonmouth, Bristol, Nisbets has expanded across multiple countries in Europe and Oceania and now employs over 2000 staff worldwide. The company has created a set of environmental objectives and is committed to finding innovative ways to reduce their environmental impact including the use of solar panels and LED lighting.

## FEATURED PRODUCTS



ZIPLINE



FLUTE





# CLARKS RUSSELL SQUARE

LONDON

Clarks, is a British-based, international shoe manufacturer and retailer. The company has over 1,000 branded stores and franchises around the world and also sells through third-party distribution. Globally, Clarks has been rolling out a new retail store refit programme which uses 100% LED luminaires resulting in considerable energy savings for the company.

## FEATURED PRODUCTS



PITCH-M

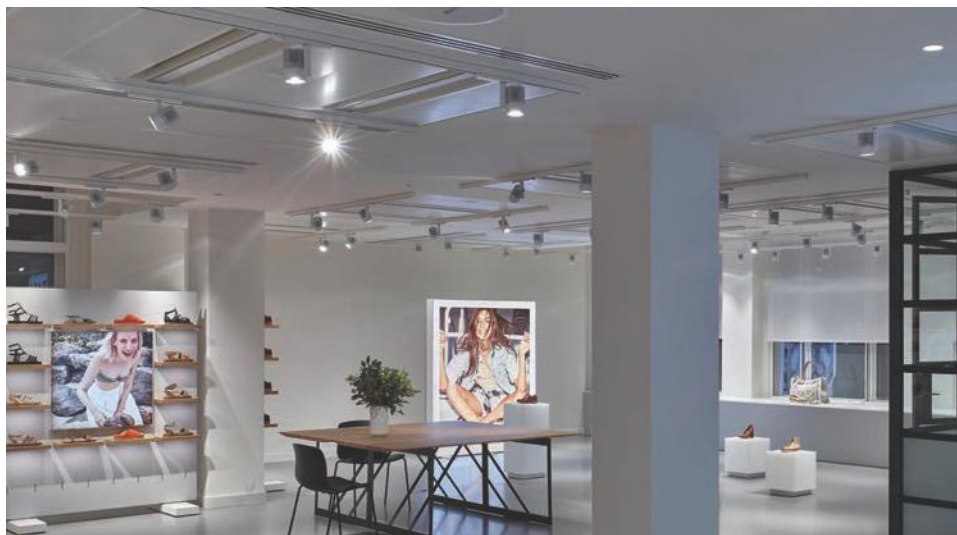


TRACK



BESPOKE  
PENDANT













# HIGH STREET FASHION

Lighting for high street fashion stores should create a unique shopping environment; a customer who enjoys their shopping experience can stay longer, spend more money, and be more likely to return. Using a combination of colour, contrast, control and energy efficiency the design should engage customers and reflect the retailers brand and identity.

## FEATURED PRODUCTS



**HI-STYLE  
LED**



**PIVITZ**



**BESPOKE  
LINEAR  
TRACK**



COMPLETE LIGHTING SOLUTIONS

# BESPOKE SOLUTIONS

Tailor made lighting designs create unique spaces that stand out from the competition.



COMPLETE LIGHTING SOLUTIONS

# EXTERIOR LIGHTING

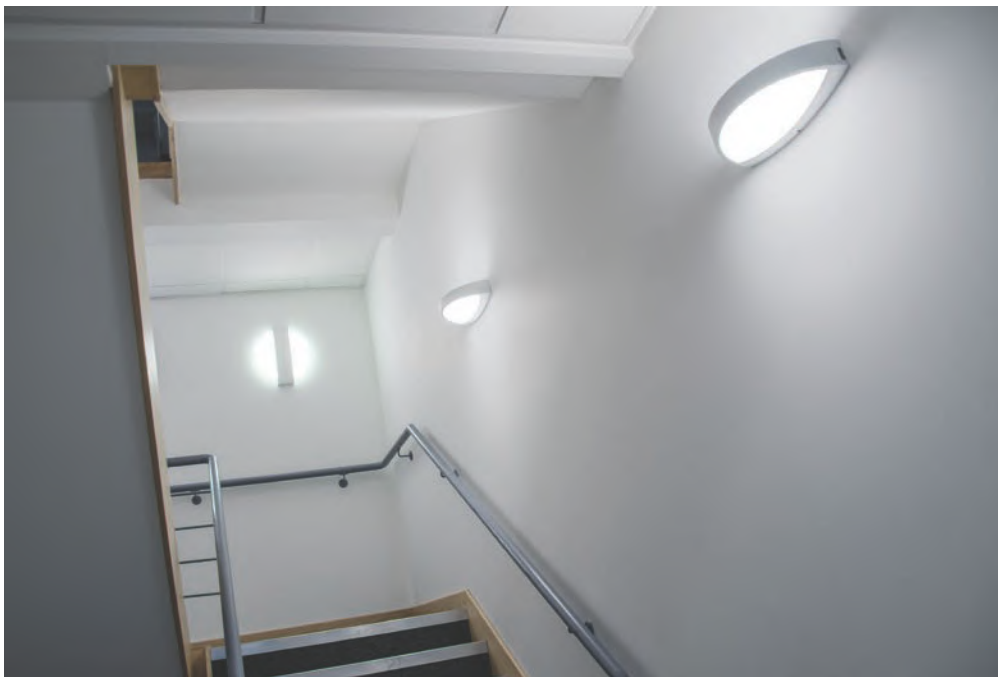
Improved safety and reduced risk of crime are essential ingredients of any positive customer experience.



COMPLETE LIGHTING SOLUTIONS

# BACK OF HOUSE

Correct lighting back of house is essential for the health and safety, and well-being, of employees.



COMPLETE LIGHTING SOLUTIONS

# EMERGENCY

All retailers should comply with the emergency lighting standards to ensure customer and employee safety are treated as a priority in any store environment.

[www.thorlux.com/emergency-systems](http://www.thorlux.com/emergency-systems)





COMPLETE LIGHTING SOLUTIONS

# CONTROL SYSTEMS



Control colour temperatures and customise scenes with the SmartScan ColourActive dongle and app.

[www.thorlux.com/smartscan](http://www.thorlux.com/smartscan)



Improve energy efficiency by utilising natural daylight.

# QUALITY & ENVIRONMENTAL CONTROL



Thorlux designs and manufactures its luminaires to the highest standards, ensuring optimal performance and reliability. All Thorlux LED and conventional luminaires are covered by a 5 year warranty (excluding lamps and batteries). Customers can therefore purchase Thorlux luminaires with even more confidence.

A long and stable history reassures Thorlux customers that its warranty is meaningful. Many companies offer a pre-sale warranty, but post-sale claims require that the company is still trading.

*See terms and conditions for full details.*



Thorlux Lighting, the largest company in the F.W. Thorpe Plc group, is proud that around **97%** of its products are manufactured in the UK.

The F.W. Thorpe Plc group employs over 700 people. In 2015/16, the group paid over **£15 million** in tax to the UK government – an amount which supports UK local authorities and jobs within them.

By manufacturing in the UK, Thorlux can meet urgent customer demands without the need to transport products by air to the UK, which would involve additional financial and environmental costs.

# CARBON OFFSETTING

## THE THORLUX WAY

---

Thorlux is committed to minimising the environmental impact of both its manufacturing processes and its products. However, even with the most responsible approach, some carbon dioxide (CO<sub>2</sub>) will be released into the atmosphere as an indirect result of factory and selling activities and customers' use of luminaires.

In 2009, Thorlux established an ambitious carbon-offsetting scheme to help compensate for these emissions. The company has chosen to plant trees. Why trees? Trees and other plants absorb CO<sub>2</sub> during photosynthesis. One tree grown to maturity in open space can absorb approximately 1 tonne of CO<sub>2</sub> over its lifetime. A forest covering many acres can effectively lock up CO<sub>2</sub>, creating a 'carbon sink'.

The scheme is now accredited under the Woodland Carbon Code. On its own land in Monmouthshire, Wales, Thorlux has to date planted 149,849 trees (*Spring 2017*).

[www.thorlux.com/carbon-offsetting](http://www.thorlux.com/carbon-offsetting)





Designers, manufacturers and suppliers  
of professional lighting systems

INDUSTRIAL LUMINAIRES  
COMMERCIAL LUMINAIRES  
FLOODLIGHTING LUMINAIRES  
ARCHITECTURAL LUMINAIRES  
HEALTHCARE LUMINAIRES  
HAZARDOUS AREA LUMINAIRES  
RETAIL & DISPLAY LUMINAIRES  
CONTROLS AND SYSTEMS

A DIVISION OF F.W. THORPE PLC

**Thorlux Carbon Offsetting Project:**  
[www.thorlux.com/trees](http://www.thorlux.com/trees)

The information given in this catalogue is typical and must not be interpreted as a guarantee of individual product performance and/or characteristics. We reserve the right to alter specifications and designs without prior notice.

**Thorlux Lighting**  
Merse Road  
North Moons Moat  
Redditch  
Worcestershire  
B98 9HH  
England

**T** +44 (0)1527 583200  
**F** +44 (0)1527 584177  
**E** [thorlux@thorlux.co.uk](mailto:thorlux@thorlux.co.uk)  
**W** [www.thorlux.com](http://www.thorlux.com)

**Direct UK Sales Line: 01527 583222**

**Thorlux Lighting Ireland**  
Unit G6  
Riverview Business Park  
Nangor Road  
Gallanstown  
Dublin 12  
Ireland

**T** +353 (0)1 460 4608  
**F** +353 (0)1 460 4609  
**E** [thorlux@thorlux.ie](mailto:thorlux@thorlux.ie)  
**W** [www.thorlux.ie](http://www.thorlux.ie)

**Thorlux Lighting Deutschland**  
Ernst Gnoß Strasse 7  
40219 Düsseldorf  
Deutschland

**T** +49 (0)211 695 603-10  
**F** +49 (0)211 695 603-11  
**E** [thorlux@thorlux.de](mailto:thorlux@thorlux.de)  
**W** [www.thorlux.de](http://www.thorlux.de)

**Thorlux Lighting Australasia Pty Ltd.**  
31 Cross Street  
Brookvale  
Sydney  
NSW 2100  
Australia

**T** 1300 04 32 32  
**T** +61 (0)2 9907 1261  
**E** [thorlux@thorlux.com.au](mailto:thorlux@thorlux.com.au)  
**W** [www.thorlux.com.au](http://www.thorlux.com.au)

Registered No. ABN 139 400 507

**Thorlux Lighting LLC**  
Office 334  
European Business Centre  
Green Community  
Dubai Investment Park 1  
PO Box 33484  
Dubai  
United Arab Emirates

**T** +971 (0)2 656 5842  
**F** +971 (0)2 622 4149  
**E** [sales@thorlux.ae](mailto:sales@thorlux.ae)  
**W** [www.thorlux.ae](http://www.thorlux.ae)

