

# Hi-Bar

RECESSED

SURFACE

SUSPENDED

LINEAR CONTINUOUS AND  
INDIVIDUAL LUMINAIRES







LINEAR CONTINUOUS AND  
INDIVIDUAL LUMINAIRES

RECESSED

SURFACE

SUSPENDED



# Hi-Bar

Introduction	<a href="#">Page 5</a>
RECESSED CONTINUOUS	<a href="#">Page 7</a>
RECESSED INDIVIDUAL	<a href="#">Page 9</a>
SURFACE / SUSPENDED CONTINUOUS	<a href="#">Page 11</a>
SURFACE / SUSPENDED INDIVIDUAL	<a href="#">Page 13</a>
Group control using SmartScan	<a href="#">Page 14</a>
Dimensions and Photometrics	<a href="#">Page 15</a>





LINEAR CONTINUOUS AND  
INDIVIDUAL LUMINAIRES

RECESSED

SURFACE

SUSPENDED





# Hi-Bar

The versatile Hi-Bar luminaire is suitable for recessed, surface and wire suspension mounting making it ideal for a range of building wide applications. Slim and elegant, the Hi-Bar combines supreme efficiency and longevity with design flexibility.



# HI-BAR RECESSED CONTINUOUS



# HI-BAR RECESSED CONTINUOUS

## RECESSED CONTINUOUS LINEAR LED LUMINAIRES



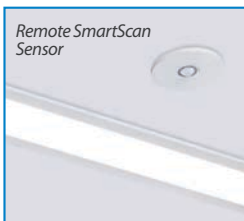
### SPECIFICATION

- Extruded aluminium body and die cast ends finished satin white (RAL 9016)
- Polycarbonate TP(a) flame retardant diffuser eliminating spread of flame in case of a building fire
- Integral through wiring system with plug and socket, fast fit and release gear trays
- SmartScan wireless technology removes the need for control cabling between groups of luminaires
- Fitted with 4000K LEDs

### LED CHARACTERISTICS

CRI	80+
COLOUR TEMPERATURE	4000K
RATED LIFE (HOURS)	60K - L80/B10
PROTECTION	LUX GUARD
DRIVER EFFICIENCY	>85%
REPLACEABLE	YES
POWER FACTOR	>0.9
LL/CW	109.5

For LED characteristics explanation see  
[www.thorlux.com/led-characteristics](http://www.thorlux.com/led-characteristics)



The Remote SmartScan Sensor controls either a 1500mm or a 3000mm length and is connected centrally along the length of the luminaire. The Sensor is supplied with an 800mm interconnecting lead. SmartScan enables wireless grouping if required (see page 14).

### BODY RANGE - Order body and finishing components as required

	NOMINAL SIZE (mm)	LED	CAT. No.	LENGTH (mm)	APPROX. kg	CIRCUIT
SMARTSCAN	1500	17W	HB 18695SS	1500	5.7	
		30W	HB 18696SS		5.7	
		45W	HB 18697SS		5.7	
	3000	34W	HB 18698SS	3000	11.6	
		60W	HB 18699SS		11.6	
		90W	HB 18700SS		11.6	
STANDARD	1500	17W	HB 18701	1500	5.6	L/A
		30W	HB 18702		5.6	L/A
		45W	HB 18703		5.6	L/A
	3000	34W	HB 18704	3000	11.5	L/A
		60W	HB 18705		11.5	L/A
		90W	HB 18706		11.5	L/A

CIRCUIT TYPE - suffix catalogue number with:

**SMARTSCAN** SmartScan versions use wireless technology and are always suffixed **SS**  
**STANDARD** L - non-dimming (LED) / A - dimming (DALI) e.g. **HB 18695SS** etc.

EMERGENCY VERSION\* - prefix catalogue number with:

**EHB** - Emergency / **WHB** - SmartScan e.g. **EHB 18695SS** etc.

Add 0.4kg to weights listed.

\* NOTE: 3000mm versions - only one half (1500mm) will illuminate in emergency mode

### SPECIAL LENGTHS AVAILABLE TO ORDER

### FINISHING COMPONENTS

DESCRIPTION	CAT. No.	APPROX. kg
Opal cover (3500mm length)	HB 18667	0.6
Recessed end kit (2 ends per kit)	HB 18669	0.2



Learn more about SmartScan at:  
[www.thorlux.com/smartsan](http://www.thorlux.com/smartsan)



# HI-BAR RECESSED INDIVIDUAL





# HI-BAR RECESSED INDIVIDUAL

## RECESSED INDIVIDUAL LINEAR LED LUMINAIRES



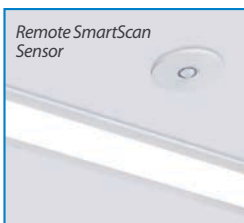
### SPECIFICATION

- Extruded aluminium body and die cast ends finished satin white (RAL 9016)
- Polycarbonate TP(a) flame retardant diffuser
- Plug and socket, fast fit and release gear trays
- SmartScan wireless technology removes the need for control cabling between groups of luminaires
- Fitted with 4000K LEDs

### LED CHARACTERISTICS

CRI	80+
COLOUR TEMPERATURE	4000K
RATED LIFE (HOURS)	60K - L80/B10
PROTECTION	LUX GUARD
DRIVER EFFICIENCY	>85%
REPLACEABLE	YES
POWER FACTOR	>0.9
LL/CW	109.5

For LED characteristics explanation see  
[www.thorlux.com/led-characteristics](http://www.thorlux.com/led-characteristics)



The Remote SmartScan Sensor is supplied with an 800mm interconnecting lead.

Connection is located centrally along the length of the luminaire.

SmartScan enables wireless grouping if required (see page 14).

### RANGE

	NOMINAL SIZE (mm)	LED	CAT. No.	LENGTH (mm)	APPROX. kg	CIRCUIT
SMARTSCAN	1500	17W	HB 18671SS	1532	6.0	
		30W	HB 18672SS		6.0	
		45W	HB 18673SS		6.0	
STANDARD	1500	17W	HB 18677	1532	5.9	L/A
		30W	HB 18678		5.9	L/A
		45W	HB 18679		5.9	L/A

CIRCUIT TYPE - suffix catalogue number with:

**SMARTSCAN** SmartScan versions use wireless technology and are always suffixed **SS**  
**STANDARD** L - non-dimming (LED) / A - dimming (DALI) e.g. HB 18671SS etc.

EMERGENCY VERSION - prefix catalogue number with:

**EHB** - Emergency / **WHB** - SmartScan e.g. EHB 18671SS etc.  
Add 0.4kg to weights listed.



Learn more about SmartScan at:  
[www.thorlux.com/smartscan](http://www.thorlux.com/smartscan)



# HI-BAR SURFACE / SUSPENDED CONTINUOUS



The SmartScan Sensor controls either a 1500mm length or a 3000mm length and is located centrally along the length of the luminaire.

SmartScan enables wireless grouping if required (see page 14).





# HI-BAR SURFACE / SUSPENDED CONTINUOUS

## SURFACE/SUSPENDED CONTINUOUS LINEAR LED LUMINAIRES



### SPECIFICATION

- Extruded aluminium body and die cast ends finished satin white (RAL 9016)
- Polycarbonate TP(a) flame retardant diffuser eliminating spread of flame in case of a building fire
- Integral through wiring system with plug and socket, fast fit and release gear trays
- Suitable for wire suspended or surface mounting
- SmartScan wireless technology removes the need for control cabling between groups of luminaires
- Fitted with 4000K LEDs

### LED CHARACTERISTICS

CRI	80+
COLOUR TEMPERATURE	4000K
RATED LIFE (HOURS)	60K - L80/B10
PROTECTION	LUX GUARD
DRIVER EFFICIENCY	>85%
REPLACEABLE	YES
POWER FACTOR	>0.9
LL/CW	109.5

For LED characteristics explanation see  
[www.thorlux.com/led-characteristics](http://www.thorlux.com/led-characteristics)



Learn more about SmartScan at:  
[www.thorlux.com/smartsan](http://www.thorlux.com/smartsan)

### BODY RANGE - Order body and finishing components as required

	NOMINAL SIZE (mm)	LED	CAT. No.	LENGTH (mm)	APPROX. kg	CIRCUIT
SMARTSCAN	1500	17W	HB 18707SS	1500	5.6	
		30W	HB 18708SS		5.6	
		45W	HB 18709SS		5.6	
	3000	34W	HB 18710SS	3000	11.0	
		60W	HB 18711SS		11.0	
		90W	HB 18712SS		11.0	
STANDARD	1500	17W	HB 18713	1500	5.5	L/A
		30W	HB 18714		5.5	L/A
		45W	HB 18715		5.5	L/A
	3000	34W	HB 18716	3000	10.9	L/A
		60W	HB 18717		10.9	L/A
		90W	HB 18718		10.9	L/A

CIRCUIT TYPE - suffix catalogue number with:

**SMARTSCAN** SmartScan versions use wireless technology and are always suffixed **SS**  
**STANDARD** L - non-dimming (LED) / A - dimming (DALI) e.g. HB 18707SS etc.

EMERGENCY VERSION\* - prefix catalogue number with:

**EHB** - Emergency / **WHB** - SmartScan e.g. EHB 18707SS etc.  
Add 0.4kg to weights listed.

\* NOTE: 3000mm versions - only one half (1500mm) will illuminate in emergency mode

### SPECIAL LENGTHS AVAILABLE TO ORDER

### FINISHING COMPONENTS

DESCRIPTION	CAT. No.	APPROX. kg
Opal cover (3500mm length)	HB 18667	0.60
Wire suspension kit (3m length)*	ZP 16415	0.05
Surface mounting kit*	ZP 16689	0.04
Suspended/surface end kit (2 ends per kit)	HB 18670	0.20

\* See the mounting point spacing table on page 15  
for required quantities

Dimensions and Photometrics page 15



# HI-BAR SURFACE / SUSPENDED INDIVIDUAL



*SmartScan  
version*

The SmartScan Sensor is located centrally along the length of the luminaire. SmartScan enables wireless grouping if required (see page 14).



*Wire suspension  
mounting*



*Surface  
mounting*



# HI-BAR SURFACE / SUSPENDED INDIVIDUAL

## SURFACE/SUSPENDED INDIVIDUAL LINEAR LED LUMINAIRES



### SPECIFICATION

- Extruded aluminium body and die cast ends finished satin white (RAL 9016)
- Polycarbonate TP(a) flame retardant diffuser
- Plug and socket fast, fit and release gear trays
- Supplied with easily adjustable 3m wire suspensions, surface mounting kit and fitted with 3m lead
- SmartScan wireless technology removes the need for control cabling between groups of luminaires
- Fitted with 4000K LEDs

### LED CHARACTERISTICS

CRI	80+
COLOUR TEMPERATURE	4000K
RATED LIFE (HOURS)	60K - L80/B10
PROTECTION	LUX GUARD
DRIVER EFFICIENCY	>85%
REPLACEABLE	YES
POWER FACTOR	>0.9
LL/CW	109.5

For LED characteristics explanation see  
[www.thorlux.com/led-characteristics](http://www.thorlux.com/led-characteristics)



Learn more about SmartScan at:  
[www.thorlux.com/smartscan](http://www.thorlux.com/smartscan)

### RANGE

	NOMINAL SIZE (mm)	LED	CAT. No.	LENGTH (mm)	APPROX. kg	CIRCUIT
SMARTSCAN	1500	17W	<b>HB 18683SS</b>	1516	6.8	
		30W	<b>HB 18684SS</b>		6.8	
		45W	<b>HB 18685SS</b>		6.8	
STANDARD	1500	17W	<b>HB 18689</b>	1516	6.7	L/A
		30W	<b>HB 18690</b>		6.7	L/A
		45W	<b>HB 18691</b>		6.7	L/A

**CIRCUIT TYPE** - suffix catalogue number with:

**SMARTSCAN** SmartScan versions use wireless technology and are always suffixed **SS**  
**STANDARD** L - non-dimming (LED) / A - dimming (DALI) e.g. **HB 18683SS** etc.

**EMERGENCY VERSION** - prefix catalogue number with:

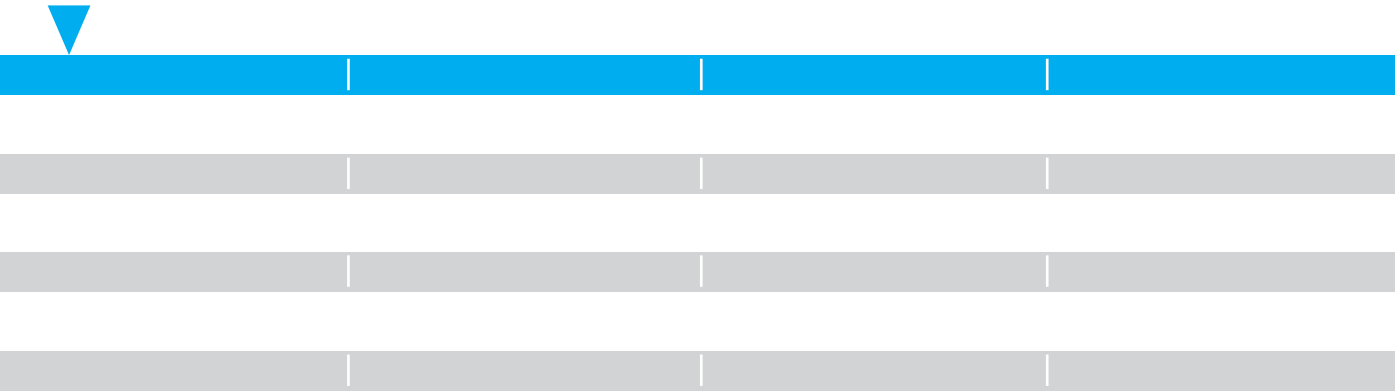
**EHB** - Emergency / **WHB** - SmartScan e.g. **EHB 18683SS** etc.  
Add 0.4kg to weights listed.

# HI-BAR

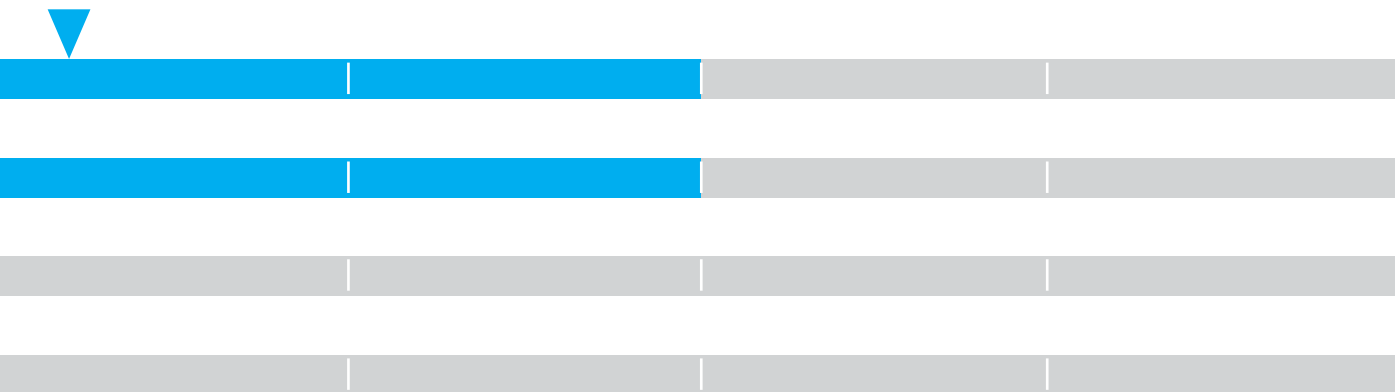
## Group control using SmartScan

SmartScan utilises a wireless mesh network. Each device acts as a repeater, ensuring that data signals always find a suitable communication path. Groups are easily created and changed providing future flexibility without altering wiring.

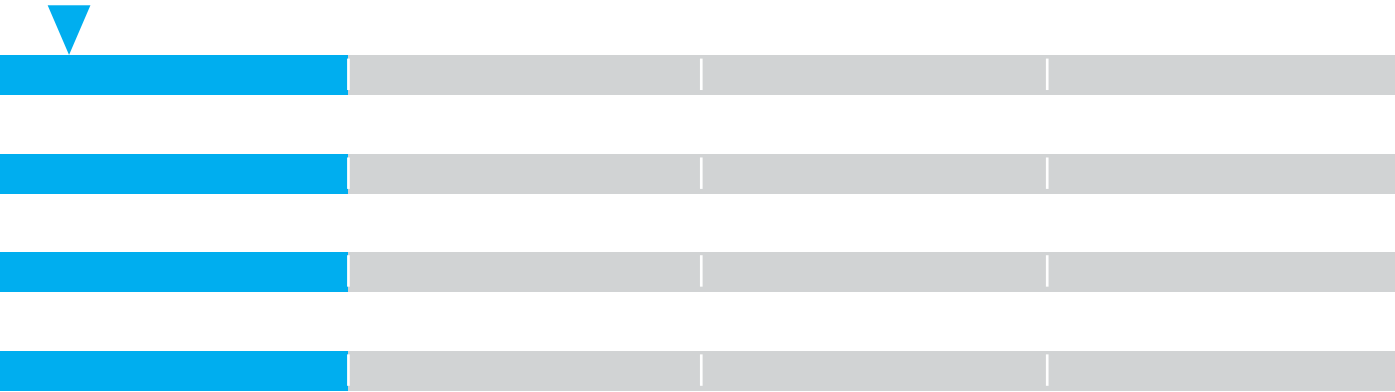
**Example 1** - Along a row of recessed, surface or suspended continuous or individual luminaires



**Example 2** - Along and across rows of recessed, surface or suspended continuous or individual luminaires



**Example 3** - Across rows of recessed, surface or suspended continuous or individual luminaires





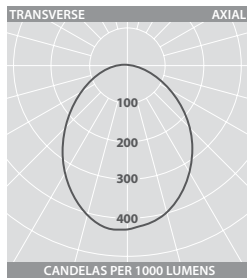
Learn more about SmartScan at:  
[www.thorlux.com/smartscan](http://www.thorlux.com/smartscan)



# HI-BAR

## Dimensions and Photometrics

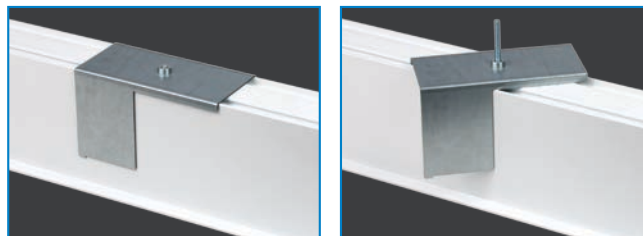
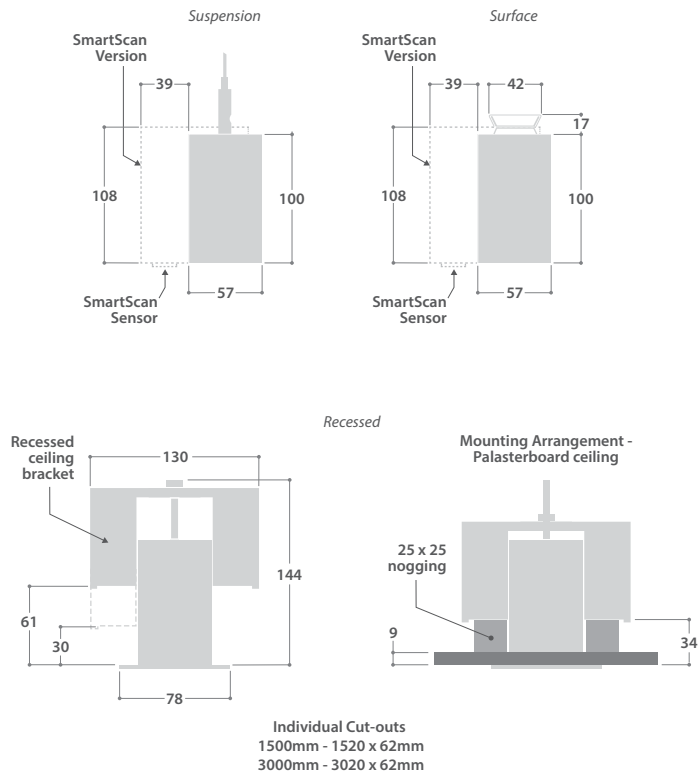
### PHOTOMETRIC GUIDE



Luminaire Lumen Output:

17W = 2190lm  
 30W = 3775lm  
 45W = 5455lm  
 34W = 4380lm  
 60W = 7550lm  
 90W = 10910lm

### DIMENSIONS



Simple to apply recessed ceiling fixing bracket:

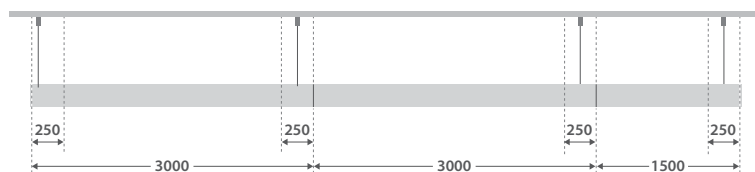
- 1 - Offer up the luminaire in to the cut aperture and tighten the screw from below
- 2 - The bracket will rotate against the body and pull the body up to the ceiling

### SLIDING SUSPENSION



Sliding suspensions should be located a maximum of 250mm from either end.

### CONTINUOUS ROWS USING SLIDING SUSPENSION



Sliding suspension kits should be located a maximum of 250mm either side of joints or from ends.



Designers, manufacturers and suppliers  
of professional lighting systems

INDUSTRIAL LUMINAIRES  
COMMERCIAL LUMINAIRES  
FLOODLIGHTING LUMINAIRES  
ARCHITECTURAL LUMINAIRES  
HEALTHCARE LUMINAIRES  
HAZARDOUS AREA LUMINAIRES  
RETAIL & DISPLAY LUMINAIRES  
CONTROLS AND SYSTEMS

A DIVISION OF F.W. THORPE PLC

**Thorlux Carbon Offsetting Project:**  
[www.thorlux.com/trees](http://www.thorlux.com/trees)

The information given in this catalogue is typical and must not be interpreted as a guarantee of individual product performance and/or characteristics. We reserve the right to alter specifications and designs without prior notice.

**Thorlux Lighting**  
Merse Road  
North Moons Moat  
Redditch  
Worcestershire  
B98 9HH  
England

**T** +44 (0)1527 583200  
**F** +44 (0)1527 584177  
**E** [thorlux@thorlux.co.uk](mailto:thorlux@thorlux.co.uk)  
**W** [www.thorlux.com](http://www.thorlux.com)

**Direct UK Sales Line: 01527 583222**

**Thorlux Lighting Ireland**  
Unit G6  
Riverview Business Park  
Nangor Road  
Gallanstown  
Dublin 12  
Ireland

**T** +353 (0)1 460 4608  
**F** +353 (0)1 460 4609  
**E** [thorlux@thorlux.ie](mailto:thorlux@thorlux.ie)  
**W** [www.thorlux.ie](http://www.thorlux.ie)

**Thorlux Lighting Deutschland**  
Ernst Gnoß Strasse 7  
40219 Düsseldorf  
Deutschland

**T** +49 (0)211 695 603-10  
**F** +49 (0)211 695 603-11  
**E** [thorlux@thorlux.de](mailto:thorlux@thorlux.de)  
**W** [www.thorlux.de](http://www.thorlux.de)

**Thorlux Lighting Australasia Pty Ltd.**  
31 Cross Street  
Brookvale  
Sydney  
NSW 2100  
Australia

**T** 1300 04 32 32  
**T** +61 (0)2 9907 1261  
**E** [thorlux@thorlux.com.au](mailto:thorlux@thorlux.com.au)  
**W** [www.thorlux.com.au](http://www.thorlux.com.au)

Registered No. ABN 139 400 507

**Thorlux Lighting LLC**  
Office 334  
European Business Centre  
Green Community  
Dubai Investment Park 1  
PO Box 33484  
Dubai  
United Arab Emirates

**T** +971 (0)2 656 5842  
**F** +971 (0)2 622 4149  
**E** [sales@thorlux.ae](mailto:sales@thorlux.ae)  
**W** [www.thorlux.ae](http://www.thorlux.ae)

