

ARCADIAN



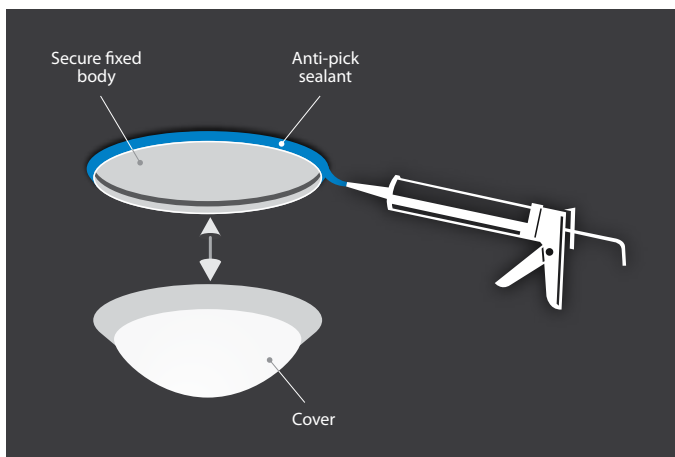
COLOUR OPTIONS

Supplied finished in RAL 9010 white as standard. Other colour options are available to special order*.

** Minimum order quantity applies*



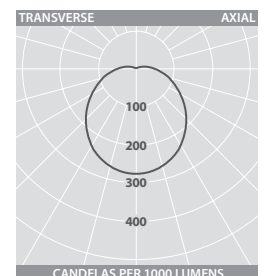
EASY COVER REMOVAL



MOUNTING OPTIONS



PHOTOMETRIC GUIDE



Luminaire Lumen Output
 21W 3000/4000K = 2670lm
 27W 3000/4000K = 3415lm



LED LIGATURE-RESISTANT LUMINAIRES



SPECIFICATION

- Strong spun steel body
- Injection moulded 5mm thick polycarbonate cover with white painted trim as standard (RAL 9010). Other colour trim options available to special order
- SmartScan emergency version with wireless test status reporting
- Ligature-resistant design
- Anti-pick sealant can be used to seal the body whilst still allowing the cover to be removed for maintenance
- Tamper-resistant pin Torx screw fixings (requires T25 tool - see accessory table)
- Microwave presence detector option with stand-by light level feature
- Fitted with 3000K or 4000K LEDs

LED CHARACTERISTICS

CRI	80
COLOUR TEMPERATURE	3000K/4000K
RATED LIFE (HOURS)	88K - L70/B10
PROTECTION	LUX GUARD
DRIVER EFFICIENCY	>85%
REPLACEABLE	YES
POWER FACTOR	>0.95

LL/CW **106.7**

For LED characteristics explanation see www.thorlux.com/led-guide

SmartScan Configurations



Find out more at www.thorlux.com/smartsan

RANGE

LED	CAT. No.	APPROX. kg	CIRCUIT
21W 3000K	AN 17074	3.1	L/A
21W 4000K	AN 17075	3.1	L/A
27W 3000K	AN 19208	3.1	L/A
27W 4000K	AN 19209	3.1	L/A

CIRCUIT TYPE - suffix catalogue number with:

L - non-dimming (LED) / **A** - dimming (DALI) e.g. **AN 17074L** etc.

EMERGENCY VERSION - prefix catalogue number with:

TAN - AutoTest / **WAN** - SmartScan e.g. **WAN 17074L** etc.

Add 0.3kg to weights listed.

INTEGRAL NIGHT LIGHT VERSION - suffix catalogue number with:

N e.g. **AN 17074LN** etc.

ACCESSORY

DESCRIPTION	CAT. No
T25 pin Torx bit (Suitable for magnetic bit holder)	KEY 16976

OPTION

DESCRIPTION	SUFFIX	EXAMPLE
Microwave presence detector (21W version only)	MD	AN 17074MD

DIMENSIONS

