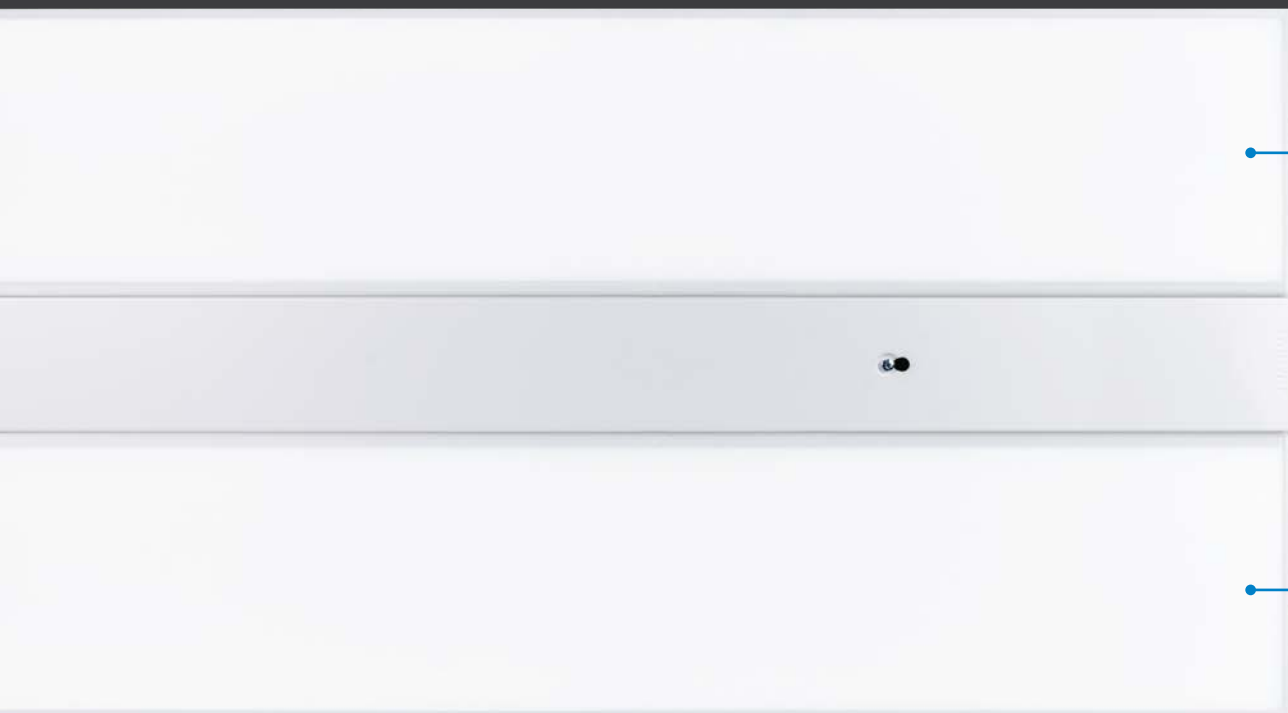


SOLOW XLED OPAL

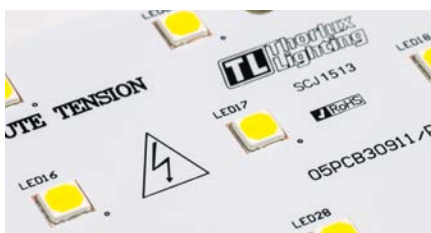


OPAL ACRYLIC DIFFUSER FOR UNIFORM ILLUMINATION



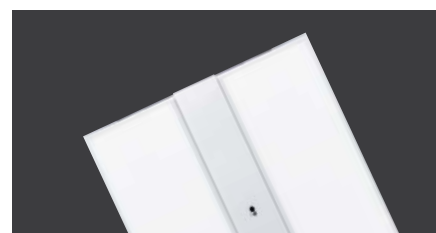
OPAL COVER FOR EVEN ILLUMINATION

Up to 660 evenly distributed medium power LEDs are mounted behind the opal acrylic cover creating a uniform lit appearance.



MEDIUM POWER UP TO 146 LUMINAIRE LUMENS PER CIRCUIT WATT

The high efficiency control gear coupled with the latest medium power LEDs produce between 124 and 146 luminaire lumens per circuit watt (including all gear losses). 4000K colour temperature as standard, other colours available to special order.



UP TO 33,450 LUMENS

The high output 215W version delivers 33,450 lumens making it an ideal choice for many high ceiling applications.



DUAL LINE
65W / 112W / 175W



QUAD LINE
190W / 215W

Luminaire lifetime is dependent on a combination of factors; keeping LED junction and solder temperatures low is important but component selection and specification such as control gear, batteries, cabling and connectors can be equally critical. The Solow XLED Opal has a large surface area which helps keep critical components cool.

Certain versions of the Solow XLED Opal are capable of operating in high ambient temperatures up to 65°C; see the table opposite for further information.

MAXIMUM AMBIENT OPERATING TEMPERATURES TO ACHIEVE 100,000 HOUR LIFE EXPECTANCY

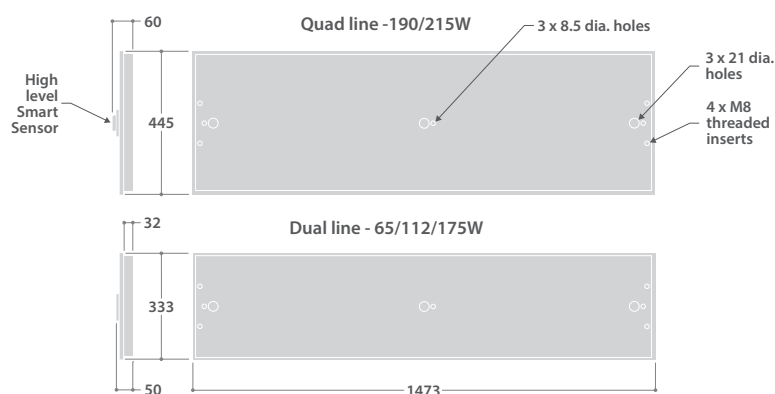
LED	STANDARD & SMART VERSIONS	EMERGENCY VERSIONS
65W	65°C	35°C
112W	45°C	25°C
175W	30°C	25°C
190W	50°C	30°C
215W	40°C	25°C

Minimum operating ambient temperature - Standard & Smart versions: -20°C / Emergency versions: 0°C

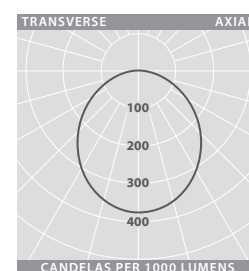
SOLOW XLED OPAL

Actual
size
50
MM

DIMENSIONS



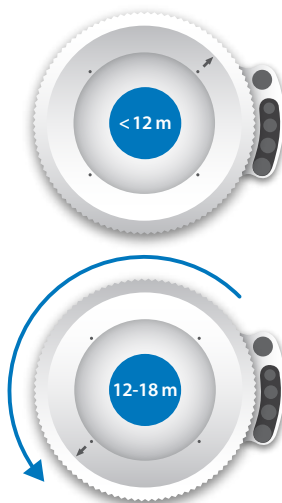
PHOTOMETRIC GUIDE



Luminaire Lumen Output:
65W = 9540lm
112W = 15950lm
175W = 23315lm
190W = 27920lm
215W = 33450lm



The high level Smart Sensor is optimised for mounting heights up to 18m. An adjustable lens allows for the detection area to be tuned to suit the application perfectly. The use of advanced Thorlux Smart technology ensures LEDs are only powered when required and when on are optimised to provide the correct light level and corresponding power demand. Settings can be configured from ground level using the Smart Programmer.





SLIM PROFILE SUPERIOR PERFORMANCE LED LUMINAIRES



SPECIFICATION

- Slim profile zinc plated steel body finished full polyester non-yellowing satin white (RAL 9016)
- Shallow design - unobtrusive
- Large illumination surface area, opal acrylic cover
- Up to 33,450 lumen output
- Up to 146 luminaire lumens per circuit watt
- Smart versions suitable for use at mounting heights up to 18m
- SmartScan wireless technology removes the need for control cabling. Ideal for retro-fit
- Can be suspended or surface mounted

LED CHARACTERISTICS

CRI	80+
COLOUR TEMPERATURE	4000K
RATED LIFE (HOURS)	100K - L70/B10
PROTECTION	LUX GUARD
DRIVER EFFICIENCY	>92%
REPLACEABLE	YES
POWER FACTOR	>0.95
LL/CW	146.1

For LED characteristics explanation see www.thorlux.com/led-characteristics

SmartScan Configurations



Find out more at www.thorlux.com/smartsan

RANGE

	NOMINAL SIZE (mm)	LED	CAT. No.	APPROX. kg	CIRCUIT
SMART	1500	65W	SWX 19050	11.4	D/SS
		112W	SWX 19051	11.4	D/SS
		175W	SWX 19052	11.4	D/SS
		190W	SWX 19053	15.2	D/SS
		215W	SWX 19054	15.2	D/SS
STANDARD	1500	65W	SWX 19055	11.2	L/A
		112W	SWX 19056	11.2	L/A
		175W	SWX 19057	11.2	L/A
		190W	SWX 19058	15.0	L/A
		215W	SWX 19059	15.0	L/A

CIRCUIT TYPE - suffix catalogue number with:

SMART D - Smart / SS - SmartScan

STANDARD L - non-dimming / A - dimming (DALI) e.g. SWX 19050SS etc.

EMERGENCY VERSION - prefix catalogue number with:

TSX - AutoTest / WSX - SmartScan* e.g. WSX 19050SS etc.

Add 0.3kg to weights listed.

* Can only be used with the 'SS' suffix

ACCESSORY

DESCRIPTION	CAT. No.
Chain / wire suspension kit (4 x M8 screw eyelets and 1 x cable gland)	IK 16897