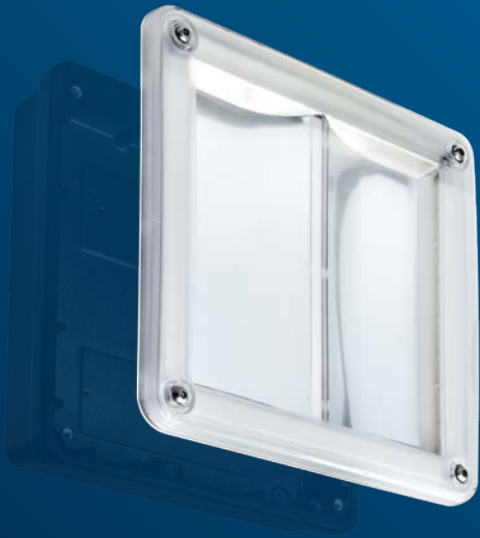


PRISMALETTE PRO



Pre-assembled retro-fit module complete with polycarbonate cover

RANGE

	LED	CAT. No.	APPROX. kg
WALL VERSION	12W	PS 17318L	1.2
CEILING VERSION	16W	PS 17319L	1.2

CIRCUIT TYPE - L - non-dimming

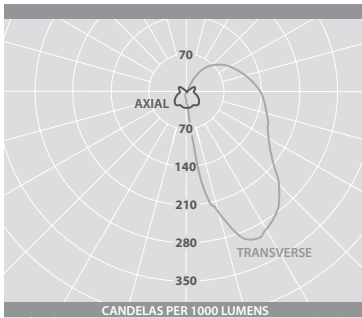
EMERGENCY VERSION - prefix catalogue number with:

EPS - Emergency / **TPS** - AutoTest / **DPS** - Scanlight AT (DALI) /

WPS - SmartScan e.g. **EPS 17318L** etc.

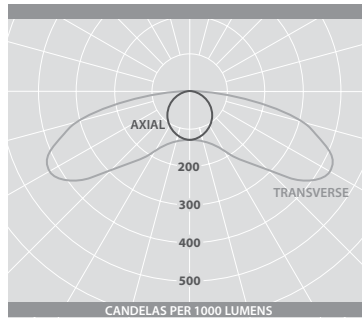
Add 0.3kg to weights listed

PHOTOMETRIC GUIDE



WALL MOUNTED VERSION

Luminaire Lumen Output:
12W = 1370lm



CEILING MOUNTED VERSION

Luminaire Lumen Output:
16W = 1815lm

ACCESSORIES

DESCRIPTION	CAT. No.
Bezel for semi-recessed mounting (<i>black finish</i>)	PS 11876B
Bezel for semi-recessed mounting (<i>white finish</i>)	PS 11876W
Key for tamper-resistant screws	KEY 7979

OPTIONS

DESCRIPTION	SUFFIX	EXAMPLE
Photocell ▲	PC	PS 17312LPC
Microwave presence detector	MD	PS 17313MD

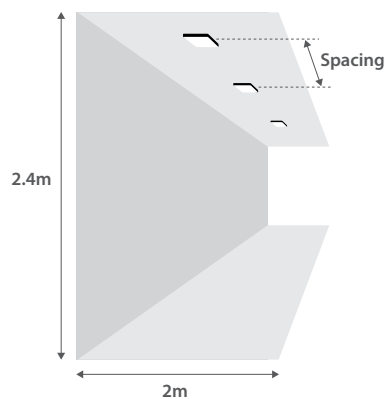
▲ Wall mounted version only

PERFORMANCE GUIDE

Photometric Performance -
16W LED ceiling mounted version

SPACING	AVERAGE ILLUMINANCE	UNIFORMITY (min/av)
2.4m mounting height -		
3m ctrs	94 lux	0.73
4m ctrs	79 lux	0.70
5m ctrs	67 lux	0.71
6m ctrs	57 lux	0.74
9m ctrs	39 lux	0.68
10m ctrs	36 lux	0.57
12m ctrs	30 lux	0.40
15m ctrs	24 lux	0.25

FIGURES ARE BASED ON INITIAL LUMENS



e.g. At 2.4m mounting height and 9m centres: 39 lux average horizontal illuminance at ground level

PRISMALETTE PRO



LED VANDAL-RESISTANT LUMINAIRES



SPECIFICATION

- Strong high pressure die-cast LM2 aluminium body. Textured black, full polyester powder finish as standard
- Long life silicone sponge gasket ensuring IP66 rating
- SmartScan wireless reporting versions
- White finish option
- 3mm flame retardant polycarbonate cover
- Tamper-resistant cover screws as standard
- Two distribution versions optimised for wall or ceiling mounting
- Microwave presence detector option with stand-by light level feature
- Bezel trim for semi-recessed mounting
- Fitted with 4000K LEDs

LED CHARACTERISTICS

Ra 80+	°K 4000	L70/B10 90K	LL/CW 95.5
P/U P	% >80	R/Rx R	

For LED characteristics explanation see www.thorlux.com/led-characteristics

RANGE

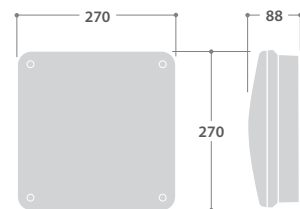
	LED	CAT. No.	APPROX. kg
WALL VERSION	12W	PS 17312L	2.7
CEILING VERSION	16W	PS 17313L	2.7

WHITE OPTION - add suffix **W** - White e.g. **PS 17312LW** etc.

CIRCUIT TYPE - **L** - non-dimming

EMERGENCY VERSION - prefix catalogue number with:
EPS - Emergency / **TPS** - AutoTest / **DPS** - Scanlight AT (DALI) / **WPS** - SmartScan e.g. **WPS 17312L** etc.
 Add 0.3kg to weights listed

DIMENSIONS



Fixing points: 4 x Spot faces on 205mm centres (drill as required) and 1 central BESA box fixing



Learn more about SmartScan at:
www.thorlux.com/smartsan

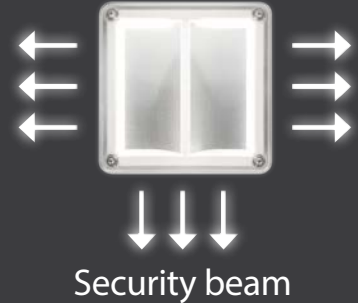


Wall mounted version

Security beam

The Prismalette PRO produces a security beam providing an illumination boost that is closer to the doorway than from a conventional luminaire. This improves facial recognition of doorstep callers, increasing the feeling of security for residents.

Higher illuminance provides safer entry and exit to the property.



Illumination boost at doorway

Increased vertical illumination

Easier identification of doorstep callers

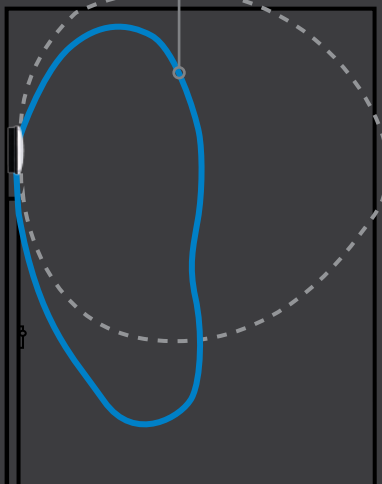
Limited forward throw

Reducing wasted and obtrusive light.

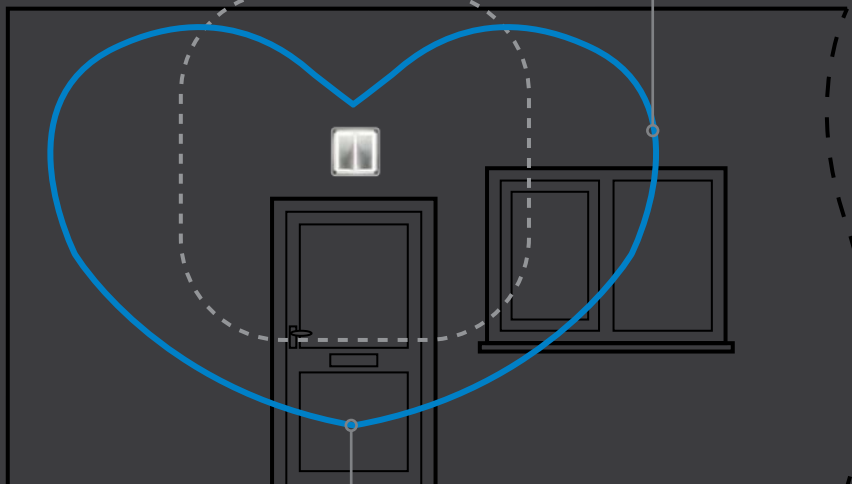
High angle wide distribution

Providing excellent vertical illumination for improved facial recognition.

End view



Side view



Prismalette PRO Conventional alternative

Security beam

Providing a punch of light directly below and in front of the luminaire. This is particularly useful when mounting near doorways.

Ceiling mounted version

Excellent vertical illumination

When ceiling mounted the light distribution of the Prismalette PRO provides excellent vertical illumination along corridors and walkways whilst also increasing the spacing of luminaires and improving uniformity. The high cut-off angle ensures more light is projected at head height so that residents can easily see and recognise the faces of others.



Uniform corridor illumination

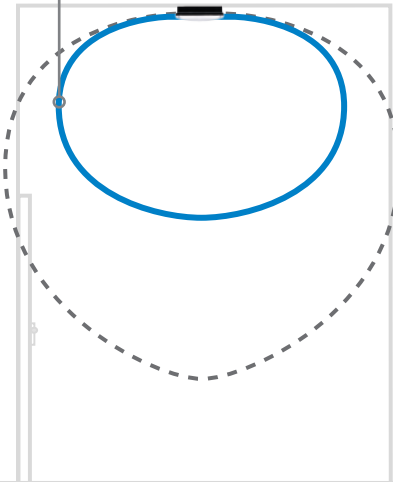
Wide spacings

Increased vertical illumination

Narrow distribution

Perfect for lighting corridors and walkways where wider uncontrolled distributions can cause obtrusive light.

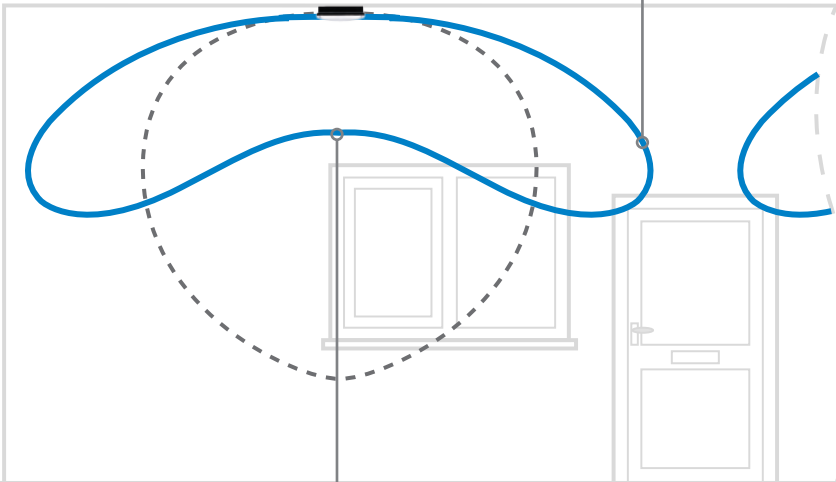
End view



Wide lateral distribution

Projects light along corridors and walkways, providing improved uniformity and allowing luminaires to be mounted further apart.

Side view



— Prismalette PRO - - - Conventional alternative

Reduced forward throw

Reduces bright spots directly below the luminaires.