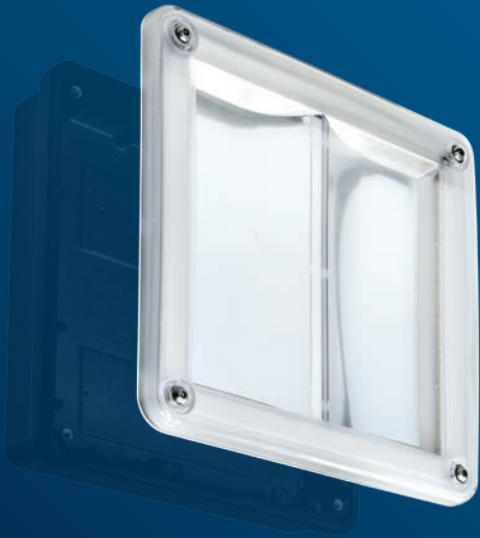


# PRISMALETTE PRO



Pre-assembled retro-fit module complete with polycarbonate cover

## RANGE

	LED	CAT. No.	APPROX. kg
WALL VERSION	12W	<b>PS 17318L</b>	1.2
CEILING VERSION	16W	<b>PS 17319L</b>	1.2

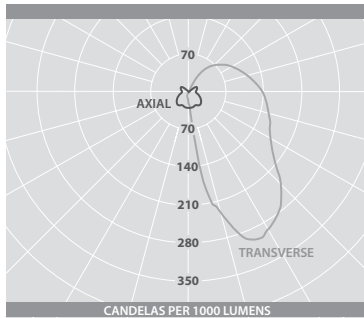
CIRCUIT TYPE - L - non-dimming

EMERGENCY VERSION - prefix catalogue number with:

**EPS** - Emergency / **TPS** - AutoTest / **DPS** - Scanlight AT (DALI) / **WPS** - SmartScan e.g. **EPS 17318L** etc.

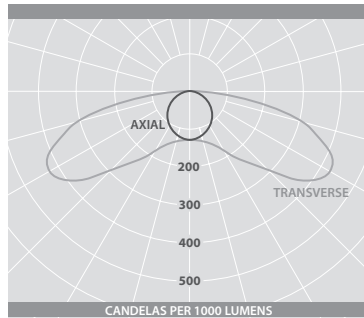
Add 0.3kg to weights listed

## PHOTOMETRIC GUIDE



### WALL MOUNTED VERSION

Luminaire Lumen Output:  
12W = 1370lm



### CEILING MOUNTED VERSION

Luminaire Lumen Output:  
16W = 1815lm

## ACCESSORIES

DESCRIPTION	CAT. No.
Bezel for semi-recessed mounting ( <i>black finish</i> )	<b>PS 11876B</b>
Bezel for semi-recessed mounting ( <i>white finish</i> )	<b>PS 11876W</b>
Key for tamper-resistant screws	<b>KEY 7979</b>
Adaptor for cornice mounting ( <i>black finish</i> )	<b>PS 18886B</b>
Adaptor for cornice mounting ( <i>white finish</i> )	<b>PS 18886W</b>

## OPTIONS

DESCRIPTION	SUFFIX	EXAMPLE
Photocell ▲◆	<b>PC</b>	<b>PS 17312LPC</b>
Microwave presence detector	<b>MD</b>	<b>PS 17313MD</b>

▲ Wall mounted version only

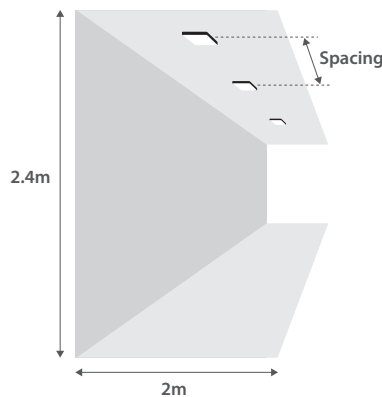
◆ Not suitable for semi-recessed or cornice mounting

## PERFORMANCE GUIDE

Photometric Performance -  
16W LED ceiling mounted version

SPACING	AVERAGE ILLUMINANCE	UNIFORMITY (min/av)
<b>2.4m mounting height -</b>		
3m ctrs	94 lux	0.73
4m ctrs	79 lux	0.70
5m ctrs	67 lux	0.71
6m ctrs	57 lux	0.74
9m ctrs	39 lux	0.68
10m ctrs	36 lux	0.57
12m ctrs	30 lux	0.40
15m ctrs	24 lux	0.25

FIGURES ARE BASED ON INITIAL LUMENS



e.g. At 2.4m mounting height and 9m centres: 39 lux average horizontal illuminance at ground level

Cornice mounting



# PRISMALETTE PRO



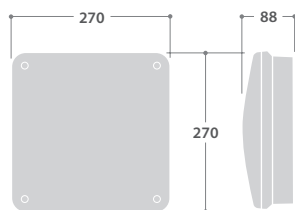
## LED VANDAL-RESISTANT LUMINAIRES



### SPECIFICATION

- Strong high pressure die-cast LM2 aluminium body. Textured black, full polyester powder finish as standard
- Long life silicone sponge gasket ensuring IP66 rating
- SmartScan wireless reporting versions
- White finish option
- 3mm flame retardant polycarbonate cover
- Tamper-resistant cover screws as standard
- Two distribution versions optimised for wall or ceiling mounting
- Microwave presence detector option with stand-by light level feature
- Bezel trim for semi-recessed mounting
- Fitted with 4000K LEDs

### DIMENSIONS



Fixing points: 4 x Spot faces on 205mm centres (drill as required) and 1 central BESA box fixing

### RANGE

	LED	CAT. No.	APPROX. kg
WALL VERSION	12W	PS 17312L	2.7
CEILING VERSION	16W	PS 17313L	2.7

WHITE OPTION - add suffix **W** - White e.g. **PS 17312LW** etc.

CIRCUIT TYPE - **L** - non-dimming

EMERGENCY VERSION - prefix catalogue number with:

**EPS** - Emergency / **TPS** - AutoTest / **DPS** - Scanlight AT (DALI) / **WPS** - SmartScan e.g. **WPS 17312L** etc.

Add 0.3kg to weights listed

### LED CHARACTERISTICS

CRI	80+
COLOUR TEMPERATURE	4000K
RATED LIFE (HOURS)	88K - L70/B10
PROTECTION	LUX GUARD
DRIVER EFFICIENCY	>80%
REPLACEABLE	YES
POWER FACTOR	>0.95

LL/CW **95.5**

For LED characteristics explanation see [www.thorlux.com/led-characteristics](http://www.thorlux.com/led-characteristics)



Learn more about SmartScan at:  
[www.thorlux.com/smartsan](http://www.thorlux.com/smartsan)

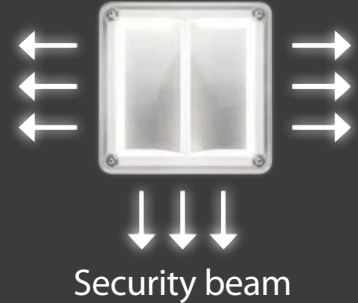


## Wall mounted version

### Security beam

The Prismalette PRO produces a security beam providing an illumination boost that is closer to the doorway than from a conventional luminaire. This improves facial recognition of doorstep callers, increasing the feeling of security for residents.

Higher illuminance provides safer entry and exit to the property.



Illumination boost at doorway

Increased vertical illumination

Easier identification of doorstep callers

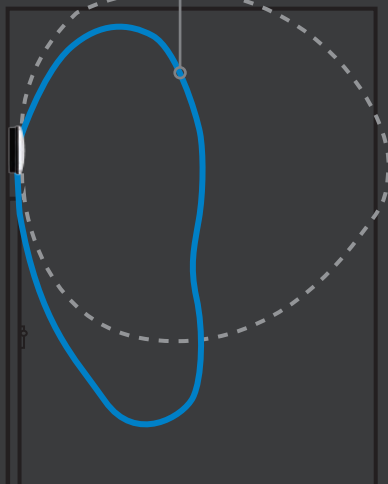
### Limited forward throw

Reducing wasted and obtrusive light.

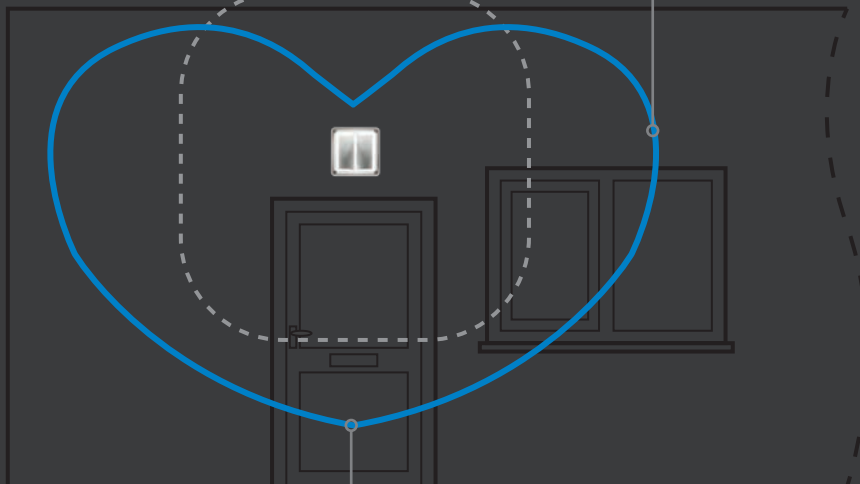
### High angle wide distribution

Providing excellent vertical illumination for improved facial recognition.

End view



Side view



Prismalette PRO Conventional alternative

### Security beam

Providing a punch of light directly below and in front of the luminaire. This is particularly useful when mounting near doorways.

# Ceiling mounted version

## Excellent vertical illumination

When ceiling mounted the light distribution of the Prismalette PRO provides excellent vertical illumination along corridors and walkways whilst also increasing the spacing of luminaires and improving uniformity. The high cut-off angle ensures more light is projected at head height so that residents can easily see and recognise the faces of others.



Uniform corridor illumination

Wide spacings

Increased vertical illumination

### Narrow distribution

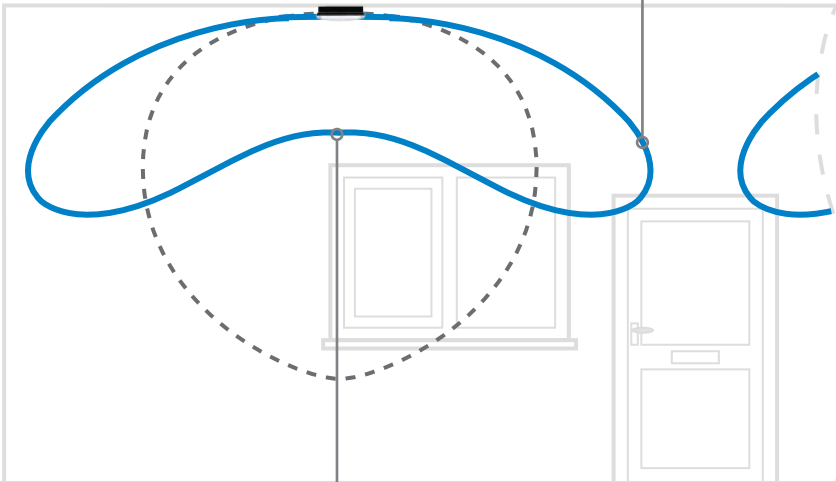
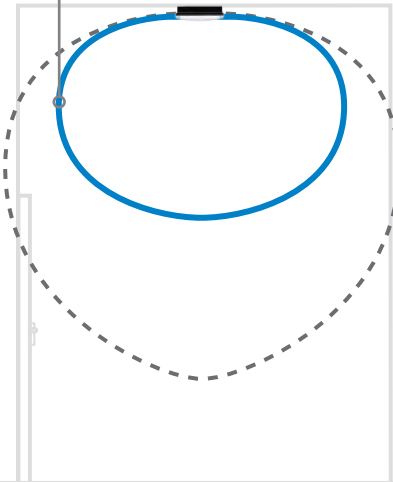
Perfect for lighting corridors and walkways where wider uncontrolled distributions can cause obtrusive light.

### Wide lateral distribution

Projects light along corridors and walkways, providing improved uniformity and allowing luminaires to be mounted further apart.

End view

Side view



— Prismalette PRO    - - - Conventional alternative

### Reduced forward throw

Reduces bright spots directly below the luminaires.