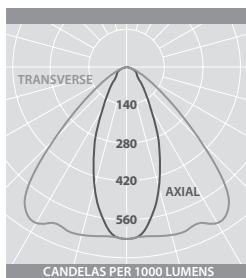


# G4 SURFACE

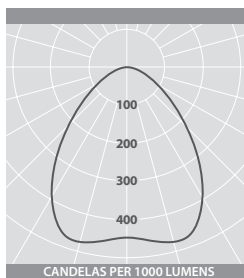


## PHOTOMETRIC GUIDE



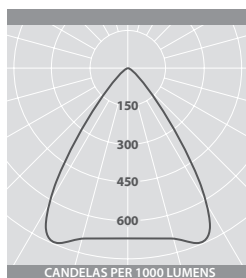
### CORRIDOR

Luminaire Lumen Output  
16W = 1305lm  
32W = 2570lm



### GENERAL AREA

Luminaire Lumen Output  
16W = 1425lm  
32W = 2780lm



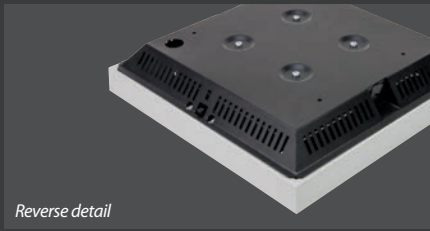
### LOW GLARE LENS

Luminaire Lumen Output  
16W = 795lm  
32W = 1560lm

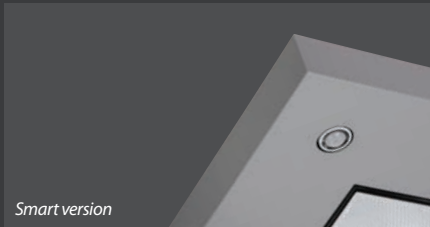
## PERFORMANCE GUIDE

Typical task area illuminance assuming an open area with good reflection factors, 0.85 maintenance factor and a 2.65 metre ceiling height.

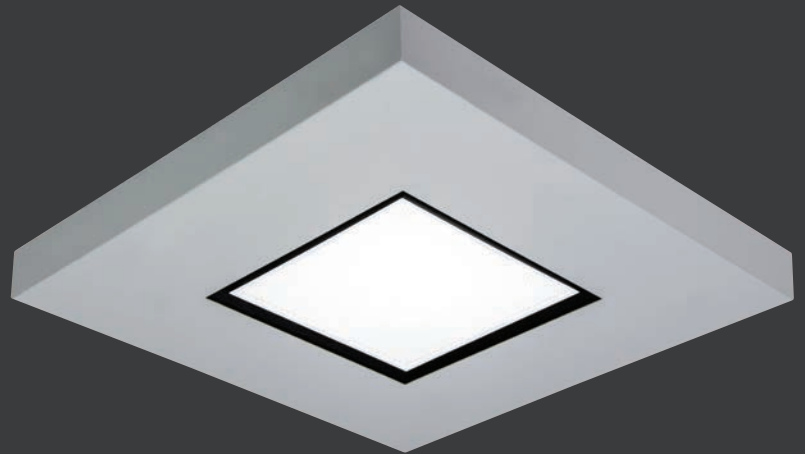
	LED	SPACING (Metres)	LUX AVERAGE 70/50/20	LUX AVERAGE 80/60/30
CORRIDOR	16W	5.4	75	90
		4.2	100	110
	32W	5.4	150	170
		4.2	195	220
GENERAL AREA	16W	3.0 x 3.0	160	180
		2.4 x 3.0	190	215
		2.4 x 2.4	240	260
		1.8 x 2.4	305	340
	32W	3.0 x 3.0	305	340
		2.4 x 3.0	370	420
		2.4 x 2.4	450	510
		1.8 x 2.4	600	680
LOW GLARE LENS	16W	3.0 x 3.0	95	105
		2.4 x 3.0	115	130
		2.4 x 2.4	140	150
		1.8 x 2.4	170	190
	32W	3.0 x 3.0	180	200
		2.4 x 3.0	210	245
		2.4 x 2.4	265	295
		1.8 x 2.4	340	370



Reverse detail



Smart version



## SQUARE LED SURFACE DOWNLIGHTERS



### SPECIFICATION

- Steel body finished black
- Steel bezel finished light textured silver (RAL 9006)
- Die-cast heat sink with through airflow for thermal management
- Injection moulded reflector
- Choice of optics optimised for general area, corridor and low glare (VDT)
- Smart versions with integral intelligent lighting control
- Optional SmartScan wireless technology removes the need for control cabling. Ideal for retro-fit.
- Emergency, AutoTest and Scanlight AT versions using integral, high power 1.5W LED
- 16W and 32W very high efficiency versions
- Integral LED driver
- Fitted with 4000K LEDs

### LED CHARACTERISTICS

CRI	80+
COLOUR TEMPERATURE	4000K
RATED LIFE (HOURS)	100K - L90/B10
PROTECTION	LED PROTECT
DRIVER EFFICIENCY	>85%
REPLACEABLE	YES
POWER FACTOR	>0.9

LL/CW **79.2**

For LED characteristics explanation see [www.thorlux.com/led-characteristics](http://www.thorlux.com/led-characteristics)

### RANGE

	LED	CORRIDOR VERSION	GENERAL AREA VERSION	LOW GLARE VERSION	APPROX. kg	CIRCUIT
<b>SMART</b>	32W	<b>GF 15737</b>	<b>GF 15736</b>	<b>GF 15738</b>	2.8	D/SS
<b>STANDARD</b>	16W	<b>GF 15728</b>	<b>GF 15727</b>	<b>GF 15729</b>	2.7	L/A
	32W	<b>GF 15725</b>	<b>GF 15724</b>	<b>GF 15726</b>	2.7	L/A

**CIRCUIT TYPE** - suffix catalogue number with:

**SMART** D - Smart / SS - SmartScan

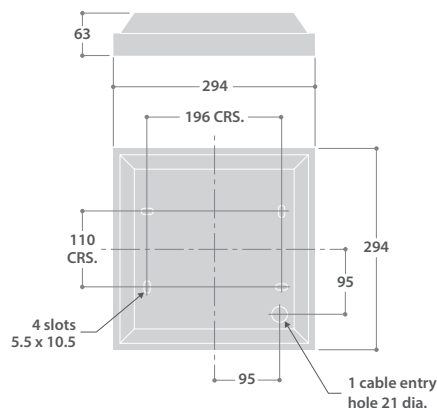
**STANDARD** L - non-dimming (LED) / A - dimming (DALI) e.g. **GF 15737SS** etc.

**EMERGENCY VERSION** - prefix catalogue number with:

**EGF** - Emergency / **TGF** - AutoTest / **DGF** - Scanlight AT (DALI) e.g. **EGF 15737D** etc.

Add 0.3kg to weights listed.

### DIMENSIONS



Learn more about  
SmartScan at:  
[www.thorlux.com/smartscan](http://www.thorlux.com/smartscan)