

G3 LED



ACTUAL SIZE



## CIRCULAR LED RECESSED DOWNLIGHTERS

IP20 ABOVE CEILING IP40 BELOW CEILING

IP65 BELOW CEILING (IP65 version only) CE LED



### SPECIFICATION

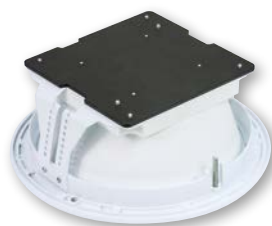
- High pressure die-cast ring finished full polyester, non-yellowing white
- Aluminium heat sink
- Injection moulded reflector finished white
- Toughened/safety drop glass attachments provide a measure of light on the ceiling
- Optional reinforcing board with centre cut aperture
- Smart versions with intelligent lighting control
- Optional SmartScan wireless technology removes the need for control cabling. Ideal for retro-fit.
- Emergency, AutoTest and Scanlight AT versions
- Supplied with remote gear unit fitted with 2m lead
- Smart/SmartScan versions fitted with TEE connector for LCM wiring
- CRI 90 option available to special order
- Fitted with 3000K/4000K LEDs



### LED CHARACTERISTICS

Ra	°K	L80/B10	LL/CW 106.0
80+	3000/ 4000	60K	
P/U	%	R/Rx	PF
P	>85	R	>0.9

For LED characteristics explanation see [www.thorlux.com/led-characteristics](http://www.thorlux.com/led-characteristics)



Body and heat sink



Remote Smart Sensor

1 LED Downlighter Power Unit for Smart, Emergency, AutoTest and Scanlight AT versions.

2 Remote Driver for standard versions

# G3 LED



		LED	3000K VERSION	4000K VERSION	APPROX. kg	CIRCUIT
OPEN	SMART	16W	GT 18385	GT 15072	1.5	D/SS
		21W	GT 18386	GT 18370	1.5	D/SS
	STANDARD	8W	GT 18387	GT 15070	0.8	L/A
		16W	GT 18388	GT 15071	0.8	L/A
		21W	GT 18389	GT 18371	0.8	L/A
	FROSTED OUTER DROP GLASS	SMART	16W	GT 18390	GT 15075	1.9
21W			GT 18391	GT 18372	1.9	D/SS
STANDARD		8W	GT 18392	GT 15073	1.2	L/A
		16W	GT 18393	GT 15074	1.2	L/A
		21W	GT 18394	GT 18373	1.2	L/A
FROSTED INNER DROP GLASS		SMART	16W	GT 18395	GT 15078	2.0
	21W		GT 18396	GT 18374	2.0	D/SS
	STANDARD	8W	GT 18397	GT 15076	1.3	L/A
		16W	GT 18398	GT 15077	1.3	L/A
		21W	GT 18399	GT 18375	1.3	L/A
	LIGHT GREEN TINTED HALO	SMART	16W	GT 18400	GT 15081	1.6
21W			GT 18401	GT 18376	1.6	D/SS
STANDARD		8W	GT 18402	GT 15079	0.9	L/A
		16W	GT 18403	GT 15080	0.9	L/A
		21W	GT 18404	GT 18377	0.9	L/A
IK10 POLYCARBONATE		STANDARD	8W	GT 18405	GT 15082	1.0
	16W		GT 18406	GT 15083	1.0	L/A
	21W		GT 18407	GT 18378	1.0	L/A
IP65 GLASS OR IK10 POLYCARBONATE	STANDARD	Clear glass versions				
		8W	GT 18411	GT 15085	1.2	L/A
		16W	GT 18412	GT 15086	1.2	L/A
		21W	GT 18413	GT 18382	1.2	L/A
		Frosted glass versions				
		8W	GT 18414	GT 15088	1.2	L/A
		16W	GT 18415	GT 15089	1.2	L/A
		21W	GT 18416	GT 18383	1.2	L/A
		Clear polycarbonate versions				
		8W	GT 18417	GT 15091	1.2	L/A
		16W	GT 18418	GT 15092	1.2	L/A
		21W	GT 18419	GT 18384	1.2	L/A

CIRCUIT TYPE - suffix catalogue number with:

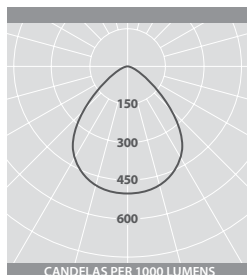
SMART D - Smart / SS - SmartScan  
STANDARD L - non-dimming (LED) / A - dimming (DALI) e.g. GT 18385SS etc.

EMERGENCY VERSION - prefix catalogue number with:

EGT - Emergency / TGT - AutoTest / DGT - Scanlight AT (DALI) e.g. EGT 18385SS etc.

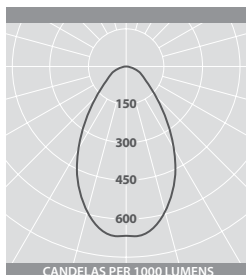
Add 0.9kg to weights listed or add 0.3kg for Smart versions.

## PHOTOMETRIC GUIDE



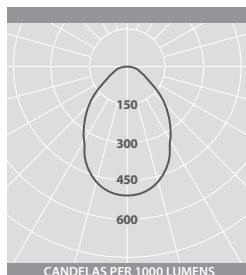
### OPEN

LED	3000K (lm)	4000K (lm)
8W	995	1060
16W	1840	1955
21W	2345	2495



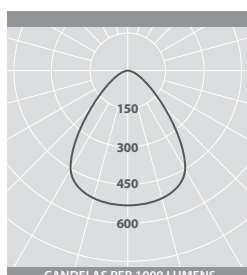
### FROSTED OUTER

LED	3000K (lm)	4000K (lm)
8W	860	915
16W	1585	1685
21W	2020	2150



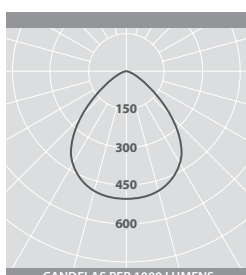
### FROSTED INNER

LED	3000K (lm)	4000K (lm)
8W	825	875
16W	1520	1615
21W	1935	2060



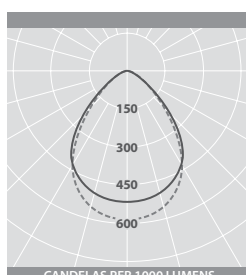
### HALO

LED	3000K (lm)	4000K (lm)
8W	955	1015
16W	1690	1800
21W	2155	2295



### IK10

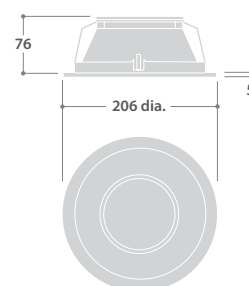
LED	3000K (lm)	4000K (lm)
8W	900	955
16W	1655	1760
21W	2110	2245



### IP65

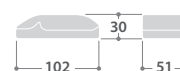
LED	3000K (lm)	4000K (lm)
8W Clear Glass	915	975
16W Clear Glass	1690	1800
21W Clear Glass	2155	2295
8W Polycarbonate	875	930
16W Polycarbonate	1610	1715
21W Polycarbonate	2055	2185
8W Frosted Glass	805	860
16W Frosted Glass	1490	1585
21W Frosted Glass	1900	2020

## DIMENSIONS



Cut-out - 180 dia.  
Minimum void depth - 110

### Standard Remote Driver



### LED Downlighter Power Unit



## ACCESSORIES

DESCRIPTION	CAT. No.	APPROX. kg
Retro-fit fixing kit <i>(for fitting drop glass attachments only to undrilled bezels)</i>	<b>GT 11643</b>	0.01
Matt chrome cone head screw - 3 off <i>(for drop glass versions)</i>	<b>GT 11866</b>	0.02
Matt chrome slotted head screw - 3 off <i>(for drop glass versions)</i>	<b>GT 11867</b>	0.02
Matt chrome knurled head screw - 3 off <i>(for drop glass versions)</i>	<b>GT 11868</b>	0.02
597 x 597mm ceiling reinforcing board <i>(3mm thick plywood with 185mm diameter central cut-out)</i>	<b>GT 11970</b>	0.55



Cone Head



Slotted Head



Knurled Head

### WEB LINK >

"PLUG AND PLAY"  
LIGHTING CABLE  
MANAGEMENT



Learn more about SmartScan at:  
[www.thorlux.com/smartsan](http://www.thorlux.com/smartsan)