

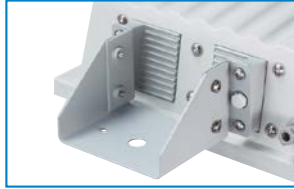
# STARGUARD



## MOUNTING BRACKETS - Lamp version



Wall mounting bracket



Pole top mounting bracket

## MOUNTING BRACKET - LED version

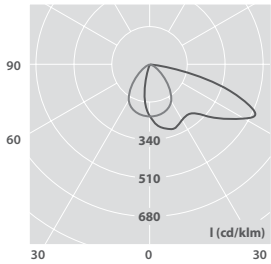


Universal mounting bracket -  
Wall position

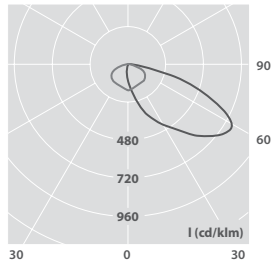


Universal mounting bracket -  
Pole top position

## PHOTOMETRIC GUIDE

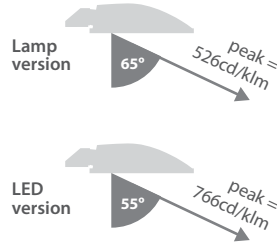


250W SON-T / 28000lm /  
8m mounting height



140W LED  
8m mounting height

Luminaire Lumen Output:  
62W = 6555lm  
140W = 14745lm



## OPTIONS

| DESCRIPTION | SUFFIX | EXAMPLE     |
|-------------|--------|-------------|
| Photocell   | PC     | STG 10912PC |



LED Version

Lamp Version

## ZERO UPWARD LIGHT, AREA AND ROADWAY LUMINAIRES

IP65 CE TC-T SON-T MBI-T LED

WINDAGE - 0.10m<sup>2</sup>

### SPECIFICATION

- Corrosion-resistant and fire-retardant GRP moulded body - light grey finish
- Clear toughened/safety glass cover
- Aluminium heat sink ensures cool running of control gear and LEDs for optimum life in high ambient temperatures
- ZERO upward light pollution
- High elevation peak beam angle for outstanding area coverage relative to mounting height
- High beam efficiency with low glare
- Pole top or wall mounted versions (LED version features a universal mounting bracket)
- Photocell option
- Fitted with lamp or 5700K LEDs

### LED CHARACTERISTICS

|           |            |                |                      |
|-----------|------------|----------------|----------------------|
| Ra<br>70+ | °K<br>5700 | L70/B10<br>90K | LL/CW<br><b>98.3</b> |
| P/U<br>P  | %<br>>90   | R/Rx<br>R      |                      |

For LED characteristics explanation see [www.thorlux.com/led-characteristics](http://www.thorlux.com/led-characteristics)

### LED RANGE

| LED    | CAT. No.          | APPROX. kg |
|--------|-------------------|------------|
| 62W ■  | <b>STG 16354L</b> | 11.8       |
| 140W ■ | <b>STG 16355L</b> | 11.8       |

### LAMP RANGE

| LAMP  | WALL MOUNTED VERSION | APPROX. kg | POLE TOP VERSION  | APPROX. kg |
|---|----------------------|------------|-------------------|------------|
| <b>High pressure sodium lamps</b>   |                      |            |                   |            |
| 150W SON-T  | <b>STG 10912</b>     | 10.3       | <b>STG 11000</b>  | 10.5       |
| 250W SON-T  | <b>STG 10913</b>     | 10.8       | <b>STG 11001</b>  | 11.0       |
| <b>Metal halide lamps - compatible with high pressure sodium control gear</b> |                      |            |                   |            |
| 150W MBI-T ▲  | <b>STG 10909</b>     | 10.3       | <b>STG 10997</b>  | 10.5       |
| 250W MBI-T ▲  | <b>STG 10910</b>     | 10.8       | <b>STG 10998</b>  | 11.0       |
| <b>Compact fluorescent lamps</b>  |                      |            |                   |            |
| 42W TC-T ●  | <b>STG 13428J</b>    | 7.1        | <b>STG 13426J</b> | 7.3        |
| 57W TC-T ●  | <b>STG 13429J</b>    | 7.1        | <b>STG 13427J</b> | 7.3        |

CIRCUIT TYPE - J - non-dimming (HF fluorescent) / L - non-dimming (LED)

IMPORTANT: DO NOT USE LAMPS WITH AN INTERNAL STARTING DEVICE

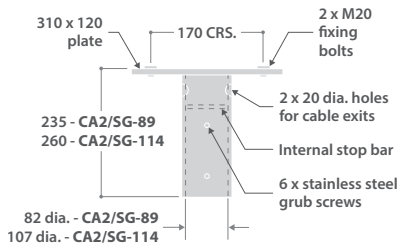
NOTE: Pole top versions - Mounting pots or crossarms are required for this luminaire and must be ordered separately

- ▲ Venture Whitelux 4000K fitted
- 4000K lamp fitted
- Universal mounting bracket suitable for wall or pole mounting

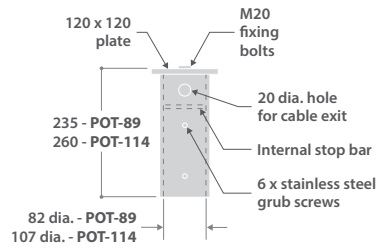
# STARGUARD

## COLUMN ACCESSORIES

**Twin Back to Back Floodlight Mounting Crossarm (for Starguard only) CA2/SG versions**



**Single Floodlight Mounting Pot**



**POT-89 or CA2/SG-89** - fits over 76 dia. shaft 4, 5 and 6m columns

**POT-114 or CA2/SG-114** - fits over 101 dia. spigot insert on 8 and 10m columns

## DIMENSIONS

